

UNITED STATES DEPARTMENT OF AGRICULTURE

Agricultural Marketing Service

Dairy Programs

FEDERAL MILK ORDERS 124 & 131

1930-220th Street SE, Ste. 102
Bothell, WA 98021
Phone: (425) 487-6009
Fax: (425) 487-2775
Email: fmmaseattle@fmmaseattle.com

4835 E. Cactus Road, Ste. 365
Scottsdale, AZ 85254
Phone: (602) 547-2909
Fax: (602) 547-2906

**OVERVIEW OF COMPONENT TESTS OF PRODUCER MILK
AT THE FARM LEVEL**

**PACIFIC NORTHWEST AND ARIZONA
FEDERAL MILK MARKETING ORDERS**

2013

January 2016

The U.S. Department of Agriculture (USDA) prohibits discrimination in all its programs and activities on the basis of race, color, national origin, age, disability, and where applicable, sex, marital status, familial status, parental status, religion, sexual orientation, genetic information, political beliefs, reprisal, or because all or part of an individual's income is derived from any public assistance program. (Not all prohibited bases apply to all programs.) Persons with disabilities who require alternative means for communication of program information (Braille, large print, audiotape, etc.) should contact USDA's TARGET Center at (202) 720-2600 (voice and TDD). To file a complaint of discrimination, write to USDA, Director, Office of Civil Rights, 1400 Independence Avenue, S.W., Washington, D.C. 20250-9410, or call (800) 795-3272 (voice) or (202) 720-6382 (TDD). USDA is an equal opportunity provider and employer.

OVERVIEW OF COMPONENT TESTS OF PRODUCER MILK AT THE FARM LEVEL

PACIFIC NORTHWEST AND ARIZONA FEDERAL MILK MARKETING ORDERS

2013

The following tables provide an overview of component tests of producer milk pooled on the Pacific Northwest (FO 124) and Arizona (FO 131) Federal Milk Marketing Orders. The tables summarize average tests by order, month, year, region, and size-range of production. Producer milk values are also calculated using Federal order minimum producer prices for the respective orders at 3.5% butterfat and at test. All test and value averages are weighted averages unless otherwise noted.

The farm level data included in these tables comprises all producers and producer milk pooled on the Pacific Northwest and Arizona Orders. The data was collected from producer payrolls submitted by handlers to the market administrator's office. Components available for the Pacific Northwest Order are butterfat, protein, and other solids. Other solids are lactose and minerals. The component for the Arizona Order is butterfat. In certain months, milk production that historically qualified to be pooled on an order may not have been pooled due to price relationships. This historically eligible producer milk is **not** included in this analysis. Large changes in producer numbers and producer milk typically indicate those months when milk was not pooled due to price relationships. Small differences may be evident between published pool information and the data shown in this overview due to the use of partially audited payroll data.

The orders' milksheds were divided into different regions when possible. The Pacific Northwest Order's milkshed was divided into four regions representing each of Oregon and Washington divided by the Cascade Mountain Range. In Oregon and Washington, the west side of the Cascade Mountain Range has more precipitation and is characterized by a milder climate than the eastern side of the states. The region east of the Cascade Mountain Range has a drier climate with warmer summers and colder winters. Arizona is very dry year round with little precipitation and relatively high temperatures where most milk is produced. Data from a small number of counties of other states are included in the data for the defined regions based on order association, relative proximity, and/or to prevent the release of restricted data.

The regions are:

- Western Washington
- Eastern Washington
- Western Oregon (& Idaho, Utah, and Northern California)
- Eastern Oregon
- Arizona (& Southern California and Texas)

An index of Tables grouped by Federal order can be found on page ii.

Index of Tables

Page
Number

Pacific Northwest Order (FO 124)

Tables:	T-1	Number of Producers, Producer Milk, Component Tests and Standard Deviations	1
	T-2	Number of Producers, Producer Milk and Component Tests by Region: 2013	2
	T-3a	Butterfat Tests by Region: 2013	3
	T-3b	Protein Tests by Region: 2013	4
	T-3c	Other Solids Tests by Region: 2013	5
	T-4	Component Tests by Size-Range of Producer Milk Deliveries: 2013	6
	T-5	Producer Prices and Component Tests by Month: 2013	7
	T-6	Producer Milk and Value by Size-Range of Producer Milk Deliveries: 2013	8
	T-7a	Long Term Trends in Component Tests, Butterfat: 2004-2013	9
	T-7b	Long Term Trends in Component Tests, Protein: 2004-2013	10
	T-7c	Long Term Trends in Component Tests, Other Solids: 2004-2013	11

Arizona Order (FO 131)

T-8	Number of Producers, Producer Milk, Component Tests and Standard Deviations	12
T-9	Component Tests by Size-Range of Producer Milk Deliveries: 2013	13
T-10	Producer Prices and Component Tests by Month: 2013	14
T-11	Producer Milk and Value by Size-Range of Producer Milk Deliveries: 2013	15
T-12	Long Term Trends in Component Tests, Butterfat: 2004-2013	16

Table T-1

Number of Producers, Producer Milk, Component Tests and Standard Deviations: 2013

Pacific Northwest Order								
Month	No. of Producers	Producer Milk	Butterfat		Protein		Other Solids	
			Test	Standard Deviation	Test	Standard Deviation	Test	Standard Deviation
January	603	698,644,520	4.00	0.45	3.28	0.24	5.73	0.09
February	596	645,153,484	3.92	0.42	3.23	0.22	5.74	0.08
March	598	727,016,879	3.92	0.41	3.22	0.21	5.74	0.08
April	595	718,982,651	3.85	0.40	3.20	0.20	5.74	0.07
May	596	749,221,691	3.77	0.40	3.15	0.21	5.77	0.07
June	594	724,479,730	3.76	0.39	3.13	0.21	5.75	0.07
July	595	732,414,684	3.72	0.40	3.09	0.21	5.77	0.07
August	483	645,263,630	3.74	0.42	3.12	0.22	5.74	0.08
September	482	601,681,533	3.82	0.45	3.19	0.23	5.72	0.08
October	492	624,487,484	3.98	0.49	3.33	0.24	5.71	0.09
November	592	671,439,912	4.03	0.49	3.35	0.25	5.69	0.10
December	587	698,006,194	4.08	0.50	3.35	0.25	5.70	0.10
Average/Total	568	8,236,792,392	3.88	0.44	3.22	0.22	5.73	0.08

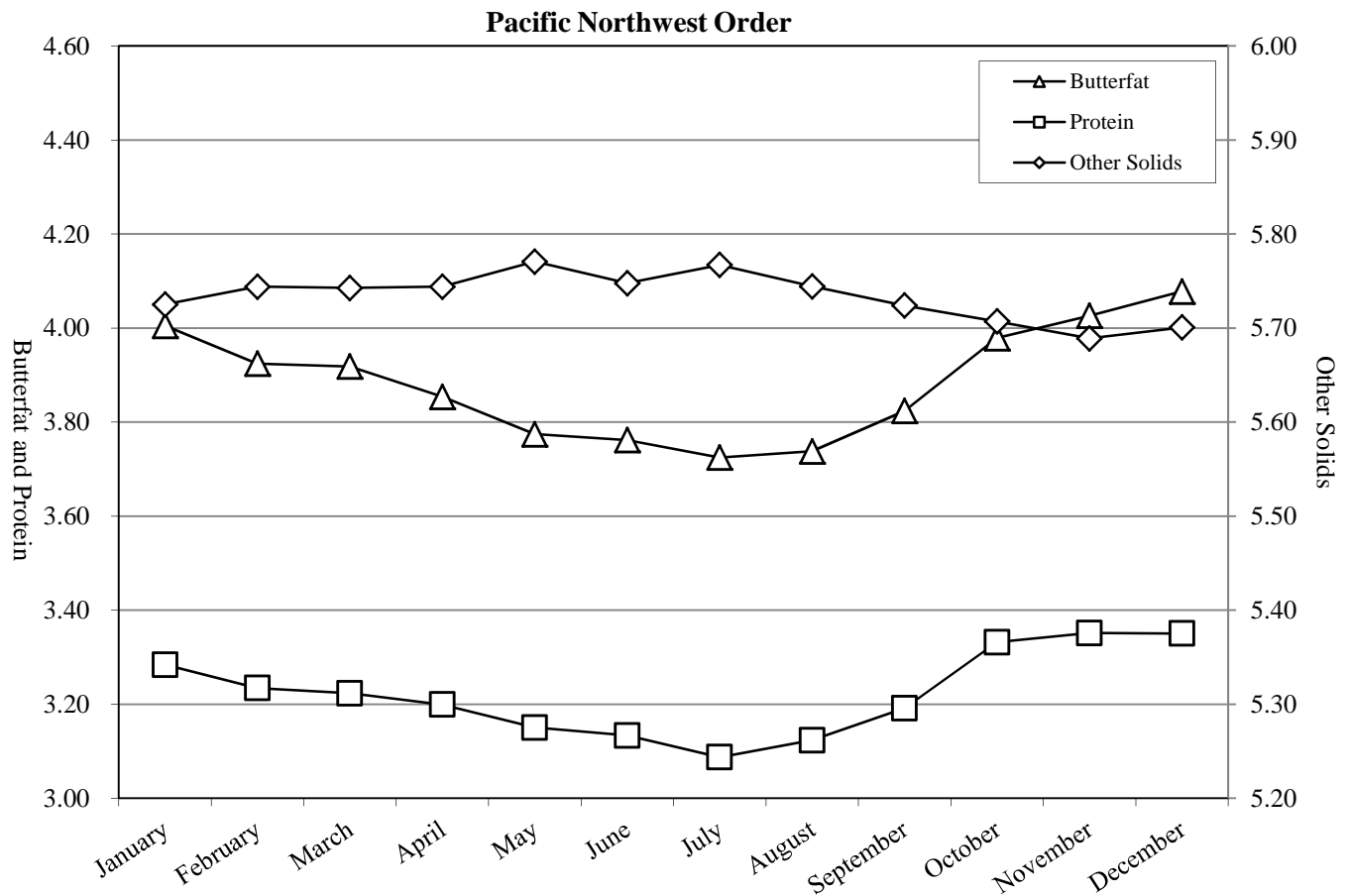


Table T-2**Number of Producers, Producer Milk and Component Tests by Region: 2013****Pacific Northwest Order**

Month	Western Washington					Eastern Washington				
	No. of Producers	Producer Milk	Butterfat	Protein	OS	No. of Producers	Producer Milk	Butterfat	Protein	OS
January	260	175,720,341	3.97	3.21	5.71	132	336,761,143	3.93	3.26	5.72
February	258	161,348,175	3.90	3.16	5.73	130	311,012,789	3.83	3.20	5.74
March	257	179,812,972	3.92	3.16	5.73	131	350,920,740	3.81	3.19	5.74
April	255	175,789,301	3.87	3.15	5.73	130	349,861,497	3.73	3.16	5.75
May	255	182,970,407	3.80	3.11	5.74	131	363,926,985	3.63	3.09	5.78
June	256	175,332,102	3.79	3.09	5.72	128	353,132,598	3.62	3.07	5.76
July	256	177,445,184	3.78	3.07	5.75	129	357,651,059	3.60	3.01	5.78
August	146	87,473,084	3.72	3.07	5.73	129	361,502,752	3.61	3.05	5.75
September	143	77,250,928	3.78	3.12	5.71	129	339,005,861	3.71	3.13	5.73
October	151	88,943,809	3.91	3.24	5.69	129	346,127,550	3.86	3.28	5.71
November	253	162,454,468	4.01	3.27	5.68	129	327,029,315	3.92	3.32	5.69
December	252	171,151,427	4.01	3.26	5.70	129	337,777,302	3.99	3.32	5.70
Average/Total	229	1,815,692,198	3.88	3.16	5.72	130	4,134,709,591	3.77	3.17	5.74

Month	Western Oregon 1/					Eastern Oregon				
	No. of Producers	Producer Milk	Butterfat	Protein	OS	No. of Producers	Producer Milk	Butterfat	Protein	OS
January	196	114,136,626	4.09	3.28	5.77	15	72,026,410	4.32	3.58	5.71
February	193	105,100,201	4.06	3.24	5.78	15	67,692,319	4.22	3.53	5.75
March	195	118,620,649	4.06	3.23	5.77	15	77,662,518	4.20	3.49	5.74
April	195	116,754,457	4.02	3.22	5.77	15	76,577,396	4.13	3.48	5.72
May	196	121,842,670	3.97	3.20	5.79	14	80,481,629	4.06	3.43	5.76
June	196	117,619,978	3.94	3.17	5.76	14	78,395,052	4.07	3.44	5.72
July	196	119,545,674	3.90	3.15	5.77	14	77,772,767	3.92	3.37	5.74
August	194	117,456,582	3.96	3.18	5.75	14	78,831,212	4.00	3.42	5.72
September	196	110,173,288	4.00	3.23	5.73	14	75,251,456	4.11	3.50	5.70
October	198	113,051,553	4.14	3.34	5.72	14	76,364,572	4.35	3.65	5.69
November	197	109,367,877	4.14	3.35	5.72	13	72,588,252	4.39	3.70	5.65
December	193	113,799,254	4.20	3.35	5.73	13	75,278,211	4.44	3.70	5.67
Average/Total	195	1,377,468,809	4.04	3.24	5.75	14	908,921,794	4.18	3.52	5.71

1/ Includes: Siskiyou County, California; Bonner, Latah and Lincoln Counties, Idaho; Deschutes County, Oregon; and Cache County, Utah.

Table T-3a
Butterfat Tests by Region: 2013

Month	Pacific Northwest Order			
	Western WA	Eastern WA	Western OR 1/	Eastern OR
January	3.97	3.93	4.09	4.32
February	3.90	3.83	4.06	4.22
March	3.92	3.81	4.06	4.20
April	3.87	3.73	4.02	4.13
May	3.80	3.63	3.97	4.06
June	3.79	3.62	3.94	4.07
July	3.78	3.60	3.90	3.92
August	3.72	3.61	3.96	4.00
September	3.78	3.71	4.00	4.11
October	3.91	3.86	4.14	4.35
November	4.01	3.92	4.14	4.39
December	4.01	3.99	4.20	4.44
Average	3.88	3.77	4.04	4.18

1/ Includes: Siskiyou County, California; Bonner, Latah and Lincoln Counties, Idaho; Deschutes County, Oregon; and Cache County, Utah.

Pacific Northwest Order: Butterfat

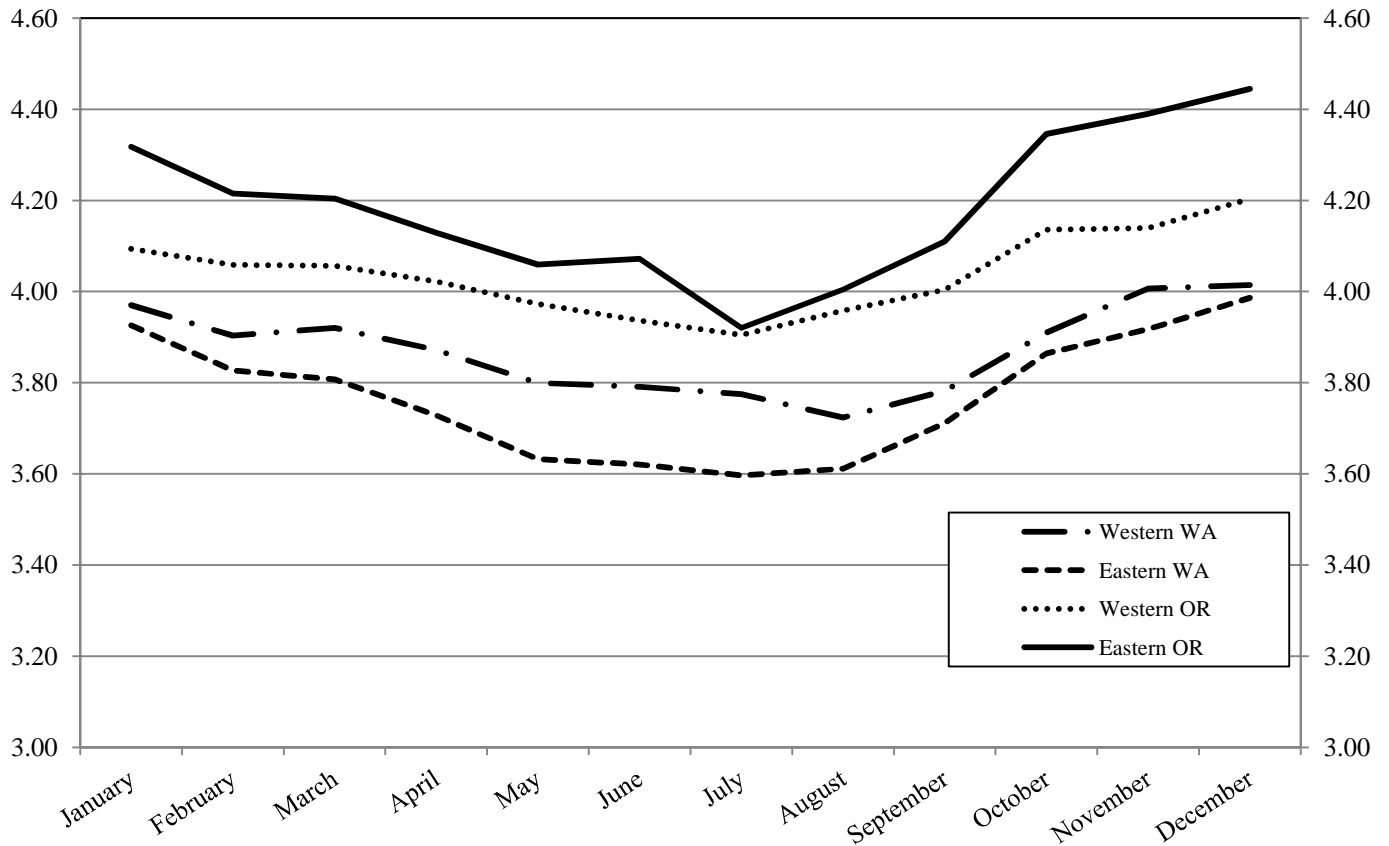


Table T-3b
Protein Tests by Region: 2013

Month	Pacific Northwest Order			
	Western WA	Eastern WA	Western OR 1/	Eastern OR
January	3.21	3.26	3.28	3.58
February	3.16	3.20	3.24	3.53
March	3.16	3.19	3.23	3.49
April	3.15	3.16	3.22	3.48
May	3.11	3.09	3.20	3.43
June	3.09	3.07	3.17	3.44
July	3.07	3.01	3.15	3.37
August	3.07	3.05	3.18	3.42
September	3.12	3.13	3.23	3.50
October	3.24	3.28	3.34	3.65
November	3.27	3.32	3.35	3.70
December	3.26	3.32	3.35	3.70
Average	3.16	3.17	3.24	3.52

1/ Includes: Siskiyou County, California; Bonner, Latah and Lincoln Counties, Idaho; Deschutes County, Oregon; and Cache County, Utah.

Pacific Northwest Order: Protein

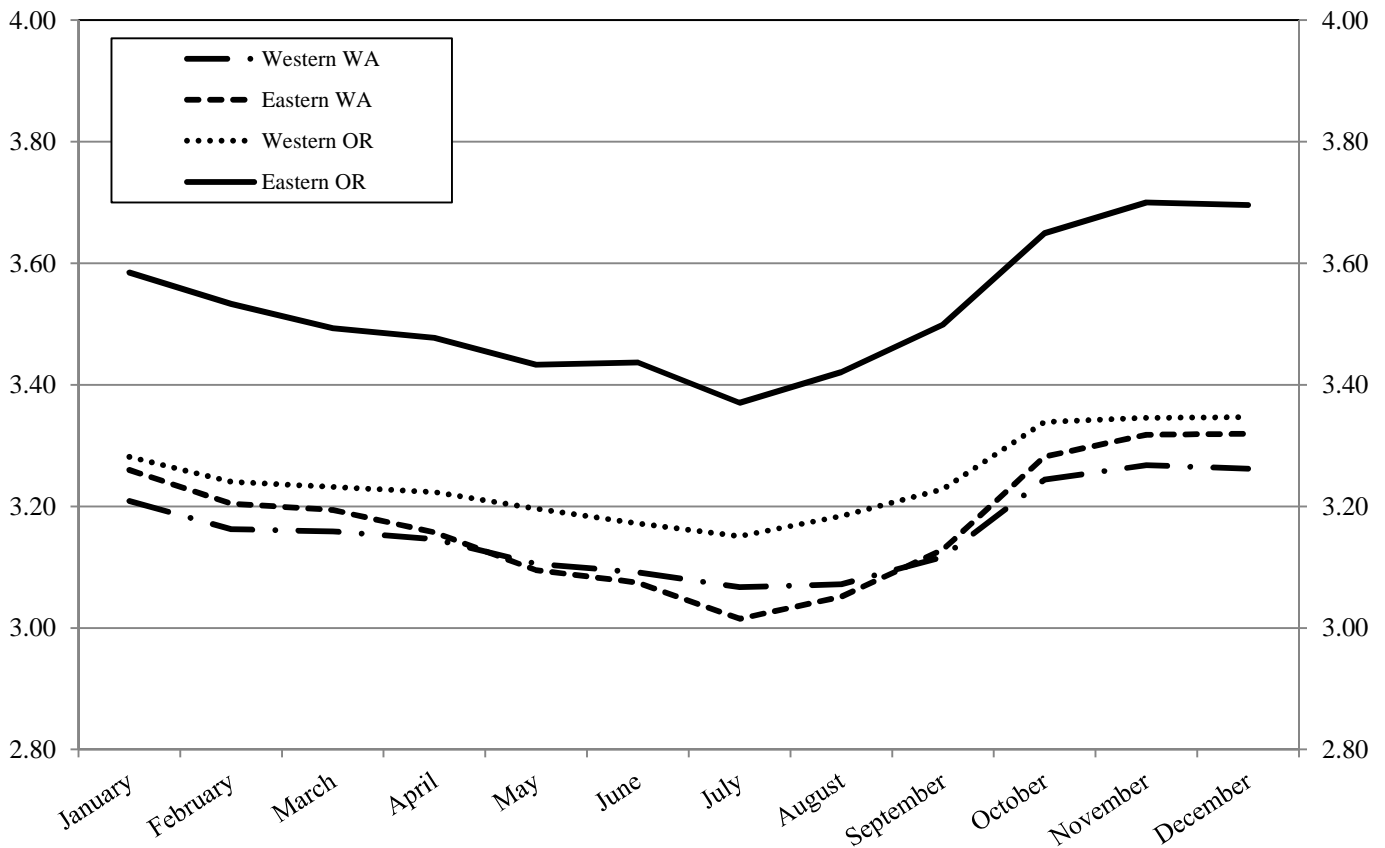


Table T-3c
Other Solids Tests by Region: 2013

Month	Pacific Northwest Order Other Solids			
	Western WA	Eastern WA	Western OR 1/	Eastern OR
January	5.71	5.72	5.77	5.71
February	5.73	5.74	5.78	5.75
March	5.73	5.74	5.77	5.74
April	5.73	5.75	5.77	5.72
May	5.74	5.78	5.79	5.76
June	5.72	5.76	5.76	5.72
July	5.75	5.78	5.77	5.74
August	5.73	5.75	5.75	5.72
September	5.71	5.73	5.73	5.70
October	5.69	5.71	5.72	5.69
November	5.68	5.69	5.72	5.65
December	5.70	5.70	5.73	5.67
Average	5.72	5.74	5.75	5.71

1/ Includes: Siskiyou County, California; Bonner, Latah and Lincoln Counties, Idaho; Deschutes County, Oregon; and Cache County, Utah.

Pacific Northwest Order: Other Solids

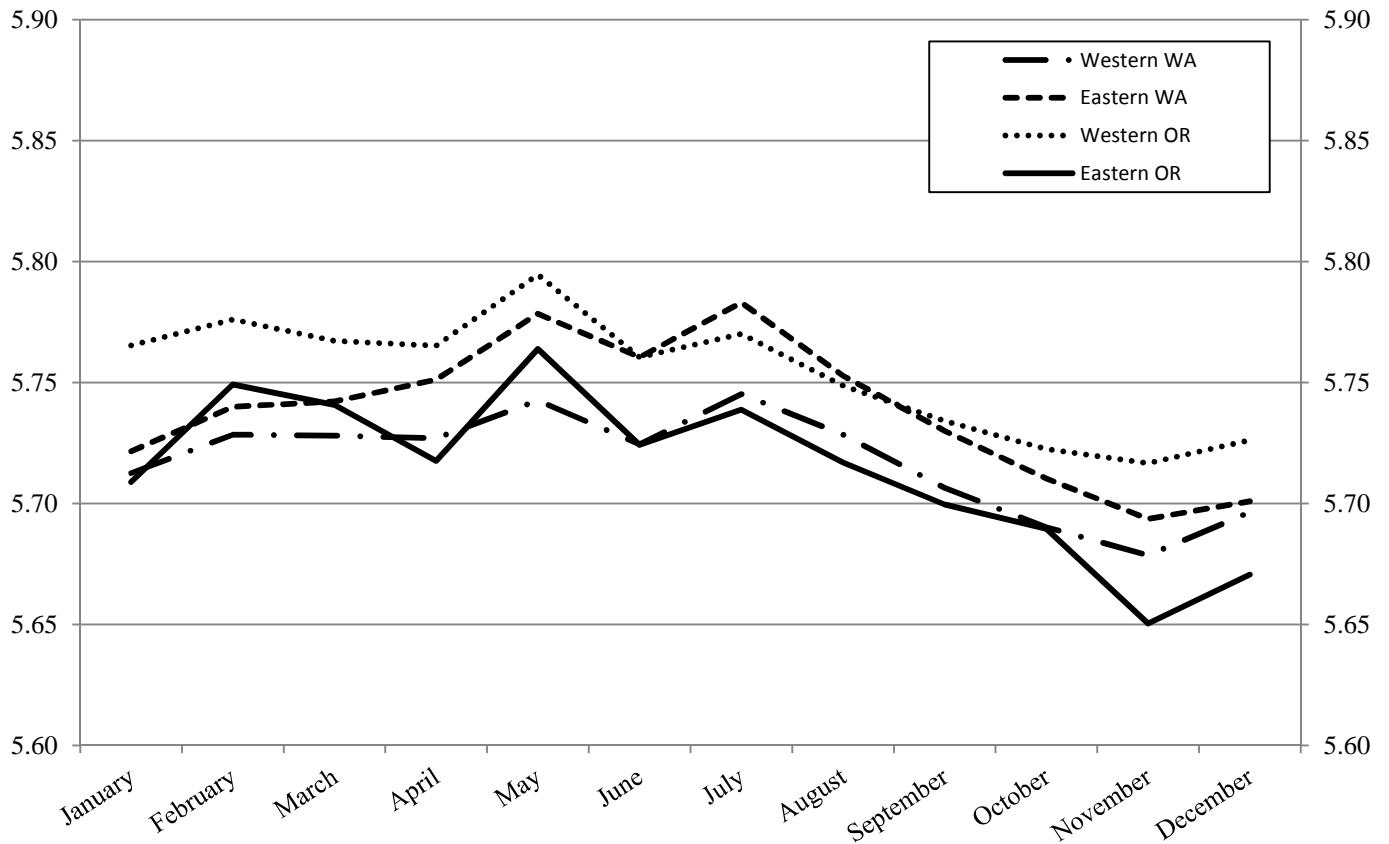
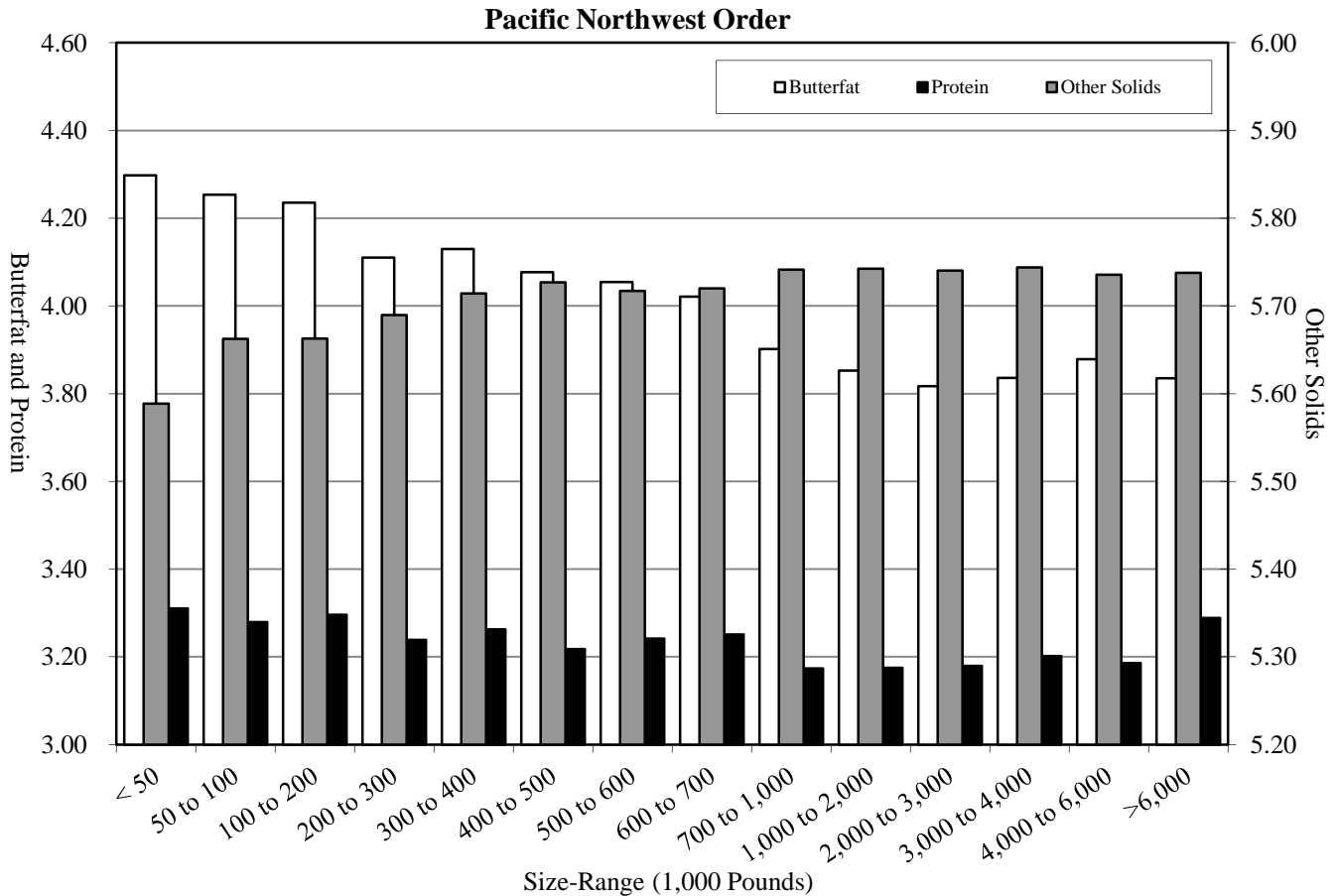


Table T-4
Component Tests by Size-Range of Producer Milk Deliveries: 2013

Size-Range (Pounds)		No. of Observations	Butterfat	Protein	Other Solids
Equal to or more than	Less than				
0	50,000	282	4.30	3.31	5.59
50,000	100,000	509	4.25	3.28	5.66
100,000	200,000	1,013	4.24	3.30	5.66
200,000	300,000	726	4.11	3.24	5.69
300,000	400,000	451	4.13	3.26	5.71
400,000	500,000	366	4.08	3.22	5.73
500,000	600,000	384	4.05	3.24	5.72
600,000	700,000	322	4.02	3.25	5.72
700,000	1,000,000	600	3.90	3.17	5.74
1,000,000	2,000,000	1,073	3.85	3.18	5.74
2,000,000	3,000,000	472	3.82	3.18	5.74
3,000,000	4,000,000	161	3.84	3.20	5.74
4,000,000	6,000,000	239	3.88	3.19	5.74
6,000,000		215	3.84	3.29	5.74
Total/Average		6,813	3.88	3.22	5.73



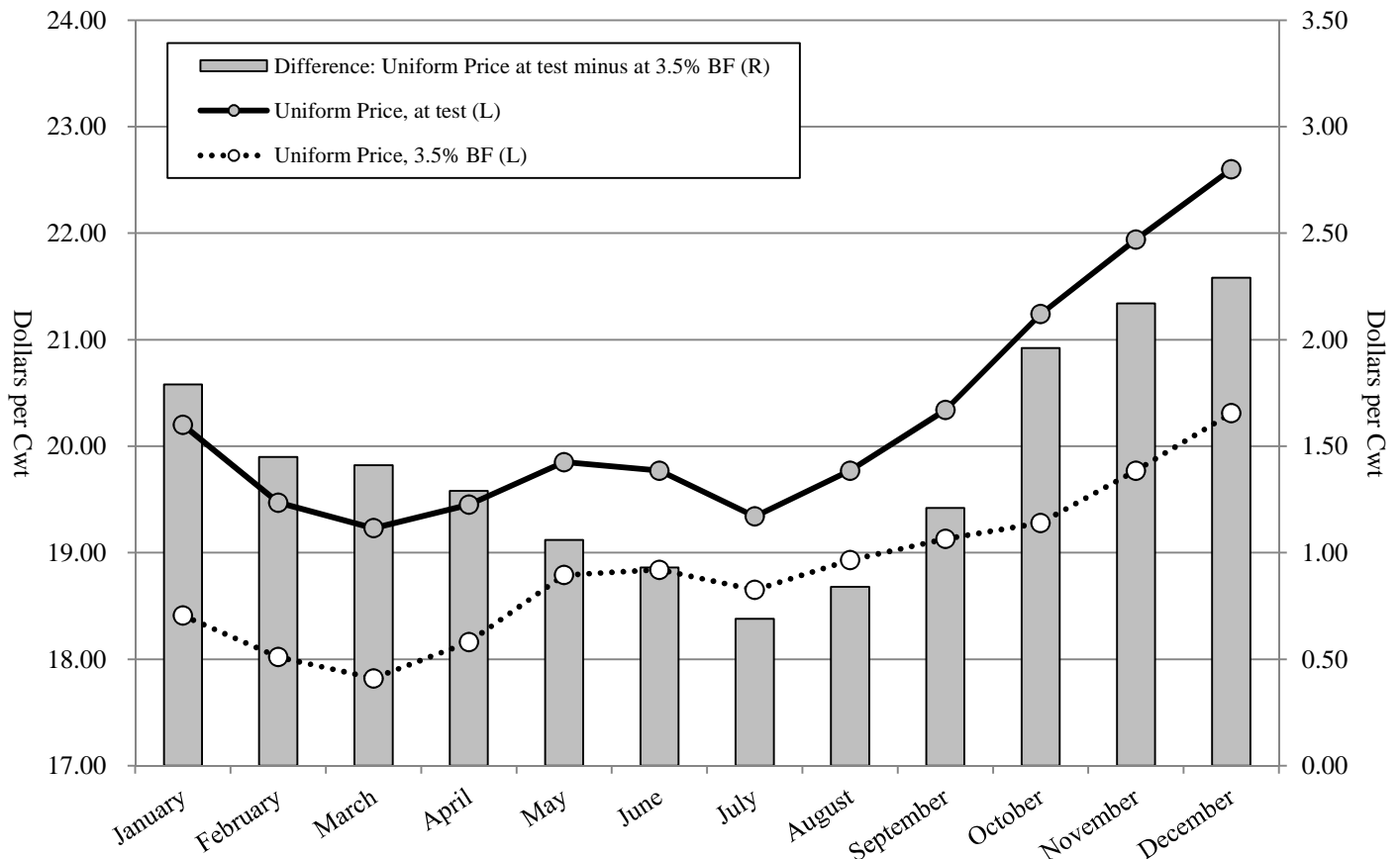
**Table T-5
 Producer Prices and Component Tests by Month: 2013**

Pacific Northwest Order

Month	A		B		Difference (B - A)	Butterfat		Protein		Other Solids		Producer Price Differential 1/
	Uniform Price, 3.5% BF	Uniform Price, at test	Uniform Price, at test	Difference		-\$ / Lb - - % -	-\$ / Lb - - % -	-\$ / Lb - - % -	-\$ / Lb - - % -			
January	18.41	20.20	1.79	1.6168	4.00	3.2862	3.28	0.4647	5.73	0.27		
February	18.02	19.47	1.45	1.6619	3.92	2.9609	3.23	0.4534	5.74	0.77		
March	17.82	19.23	1.41	1.7476	3.92	2.8204	3.22	0.4179	5.74	0.89		
April	18.16	19.45	1.29	1.8227	3.85	3.0130	3.20	0.3863	5.74	0.57		
May	18.79	19.85	1.06	1.7884	3.77	3.3597	3.15	0.3887	5.77	0.27		
June	18.84	19.77	0.93	1.6599	3.76	3.3455	3.13	0.3859	5.75	0.82		
July	18.65	19.34	0.69	1.5693	3.72	3.2257	3.09	0.3927	5.77	1.27		
August	18.93	19.77	0.84	1.5104	3.74	3.4775	3.12	0.3901	5.74	1.02		
September	19.13	20.34	1.21	1.5196	3.82	3.5419	3.19	0.3914	5.72	0.99		
October	19.28	21.24	1.96	1.6638	3.98	3.4107	3.33	0.3852	5.71	1.06		
November	19.77	21.94	2.17	1.6336	4.03	3.6316	3.35	0.3955	5.69	0.94		
December	20.31	22.60	2.29	1.7672	4.08	3.5390	3.35	0.3826	5.70	1.36		
Average	18.83	20.25	1.42	1.6681	3.88	3.2966	3.22	0.4028	5.73	0.85		

1/ The producer price differentials for the Pacific Northwest Order are subject to applicable location adjustments.

Pacific Northwest Order



**Table T-6
 Producer Milk and Value by Size-Range of Producer Milk Deliveries: 2013**

Pacific Northwest Order

Size-Range		Producer Milk	Percent of Producer Milk	No. of Observations	Percent of Observations	Producer Milk Value at Test 1/	Value at Test
Equal to or more than	Less than						
- - - Pounds - - -		- Pounds -	- % -		- % -	- Dollars -	- \$ / Cwt -
0	50,000	9,371,467	0.1%	282	4.1%	1,986,423.10	21.20
50,000	100,000	38,440,446	0.5%	509	7.5%	8,093,944.15	21.06
100,000	200,000	146,837,001	1.8%	1,013	14.9%	30,925,543.66	21.06
200,000	300,000	180,648,650	2.2%	726	10.7%	37,277,161.99	20.64
300,000	400,000	155,587,535	1.9%	451	6.6%	32,312,283.47	20.77
400,000	500,000	164,983,985	2.0%	366	5.4%	34,024,657.24	20.62
500,000	600,000	210,615,964	2.6%	384	5.6%	43,427,285.23	20.62
600,000	700,000	208,452,473	2.5%	322	4.7%	42,840,643.38	20.55
700,000	1,000,000	495,618,276	6.0%	600	8.8%	99,516,837.16	20.08
1,000,000	2,000,000	1,544,851,480	18.8%	1,073	15.7%	309,640,370.46	20.04
2,000,000	3,000,000	1,144,636,289	13.9%	472	6.9%	228,835,314.08	19.99
3,000,000	4,000,000	568,110,286	6.9%	161	2.4%	114,205,080.53	20.10
4,000,000	6,000,000	1,153,697,081	14.0%	239	3.5%	232,405,668.20	20.14
6,000,000		2,214,941,459	26.9%	215	3.2%	452,143,577.58	20.41
Total/Average		8,236,792,392	100.0%	6,813	100.0%	1,667,634,790.21	20.25

1/ Based on Federal order producer minimum prices. Producer prices are subject to location adjustments.

Pacific Northwest Order

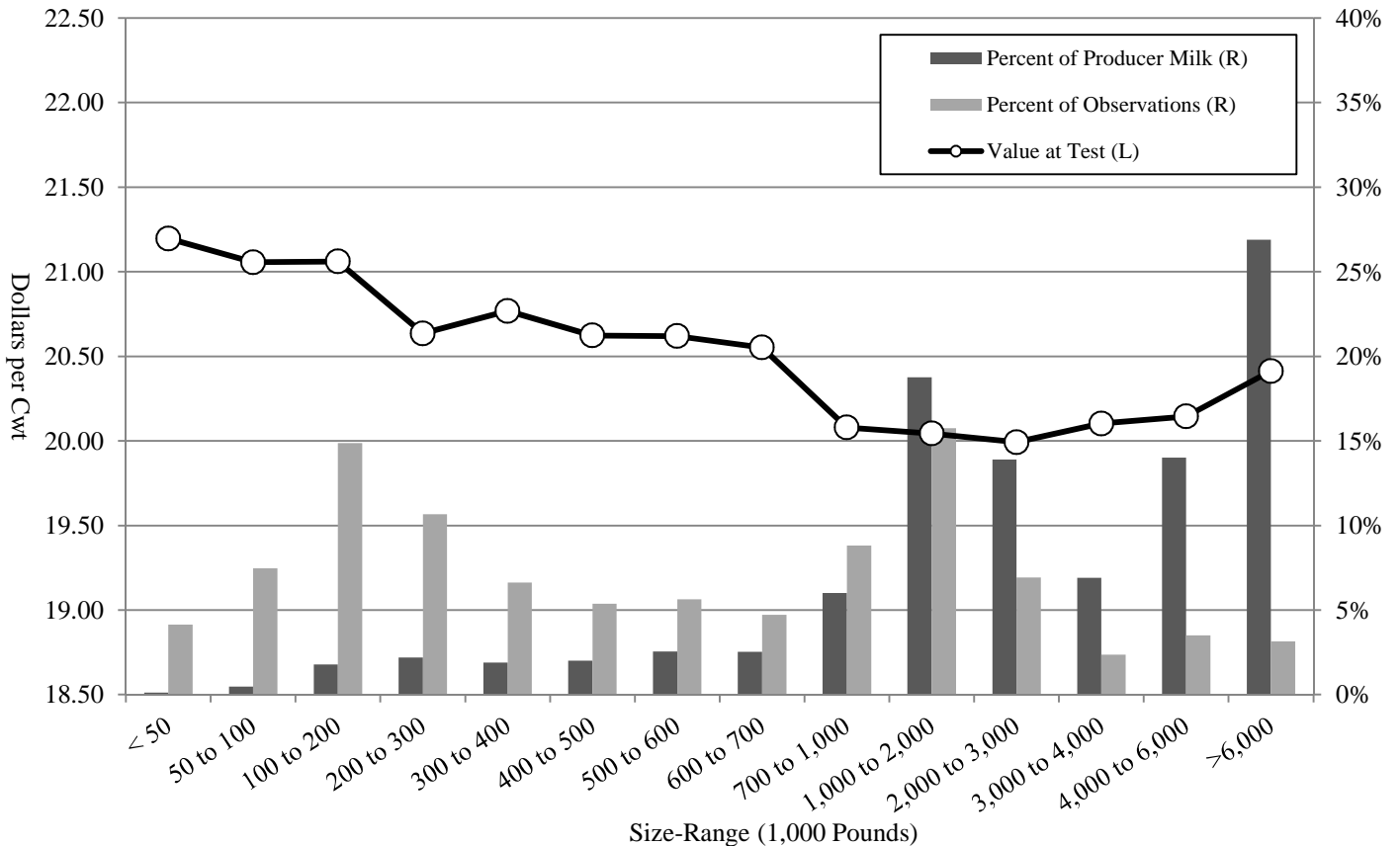


Table T-7a
Long Term Trends in Component Tests, Butterfat: 2004-2013

Pacific Northwest Order

Year	Average No. of Producers	Test	Standard Deviation	Minimum	Maximum
2004	829	3.68	0.37	2.43	5.66
2005	817	3.67	0.37	2.36	5.57
2006	779	3.69	0.36	2.49	5.47
2007	705	3.70	0.39	2.60	5.86
2008	610	3.67	0.39	2.60	5.65
2009	624	3.71	0.41	2.62	5.83
2010	632	3.73	0.43	2.74	6.10
2011	610	3.77	0.43	2.70	6.21
2012	532	3.81	0.42	2.78	6.20
2013	568	3.88	0.44	2.84	6.07
10 year Simple Average	671	3.73	0.40	2.62	5.86

Pacific Northwest Order: Butterfat

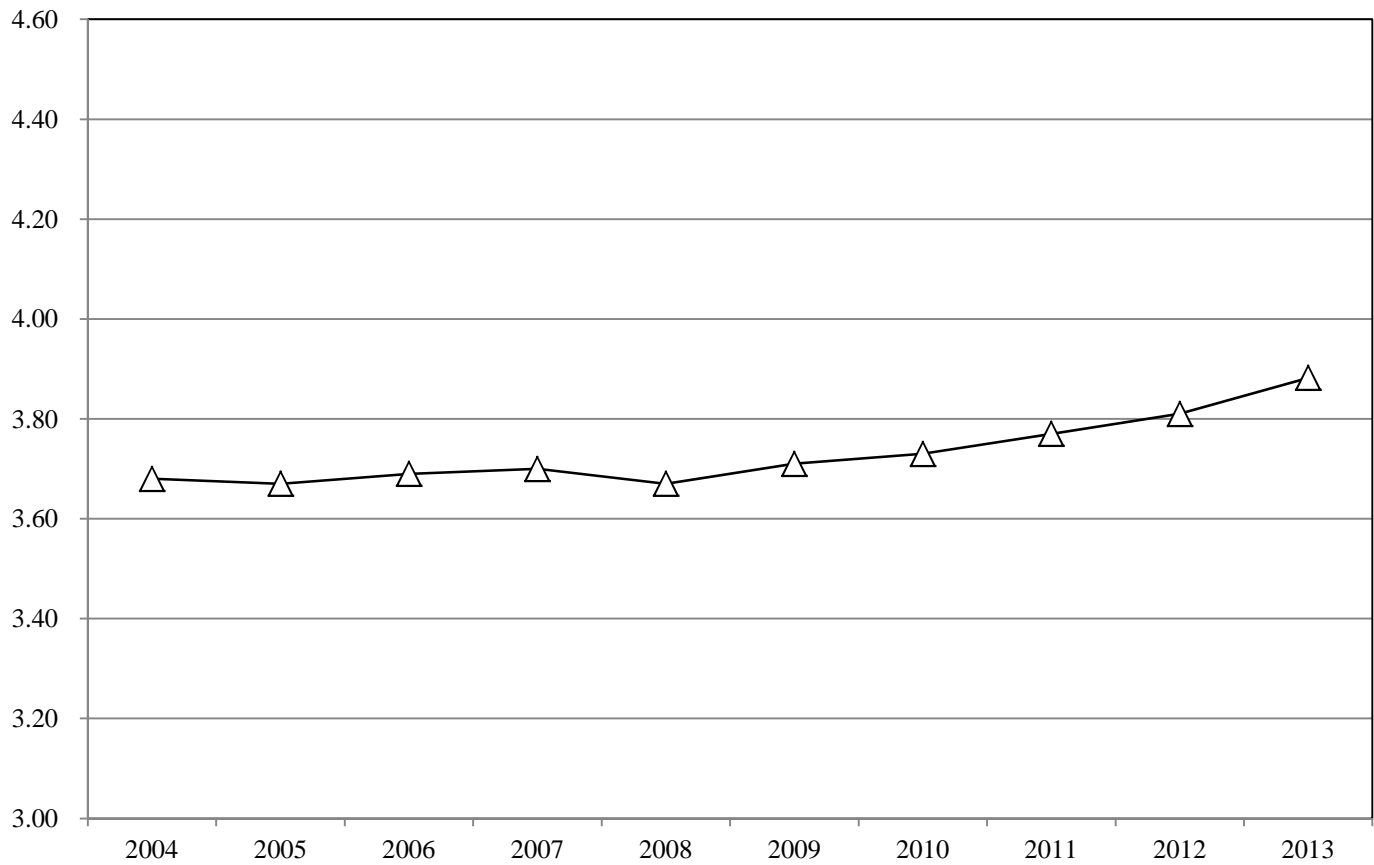


Table T-7b
Long Term Trends in Component Tests, Protein: 2004-2013

Pacific Northwest Order

Year	Average No. of Producers	Test	Standard Deviation	Minimum	Maximum
2004	829	3.05	0.20	2.36	4.20
2005	817	3.05	0.20	2.55	4.14
2006	779	3.07	0.20	2.21	4.09
2007	705	3.09	0.21	2.17	4.42
2008	610	3.09	0.21	2.58	4.28
2009	624	3.11	0.22	2.63	4.09
2010	632	3.15	0.22	2.13	4.40
2011	610	3.17	0.22	2.58	4.43
2012	532	3.17	0.22	2.47	4.31
2013	568	3.22	0.22	2.58	4.30
10 year Simple Average					
	671	3.12	0.21	2.43	4.27

Pacific Northwest Order: Protein

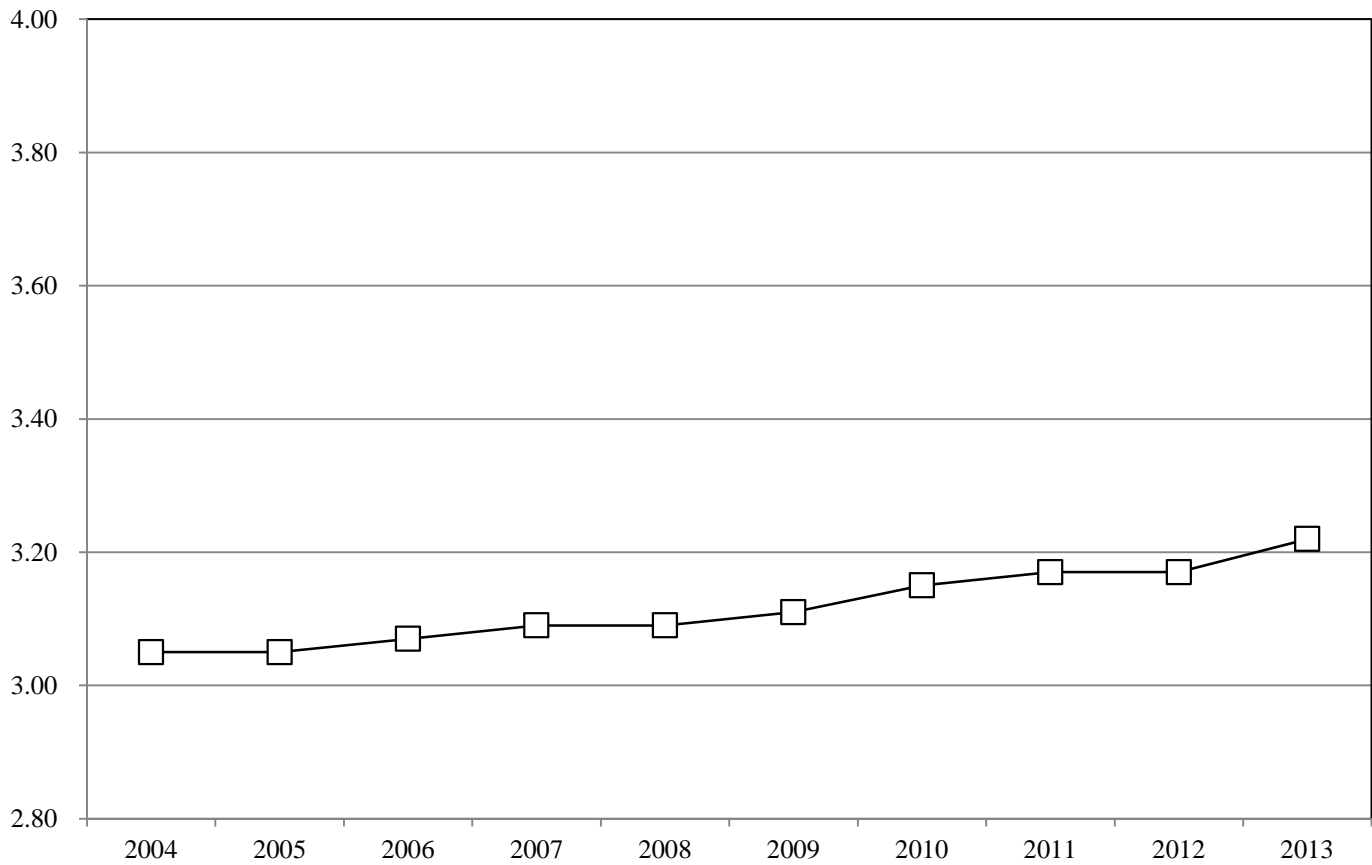


Table T-7c
Long Term Trends in Component Tests, Other Solids: 2004-2013

Pacific Northwest Order

Year	Average No. of Producers	Test	Standard Deviation	Minimum	Maximum
2004	829	5.69	0.10	4.48	5.94
2005	817	5.71	0.10	4.23	5.95
2006	779	5.70	0.11	4.84	6.15
2007	705	5.71	0.09	4.78	5.93
2008	610	5.70	0.09	4.86	5.99
2009	624	5.69	0.09	4.96	5.87
2010	632	5.71	0.09	4.71	5.92
2011	610	5.73	0.09	4.86	6.01
2012	532	5.74	0.09	4.62	5.95
2013	568	5.73	0.08	4.67	5.97
10 year Simple Average	671	5.71	0.09	4.70	5.97

Pacific Northwest Order: Other Solids

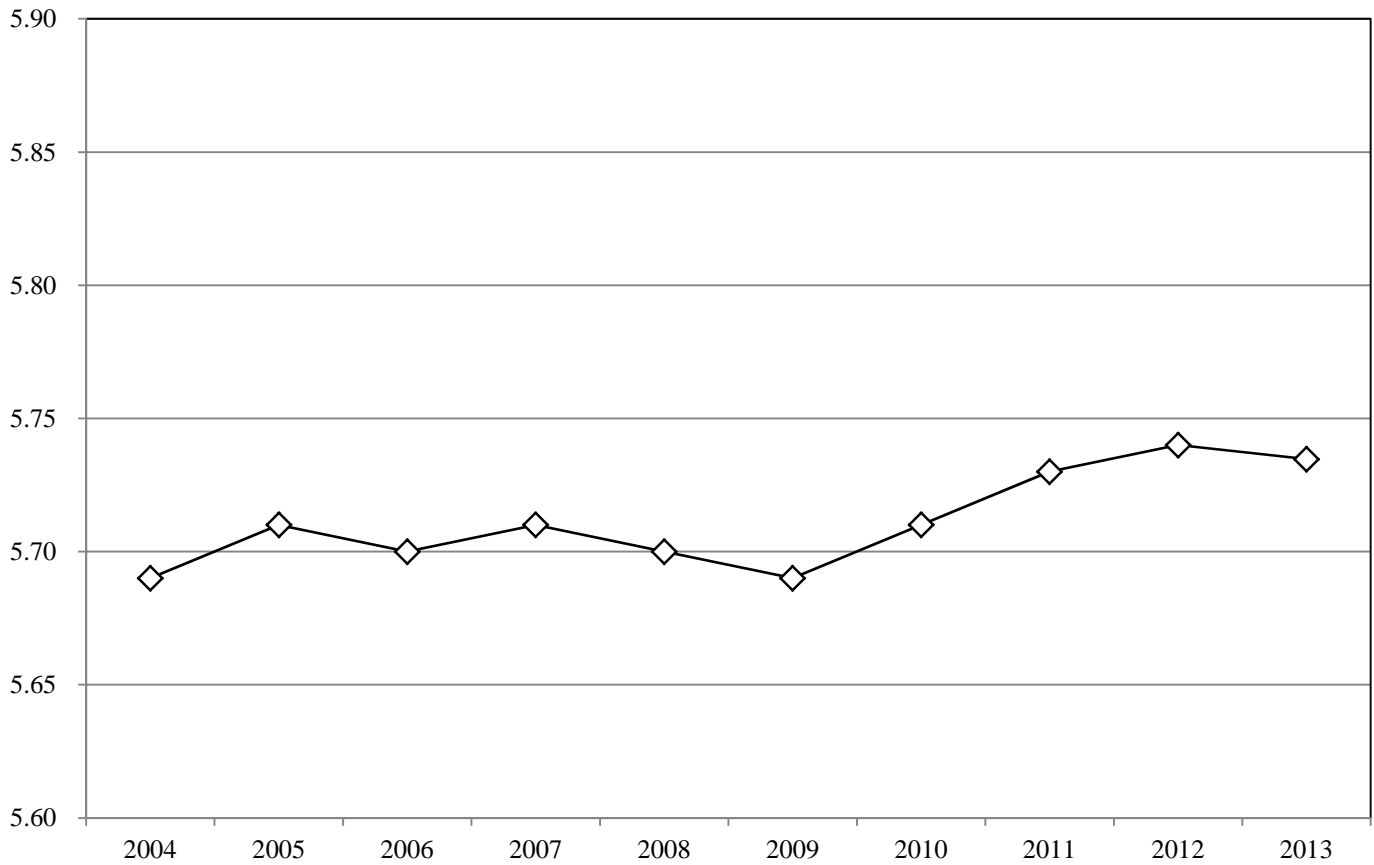


Table T-8

Number of Producers, Producer Milk, Component Tests and Standard Deviations: 2013

Arizona Order

Month	No. of Producers	Producer Milk	Butterfat	
			Test	Standard Deviation
January	94	398,169,235	3.63	0.34
February	94	378,828,890	3.55	0.31
March	92	434,497,879	3.49	0.32
April	92	415,919,230	3.46	0.31
May	91	419,364,716	3.44	0.30
June	91	386,053,508	3.43	0.31
July	91	363,464,532	3.46	0.29
August	92	360,338,680	3.48	0.29
September	93	331,787,563	3.51	0.30
October	90	367,794,339	3.58	0.31
November	91	364,885,228	3.57	0.36
December	90	394,272,732	3.62	0.32
Average/Total	92	4,615,376,532	3.52	0.32

Arizona Order

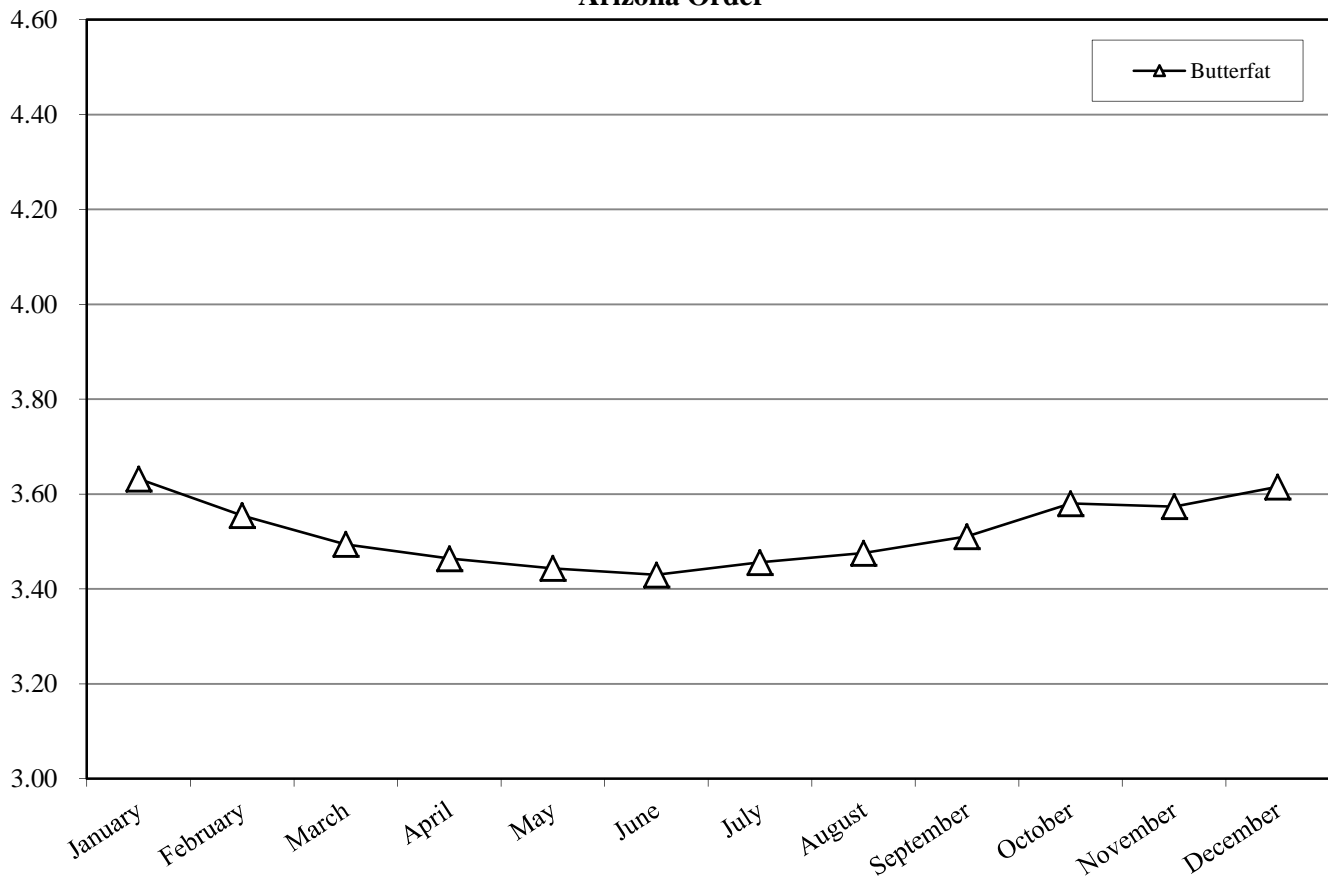


Table T-9
Component Tests by Size-Range of Producer Milk Deliveries: 2013

Size-Range (Pounds)		No. of Observations	Butterfat
Equal to or more than	Less than		
0	200,000	10	3.53
200,000	300,000	5	3.74
300,000	400,000	3	3.62
400,000	500,000	3	3.98
500,000	600,000	7	3.63
600,000	700,000	13	3.60
700,000	1,000,000	74	3.58
1,000,000	2,000,000	211	3.71
2,000,000	3,000,000	200	3.69
3,000,000	4,000,000	105	3.59
4,000,000	5,000,000	133	3.55
5,000,000	6,000,000	127	3.46
6,000,000	7,000,000	67	3.49
7,000,000		143	3.43
Total/Average		1,101	3.52

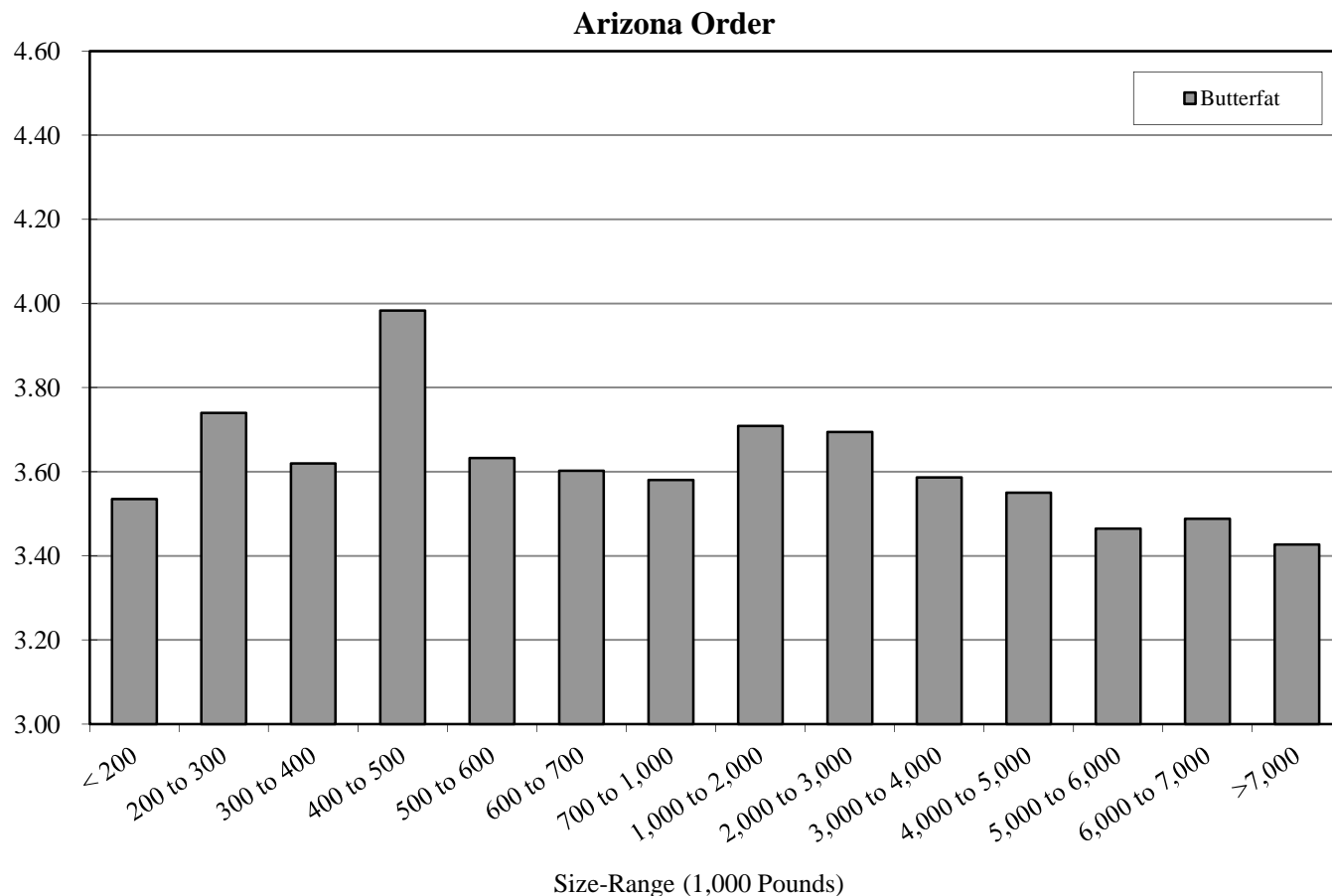


Table T-10
Producer Prices and Component Tests by Month: 2013

Arizona Order

Month	A		B		Difference		Butterfat 1/		Skim 1/			
	Uniform Price, 3.5% BF	Uniform Price, at test	(B - A)									
				--- \$ / Cwt ---		-\$ / Lb -		- % -		-\$ / Cwt -		- % -
January	18.82	19.02	0.20		1.6419	3.63	13.55	96.37				
February	18.51	18.60	0.09		1.6639	3.55	13.15	96.45				
March	18.30	18.29	(0.01)		1.7394	3.49	12.65	96.51				
April	18.61	18.55	(0.06)		1.8119	3.46	12.71	96.54				
May	19.11	19.01	(0.10)		1.7948	3.44	13.29	96.56				
June	19.27	19.16	(0.11)		1.6862	3.43	13.85	96.57				
July	19.17	19.10	(0.07)		1.5944	3.46	14.08	96.54				
August	19.41	19.38	(0.03)		1.5319	3.48	14.56	96.52				
September	19.79	19.81	0.02		1.5301	3.51	14.96	96.49				
October	20.24	20.36	0.12		1.6364	3.58	15.04	96.42				
November	20.70	20.81	0.11		1.6471	3.57	15.48	96.43				
December	21.34	21.52	0.18		1.7451	3.62	15.78	96.38				
Average	19.41	19.44	0.03		1.6740	3.52	14.04	96.48				

1/ The producer prices for the Arizona Order are subject to applicable location adjustments.

Arizona Order

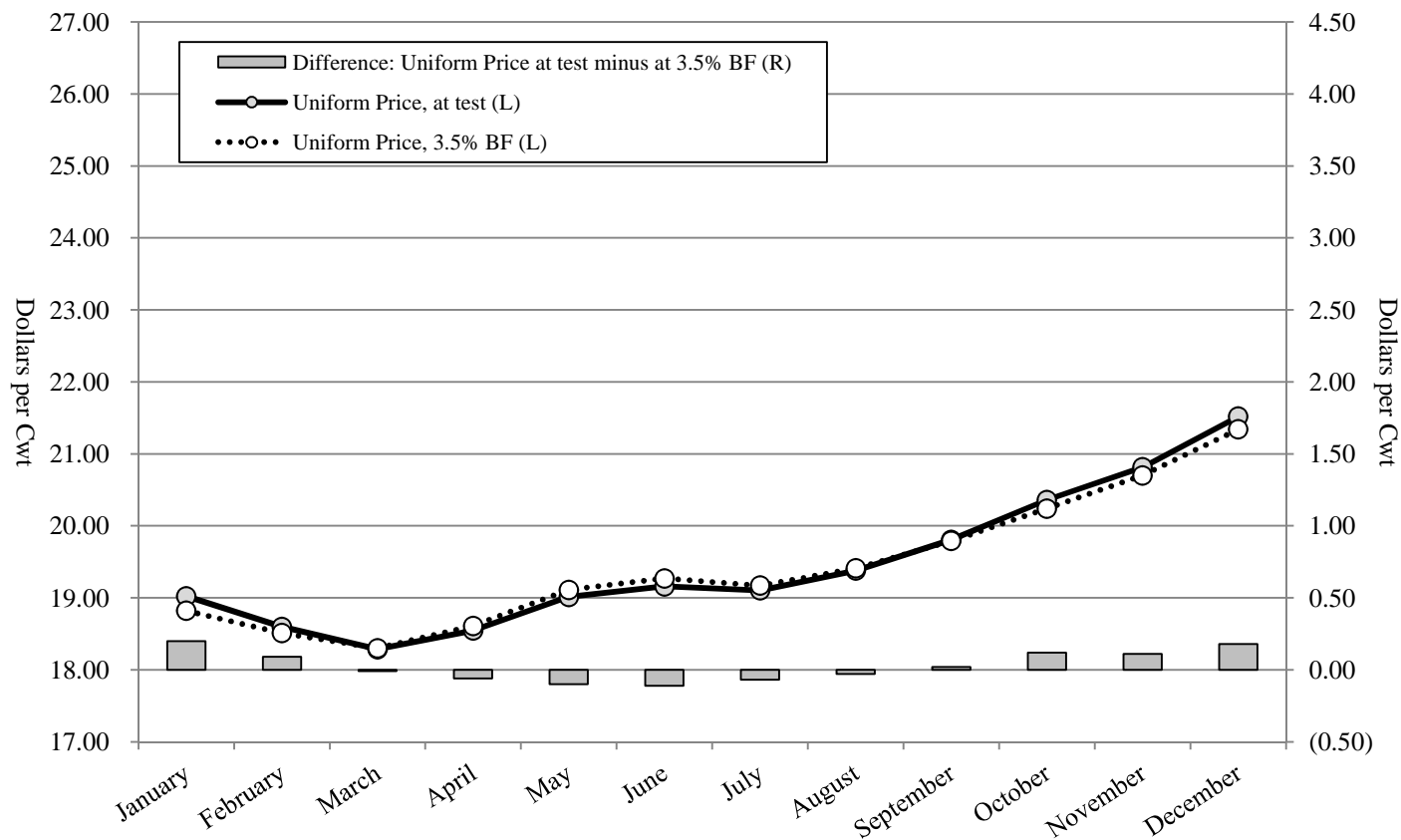


Table T-11
Producer Milk and Value by Size-Range of Producer Milk Deliveries: 2013

Arizona Order

Size-Range		Producer Milk	Percent of Producer Milk	No. of Observations	Percent of Observations	Producer Milk Value at Test 1/	Value at Test
Equal to or more than	Less than						
- - - Pounds - - -		- Pounds -	- % -		- % -	- Dollars -	- \$ / Cwt -
0	200,000	1,054,802	0.02%	10	0.91%	200,300.43	18.99
200,000	300,000	1,262,100	0.03%	5	0.45%	241,189.41	19.11
300,000	400,000	996,240	0.02%	3	0.27%	191,278.14	19.20
400,000	500,000	1,377,666	0.03%	3	0.27%	281,967.66	20.47
500,000	600,000	3,858,877	0.08%	7	0.64%	755,164.21	19.57
600,000	700,000	8,568,020	0.19%	13	1.18%	1,672,200.29	19.52
700,000	1,000,000	63,600,527	1.38%	74	6.72%	12,526,928.55	19.70
1,000,000	2,000,000	333,629,368	7.23%	211	19.16%	66,181,432.63	19.84
2,000,000	3,000,000	485,759,861	10.52%	200	18.17%	95,692,219.25	19.70
3,000,000	4,000,000	366,480,644	7.94%	105	9.54%	71,391,896.32	19.48
4,000,000	5,000,000	604,473,285	13.10%	133	12.08%	119,045,456.43	19.69
5,000,000	6,000,000	690,986,477	14.97%	127	11.53%	133,234,673.39	19.28
6,000,000	7,000,000	429,370,636	9.30%	67	6.09%	82,539,739.99	19.22
7,000,000		1,623,958,029	35.19%	143	12.99%	313,162,914.79	19.28
Total/Average		4,615,376,532	100.00%	1,101	100.00%	897,117,361.50	19.44

1/ Based on Federal order minimum producer prices. Producer prices are subject to location adjustments.

Arizona Order

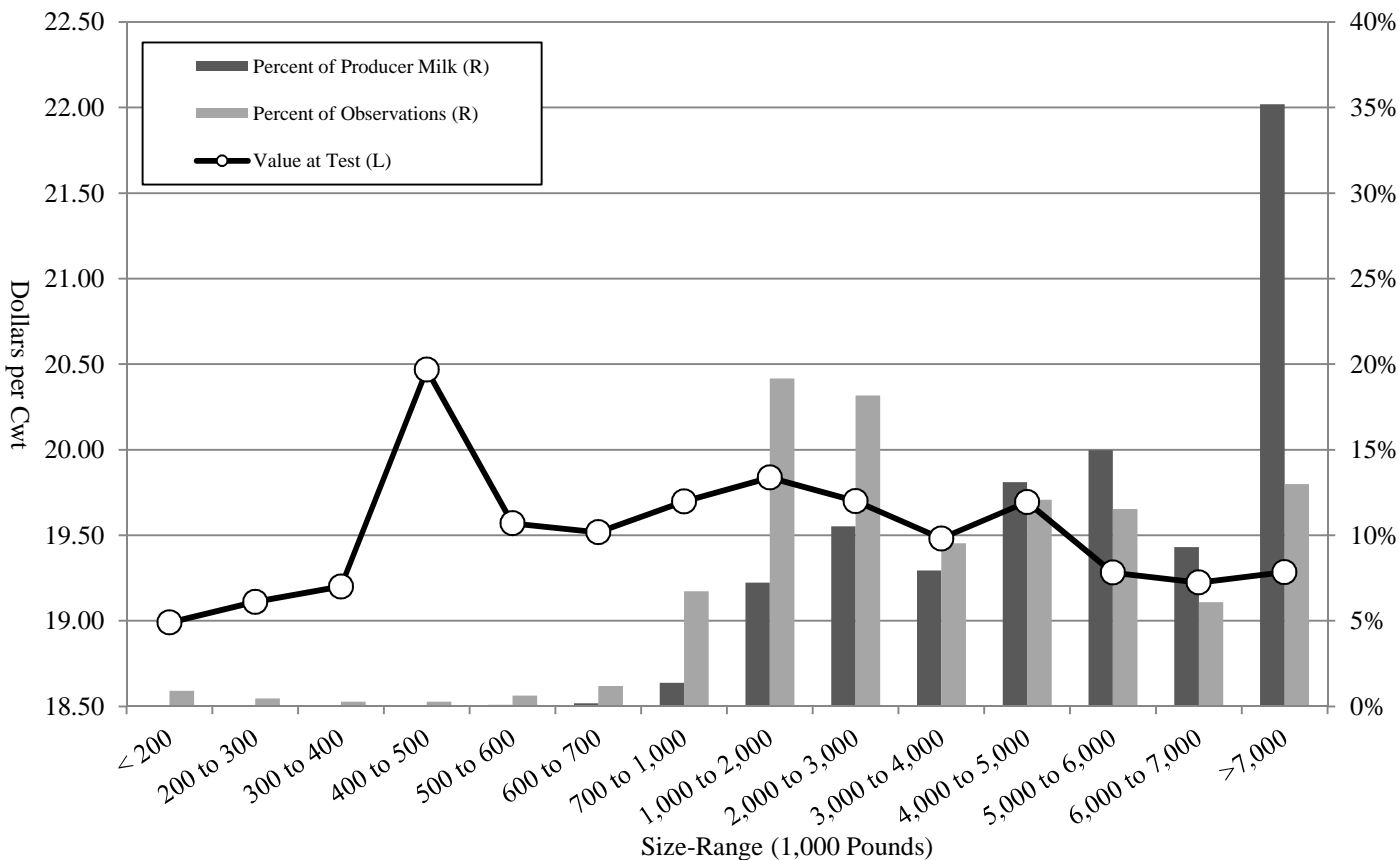


Table T-12
Long Term Trends in Component Tests, Butterfat: 2004-2013

Arizona Order

Year	Average No. of Producers	Test	Standard Deviation	Minimum	Maximum
2004	95	3.61	0.30	2.81	4.87
2005	87	3.59	0.33	2.62	4.92
2006	92	3.59	0.32	2.94	4.88
2007	93	3.59	0.32	2.62	4.86
2008	99	3.56	0.33	2.87	5.07
2009	97	3.49	0.33	2.59	5.60
2010	96	3.50	0.36	2.36	5.45
2011	100	3.55	0.33	2.48	4.99
2012	95	3.55	0.33	2.98	5.46
2013	92	3.52	0.32	2.90	5.09
10 year Simple Average	95	3.55	0.33	2.72	5.12

Arizona Order: Butterfat

