

**UNITED STATES DEPARTMENT OF AGRICULTURE**

Agricultural Marketing Service

Dairy Programs

**FEDERAL MILK ORDERS 124 & 131**

1930-220<sup>th</sup> Street SE, Ste. 102  
Bothell, WA 98021  
Phone: (425) 487-6009  
Fax: (425) 487-2775  
Email: [fmmaseattle@fmmaseattle.com](mailto:fmmaseattle@fmmaseattle.com)

4835 E. Cactus Road, Ste. 365  
Scottsdale, AZ 85254  
Phone: (602) 547-2909  
Fax: (602) 547-2906

**OVERVIEW OF COMPONENT TESTS OF PRODUCER MILK  
AT THE FARM LEVEL**

**PACIFIC NORTHWEST AND ARIZONA  
FEDERAL MILK MARKETING ORDERS**

**2014**

**January 2016**

The U.S. Department of Agriculture (USDA) prohibits discrimination in all its programs and activities on the basis of race, color, national origin, age, disability, and where applicable, sex, marital status, familial status, parental status, religion, sexual orientation, genetic information, political beliefs, reprisal, or because all or part of an individual's income is derived from any public assistance program. (Not all prohibited bases apply to all programs.) Persons with disabilities who require alternative means for communication of program information (Braille, large print, audiotape, etc.) should contact USDA's TARGET Center at (202) 720-2600 (voice and TDD). To file a complaint of discrimination, write to USDA, Director, Office of Civil Rights, 1400 Independence Avenue, S.W., Washington, D.C. 20250-9410, or call (800) 795-3272 (voice) or (202) 720-6382 (TDD). USDA is an equal opportunity provider and employer.

# OVERVIEW OF COMPONENT TESTS OF PRODUCER MILK AT THE FARM LEVEL

## PACIFIC NORTHWEST AND ARIZONA FEDERAL MILK MARKETING ORDERS

2014

The following tables provide an overview of component tests of producer milk pooled on the Pacific Northwest (FO 124) and Arizona (FO 131) Federal Milk Marketing Orders. The tables summarize average tests by order, month, year, region, and size-range of production. Producer milk values are also calculated using Federal order minimum producer prices for the respective orders at 3.5% butterfat and at test. All test and value averages are weighted averages unless otherwise noted.

The farm level data included in these tables comprises all producers and producer milk pooled on the Pacific Northwest and Arizona Orders. The data was collected from producer payrolls submitted by handlers to the market administrator's office. Components available for the Pacific Northwest Order are butterfat, protein, and other solids. Other solids are lactose and minerals. The component for the Arizona Order is butterfat. In certain months, milk production that historically qualified to be pooled on an order may not have been pooled due to price relationships. This historically eligible producer milk is **not** included in this analysis. Large changes in producer numbers and producer milk typically indicate those months when milk was not pooled due to price relationships. Small differences may be evident between published pool information and the data shown in this overview due to the use of partially audited payroll data.

The orders' milksheds were divided into different regions when possible. The Pacific Northwest Order's milkshed was divided into four regions representing each of Oregon and Washington divided by the Cascade Mountain Range. In Oregon and Washington, the west side of the Cascade Mountain Range has more precipitation and is characterized by a milder climate than the eastern side of the states. The region east of the Cascade Mountain Range has a drier climate with warmer summers and colder winters. Arizona is very dry year round with little precipitation and relatively high temperatures where most milk is produced. Data from a small number of counties of other states are included in the data for the defined regions based on order association, relative proximity, and/or to prevent the release of restricted data.

The regions are:

- Western Washington
- Eastern Washington (& Idaho and Utah)
- Western Oregon (& Northern California)
- Eastern Oregon
- Arizona (& Southern California and Texas)

An index of Tables grouped by Federal order can be found on page ii.

Index of Tables

Page  
Number

**Pacific Northwest Order (FO 124)**

Tables:	T-1	Number of Producers, Producer Milk, Component Tests and Standard Deviations: 2014 .....	1
	T-2	Number of Producers, Producer Milk and Component Tests by Region: 2014 .....	2
	T-3a	Butterfat Tests by Region: 2014 .....	3
	T-3b	Protein Tests by Region: 2014 .....	4
	T-3c	Other Solids Tests by Region: 2014 .....	5
	T-4	Component Tests by Size-Range of Producer Milk Deliveries: 2014 .....	6
	T-5	Producer Prices and Component Tests by Month: 2014 .....	7
	T-6	Producer Milk and Value by Size-Range of Producer Milk Deliveries: 2014 .....	8
	T-7a	Long Term Trends in Component Tests, Butterfat: 2005-2014 .....	9
	T-7b	Long Term Trends in Component Tests, Protein: 2005-2014 .....	10
	T-7c	Long Term Trends in Component Tests, Other Solids: 2005-2014 .....	11

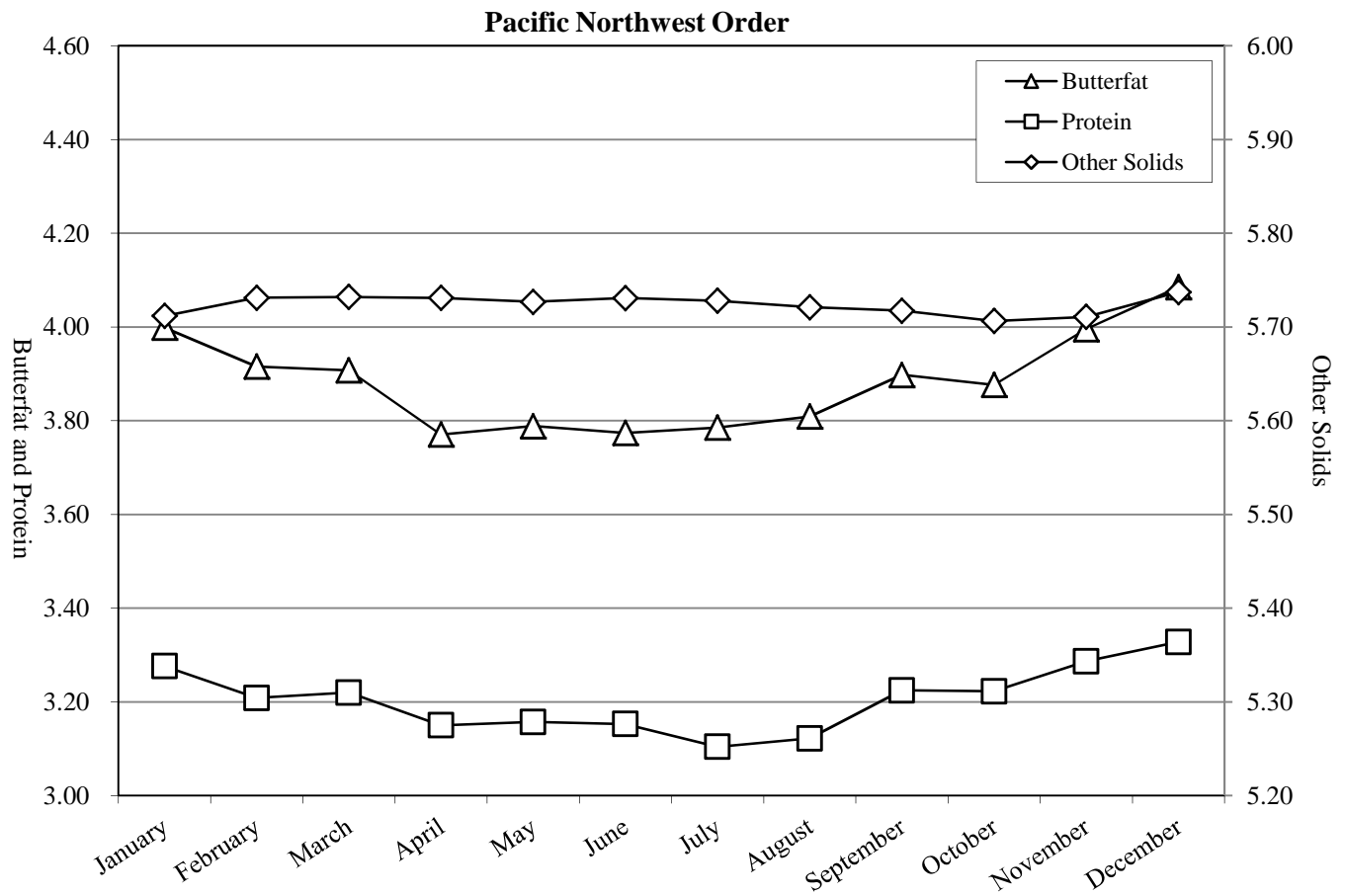
**Arizona Order (FO 131)**

T-8	Number of Producers, Producer Milk, Component Tests and Standard Deviations: 2014 .....	12
T-9	Component Tests by Size-Range of Producer Milk Deliveries: 2014 .....	13
T-10	Producer Prices and Component Tests by Month: 2014 .....	14
T-11	Producer Milk and Value by Size-Range of Producer Milk Deliveries: 2014 .....	15
T-12	Long Term Trends in Component Tests, Butterfat: 2005-2014 .....	16

**Table T-1**

**Number of Producers, Producer Milk, Component Tests and Standard Deviations: 2014**

Pacific Northwest Order								
Month	No. of Producers	Producer Milk	Butterfat		Protein		Other Solids	
			Test	Standard Deviation	Test	Standard Deviation	Test	Standard Deviation
January	585	727,157,510	4.00	0.47	3.28	0.24	5.71	0.10
February	441	440,595,865	3.92	0.43	3.21	0.21	5.73	0.08
March	584	753,756,117	3.91	0.45	3.22	0.21	5.73	0.07
April	473	578,737,220	3.77	0.40	3.15	0.19	5.73	0.08
May	582	772,326,689	3.79	0.43	3.16	0.21	5.73	0.07
June	572	744,777,524	3.77	0.42	3.15	0.20	5.73	0.07
July	574	744,248,403	3.79	0.41	3.10	0.20	5.73	0.08
August	585	742,995,567	3.81	0.43	3.12	0.21	5.72	0.08
September	579	716,980,054	3.90	0.45	3.22	0.22	5.72	0.09
October	430	474,995,870	3.88	0.42	3.22	0.20	5.71	0.09
November	429	435,216,457	4.00	0.46	3.29	0.22	5.71	0.09
December	578	725,170,868	4.09	0.49	3.33	0.24	5.74	0.09
<b>Average/Total</b>	<b>534</b>	<b>7,856,958,144</b>	<b>3.88</b>	<b>0.45</b>	<b>3.20</b>	<b>0.22</b>	<b>5.72</b>	<b>0.08</b>



**Table T-2****Number of Producers, Producer Milk and Component Tests by Region: 2014****Pacific Northwest Order**

Month	Western Washington					Eastern Washington 1/				
	No. of Producers	Producer Milk	Butterfat	Protein	OS	No. of Producers	Producer Milk	Butterfat	Protein	OS
January	252	178,704,008	3.93	3.20	5.71	134	353,617,766	3.92	3.24	5.71
February	252	164,486,573	3.94	3.20	5.72	95	202,738,086	3.91	3.22	5.73
March	252	185,878,344	3.90	3.17	5.73	135	364,364,593	3.80	3.18	5.74
April	253	183,479,435	3.86	3.15	5.72	125	316,586,605	3.71	3.15	5.73
May	253	190,207,985	3.81	3.11	5.72	134	374,798,642	3.64	3.10	5.73
June	251	182,839,433	3.79	3.11	5.72	136	368,079,887	3.63	3.10	5.74
July	251	185,083,494	3.80	3.09	5.72	139	367,518,203	3.66	3.04	5.75
August	250	181,966,183	3.82	3.11	5.70	140	367,712,018	3.68	3.06	5.73
September	250	173,120,162	3.89	3.18	5.70	134	357,116,164	3.77	3.18	5.73
October	249	175,280,833	3.94	3.22	5.69	87	225,446,458	3.83	3.23	5.72
November	249	168,916,793	4.03	3.27	5.70	85	194,240,480	3.99	3.31	5.72
December	246	177,499,161	4.02	3.26	5.74	134	356,008,419	4.02	3.30	5.76
Average/Total	251	2,147,462,404	3.89	3.17	5.71	123	3,848,227,321	3.78	3.17	5.73

Month	Western Oregon 2/					Eastern Oregon				
	No. of Producers	Producer Milk	Butterfat	Protein	OS	No. of Producers	Producer Milk	Butterfat	Protein	OS
January	186	116,954,319	4.13	3.28	5.74	13	77,881,417	4.32	3.61	5.70
February	87	66,531,324	3.88	3.19	5.75	7	6,839,882	3.98	3.29	5.75
March	184	121,936,543	4.04	3.23	5.74	13	81,576,637	4.21	3.51	5.71
April	89	73,291,320	3.80	3.16	5.74	6	5,379,860	3.89	3.23	5.73
May	182	123,412,946	3.97	3.20	5.74	13	83,907,116	4.11	3.42	5.70
June	173	114,197,509	3.96	3.20	5.73	12	79,660,695	4.12	3.41	5.70
July	172	114,455,528	3.94	3.17	5.72	12	77,191,178	4.12	3.33	5.67
August	182	117,567,997	3.98	3.19	5.73	13	75,749,369	4.15	3.34	5.71
September	182	112,298,782	4.06	3.26	5.73	13	74,444,946	4.27	3.49	5.70
October	90	69,398,712	3.85	3.21	5.71	4	4,869,867	3.82	3.26	5.69
November	91	67,390,461	3.94	3.27	5.72	4	4,668,723	3.81	3.28	5.72
December	185	116,094,249	4.16	3.32	5.73	13	75,569,039	4.44	3.65	5.66
Average/Total	150	1,213,529,690	3.99	3.23	5.73	10	647,738,729	4.20	3.46	5.69

1/ Includes: Bonner, Franklin, Latah and Lincoln Counties, Idaho; and Cache County, Utah.

2/ Includes: Deschutes County, Oregon; and Siskiyou County, California.

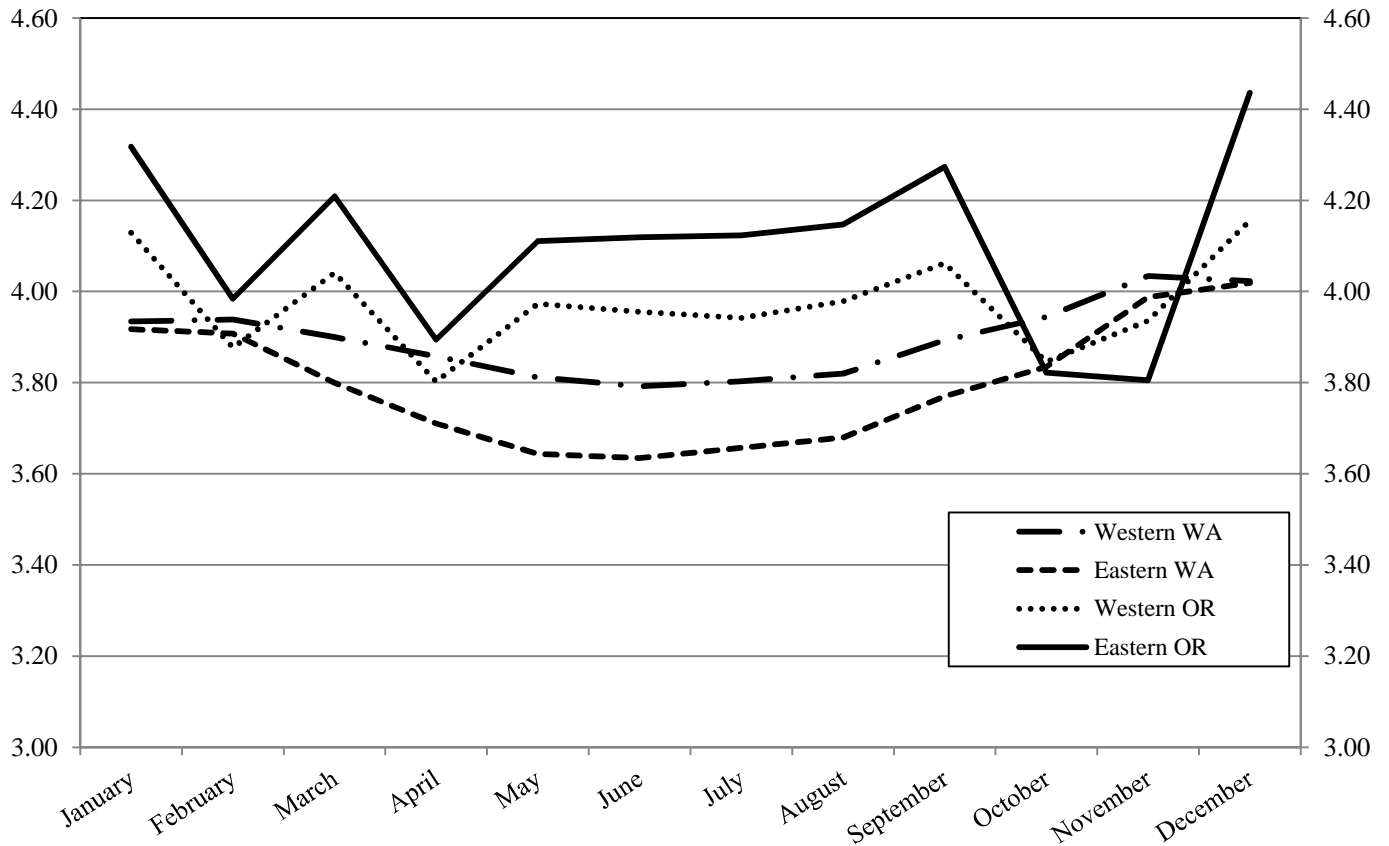
**Table T-3a**  
**Butterfat Tests by Region: 2014**

Month	Pacific Northwest Order Butterfat			
	Western WA	Eastern WA 1/	Western OR 2/	Eastern OR
January	3.93	3.92	4.13	4.32
February	3.94	3.91	3.88	3.98
March	3.90	3.80	4.04	4.21
April	3.86	3.71	3.80	3.89
May	3.81	3.64	3.97	4.11
June	3.79	3.63	3.96	4.12
July	3.80	3.66	3.94	4.12
August	3.82	3.68	3.98	4.15
September	3.89	3.77	4.06	4.27
October	3.94	3.83	3.85	3.82
November	4.03	3.99	3.94	3.81
December	4.02	4.02	4.16	4.44
<b>Average</b>	<b>3.89</b>	<b>3.78</b>	<b>3.99</b>	<b>4.20</b>

1/ Includes: Bonner, Franklin, Latah and Lincoln Counties, Idaho; and Cache County, Utah.

2/ Includes: Deschutes County, Oregon; and Siskiyou County, California.

**Pacific Northwest Order: Butterfat**



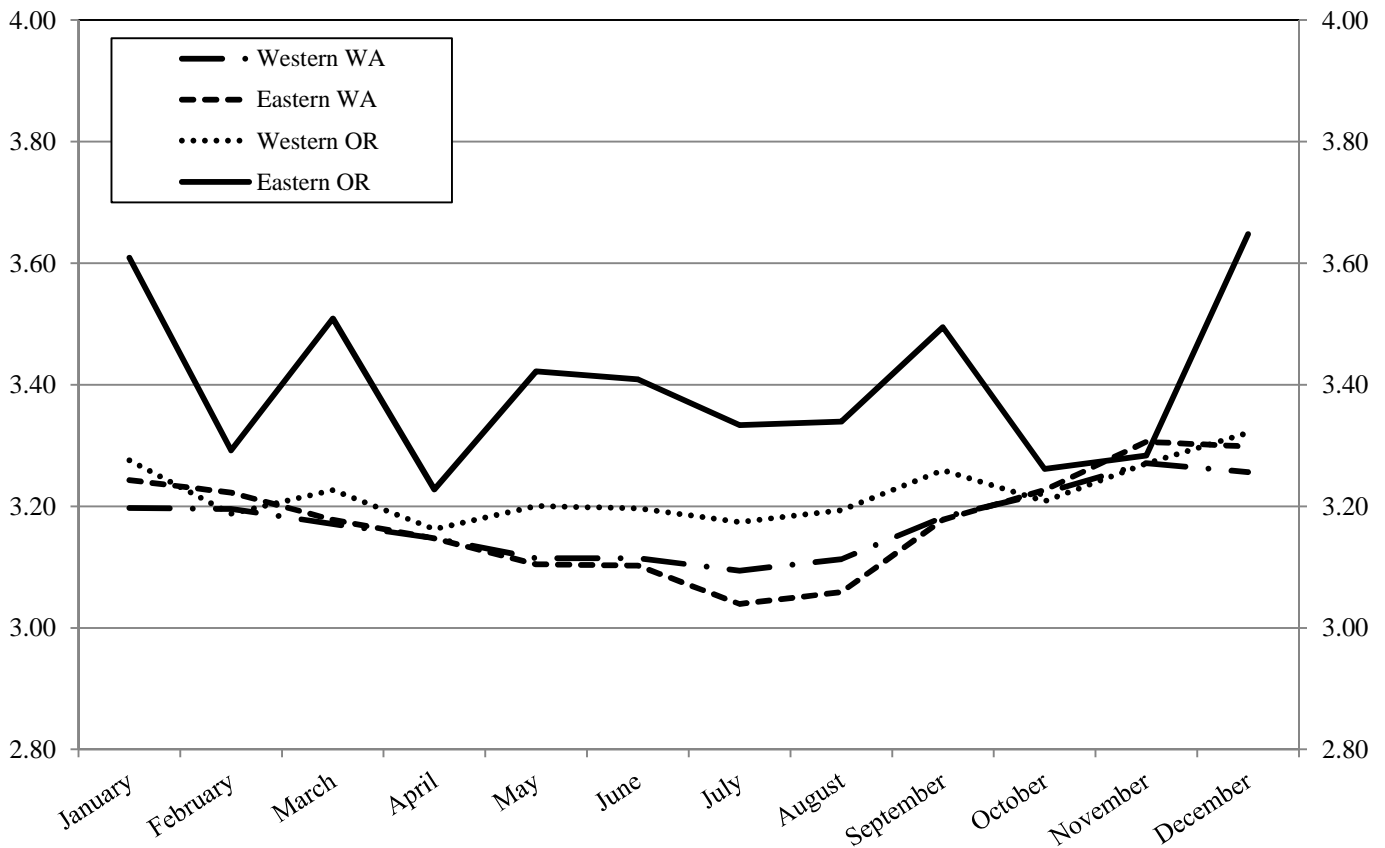
**Table T-3b**  
**Protein Tests by Region: 2014**

Month	Pacific Northwest Order			
	Western WA	Eastern WA 1/	Western OR 2/	Eastern OR
January	3.20	3.24	3.28	3.61
February	3.20	3.22	3.19	3.29
March	3.17	3.18	3.23	3.51
April	3.15	3.15	3.16	3.23
May	3.11	3.10	3.20	3.42
June	3.11	3.10	3.20	3.41
July	3.09	3.04	3.17	3.33
August	3.11	3.06	3.19	3.34
September	3.18	3.18	3.26	3.49
October	3.22	3.23	3.21	3.26
November	3.27	3.31	3.27	3.28
December	3.26	3.30	3.32	3.65
Average	3.17	3.17	3.23	3.46

1/ Includes: Bonner, Franklin, Latah and Lincoln Counties, Idaho; and Cache County, Utah.

2/ Includes: Deschutes County, Oregon; and Siskiyou County, California.

**Pacific Northwest Order: Protein**



**Table T-3c**  
**Other Solids Tests by Region: 2014**

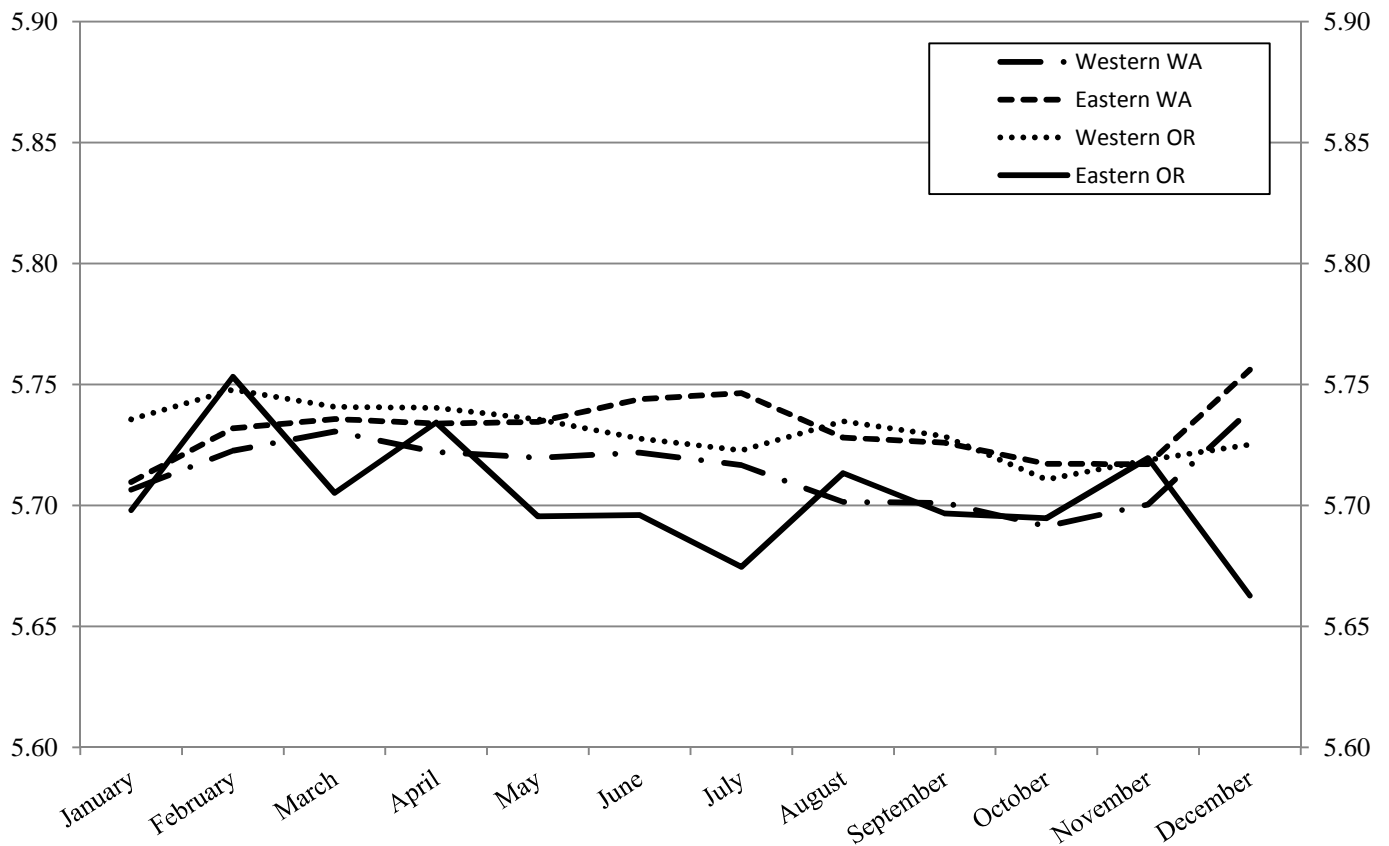
**Pacific Northwest Order**

Month	Other Solids			
	Western WA	Eastern WA 1/	Western OR 2/	Eastern OR
January	5.71	5.71	5.74	5.70
February	5.72	5.73	5.75	5.75
March	5.73	5.74	5.74	5.71
April	5.72	5.73	5.74	5.73
May	5.72	5.73	5.74	5.70
June	5.72	5.74	5.73	5.70
July	5.72	5.75	5.72	5.67
August	5.70	5.73	5.73	5.71
September	5.70	5.73	5.73	5.70
October	5.69	5.72	5.71	5.69
November	5.70	5.72	5.72	5.72
December	5.74	5.76	5.73	5.66
<b>Average</b>	<b>5.71</b>	<b>5.73</b>	<b>5.73</b>	<b>5.69</b>

1/ Includes: Bonner, Franklin, Latah and Lincoln Counties, Idaho; and Cache County, Utah.

2/ Includes: Deschutes County, Oregon; and Siskiyou County, California.

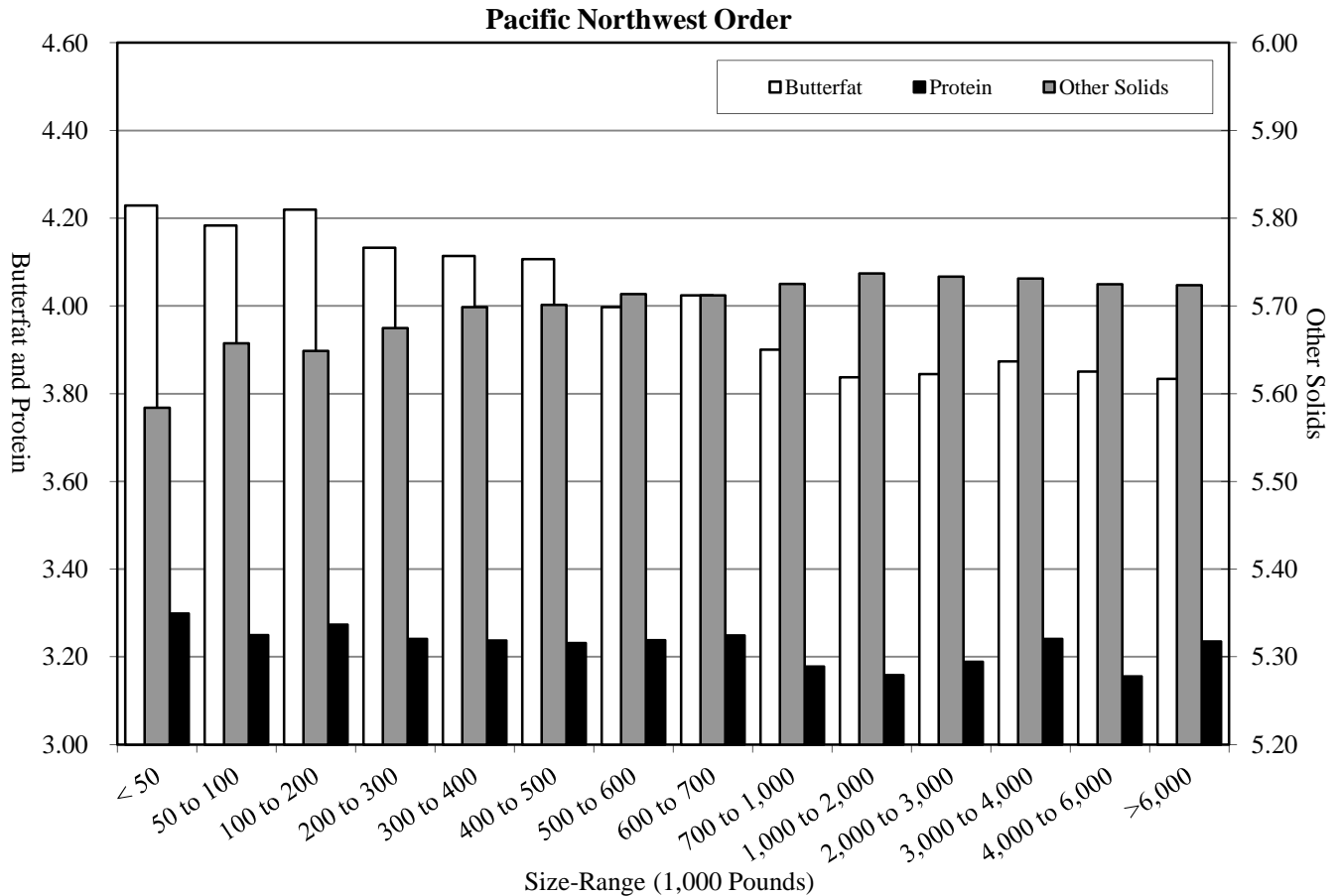
**Pacific Northwest Order: Other Solids**





**Table T-4**  
**Component Tests by Size-Range of Producer Milk Deliveries: 2014**

Size-Range (Pounds)		No. of Observations	Butterfat	Protein	Other Solids
Equal to or more than	Less than				
0	50,000	245	4.23	3.30	5.58
50,000	100,000	408	4.18	3.25	5.66
100,000	200,000	881	4.22	3.27	5.65
200,000	300,000	737	4.13	3.24	5.67
300,000	400,000	384	4.11	3.24	5.70
400,000	500,000	344	4.11	3.23	5.70
500,000	600,000	353	4.00	3.24	5.71
600,000	700,000	328	4.02	3.25	5.71
700,000	1,000,000	599	3.90	3.18	5.72
1,000,000	2,000,000	1,039	3.84	3.16	5.74
2,000,000	3,000,000	525	3.84	3.19	5.73
3,000,000	4,000,000	164	3.87	3.24	5.73
4,000,000	6,000,000	206	3.85	3.16	5.72
6,000,000		199	3.83	3.23	5.72
Total/Average		6,412	3.88	3.20	5.72

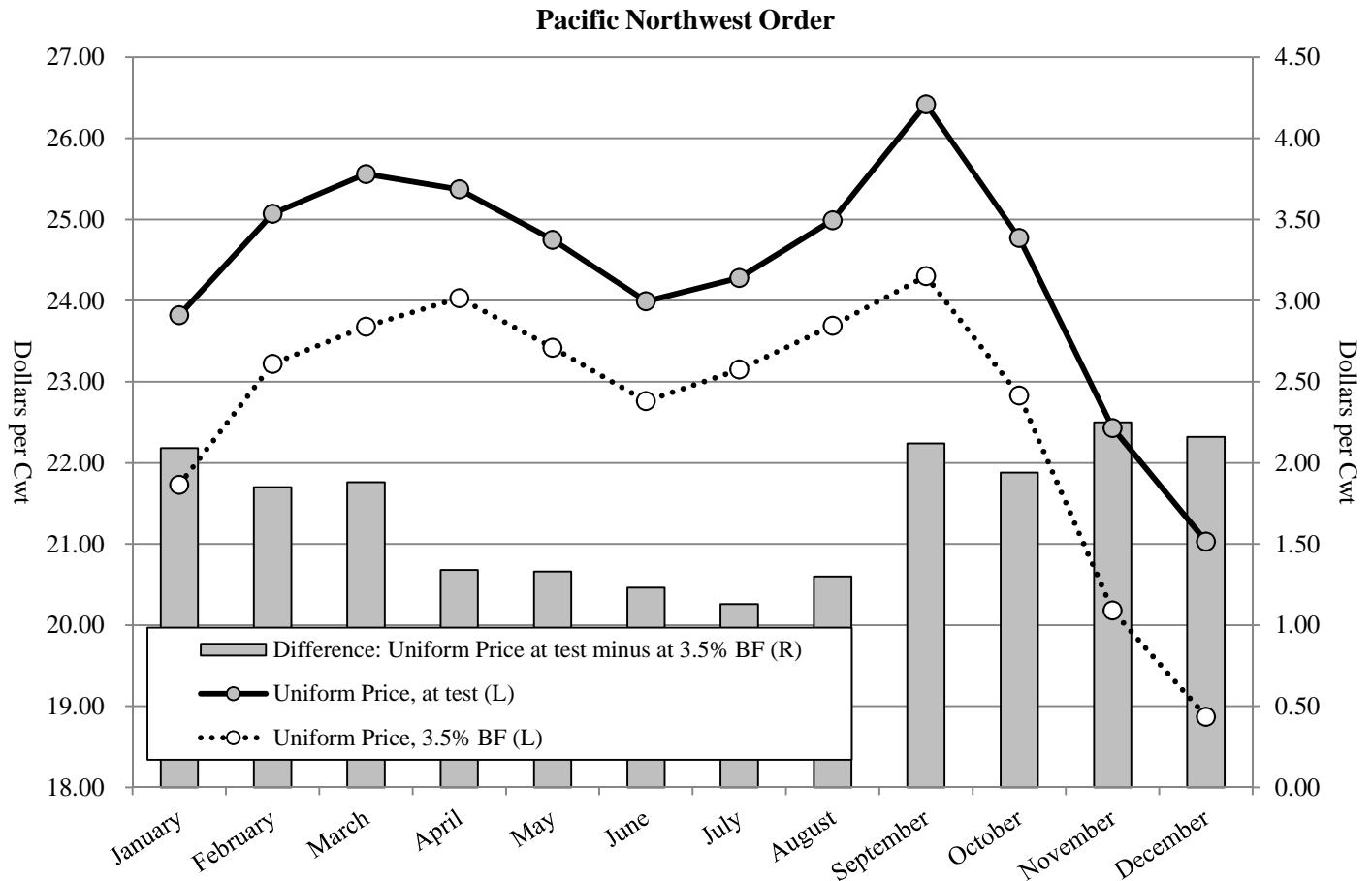


**Table T-5  
 Producer Prices and Component Tests by Month: 2014**

**Pacific Northwest Order**

Month	A		B		Difference (B - A)	Butterfat		Protein		Other Solids		Producer Price Differential 1/ - \$ / Cwt -
	Uniform Price, 3.5% BF	Uniform Price, at test	Uniform Price, at test	Difference		- \$ / Lb -	- % -	- \$ / Lb -	- % -	- \$ / Lb -	- % -	
January	21.73	23.82	23.82	2.09	1.7874	4.00	4.1870	3.28	0.4155	5.71	0.58	
February	23.22	25.07	25.07	1.85	2.0109	3.92	4.6044	3.21	0.4453	5.73	(0.13)	
March	23.68	25.56	25.56	1.88	2.0402	3.91	4.5172	3.22	0.4700	5.73	0.35	
April	24.03	25.37	25.37	1.34	2.1207	3.77	4.7089	3.15	0.4926	5.73	(0.28)	
May	23.42	24.75	24.75	1.33	2.2721	3.79	3.9553	3.16	0.4897	5.73	0.85	
June	22.76	23.99	23.99	1.23	2.4413	3.77	3.3437	3.15	0.4942	5.73	1.40	
July	23.15	24.28	24.28	1.13	2.6349	3.79	3.1798	3.10	0.5046	5.73	1.55	
August	23.69	24.99	24.99	1.30	2.8448	3.81	3.1496	3.12	0.5036	5.72	1.44	
September	24.30	26.42	26.42	2.12	3.2467	3.90	3.4991	3.22	0.4876	5.72	(0.30)	
October	22.83	24.77	24.77	1.94	2.8507	3.88	3.7362	3.22	0.4670	5.71	(0.99)	
November	20.18	22.43	22.43	2.25	2.2011	4.00	3.9018	3.29	0.4505	5.71	(1.76)	
December	18.87	21.03	21.03	2.16	2.0991	4.09	2.7387	3.33	0.3996	5.74	1.05	
Average	22.70	24.39	24.39	1.69	2.3836	3.88	3.7449	3.20	0.4698	5.72	0.47	

1/ The producer price differentials for the Pacific Northwest Order are subject to applicable location adjustments.



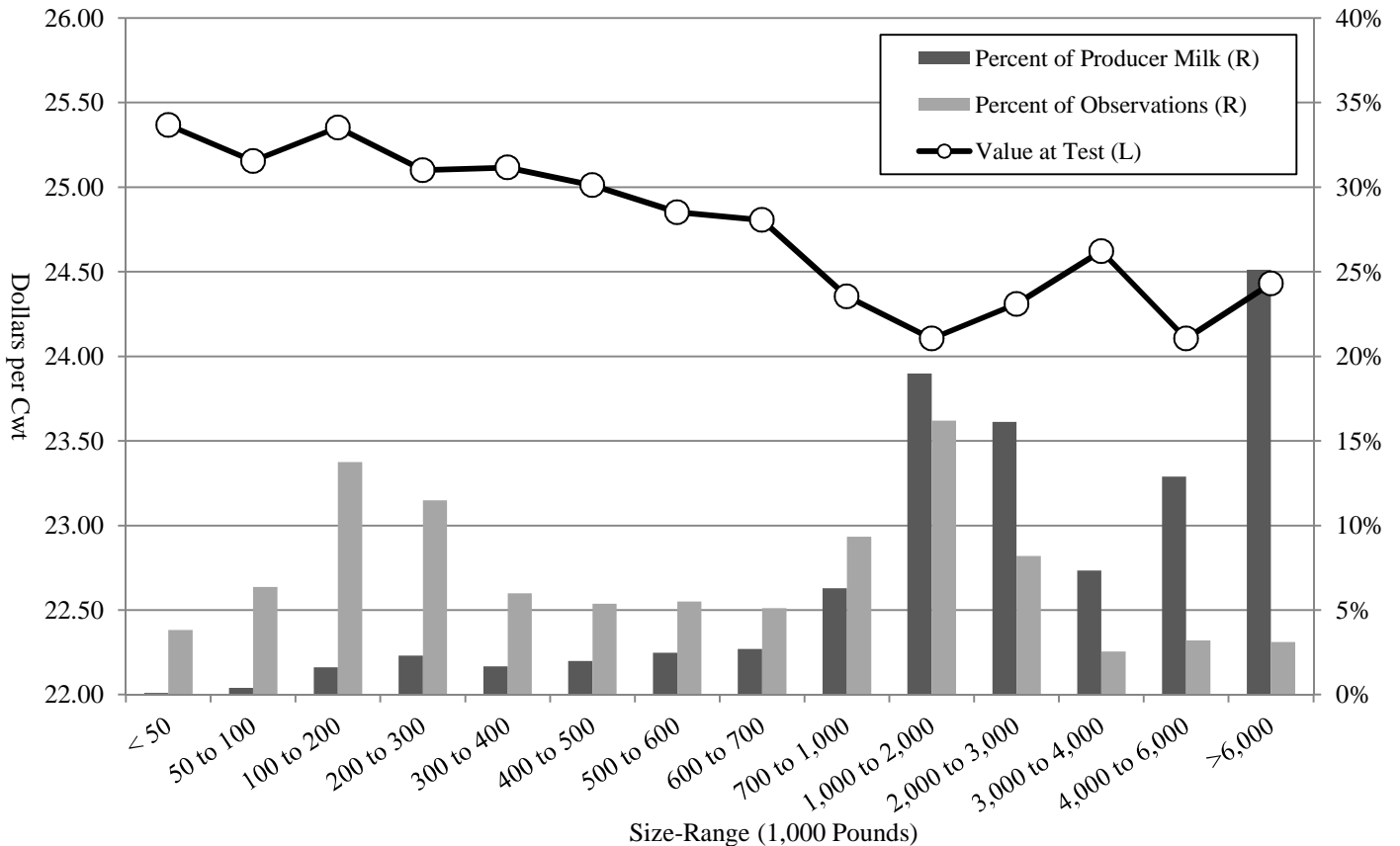
**Table T-6  
 Producer Milk and Value by Size-Range of Producer Milk Deliveries: 2014**

**Pacific Northwest Order**

Size-Range		Producer Milk	Percent of Producer Milk	No. of Observations	Percent of Observations	Producer Milk Value at Test 1/	Value at Test
Equal to or more than	Less than						
- - Pounds - -		- Pounds -	- % -		- % -	- Dollars -	- \$ / Cwt -
0	50,000	7,906,294	0.1%	245	3.8%	2,005,614.66	25.37
50,000	100,000	31,097,531	0.4%	408	6.4%	7,822,469.84	25.15
100,000	200,000	126,532,214	1.6%	881	13.7%	32,078,715.96	25.35
200,000	300,000	181,573,961	2.3%	737	11.5%	45,574,479.53	25.10
300,000	400,000	131,768,067	1.7%	384	6.0%	33,094,626.57	25.12
400,000	500,000	155,841,585	2.0%	344	5.4%	38,977,537.06	25.01
500,000	600,000	194,484,778	2.5%	353	5.5%	48,331,574.59	24.85
600,000	700,000	211,772,358	2.7%	328	5.1%	52,531,177.25	24.81
700,000	1,000,000	494,342,764	6.3%	599	9.3%	120,391,750.27	24.35
1,000,000	2,000,000	1,491,161,096	19.0%	1,039	16.2%	359,438,018.66	24.10
2,000,000	3,000,000	1,266,944,483	16.1%	525	8.2%	307,984,486.20	24.31
3,000,000	4,000,000	576,924,053	7.3%	164	2.6%	142,046,729.83	24.62
4,000,000	6,000,000	1,013,100,353	12.9%	206	3.2%	244,203,278.38	24.10
6,000,000		1,973,508,607	25.1%	199	3.1%	482,119,862.50	24.43
<b>Total/Average</b>		<b>7,856,958,144</b>	<b>100.0%</b>	<b>6,412</b>	<b>100.0%</b>	<b>1,916,600,321.29</b>	<b>24.39</b>

1/ Based on Federal order producer minimum prices. Producer prices are subject to location adjustments.

**Pacific Northwest Order**

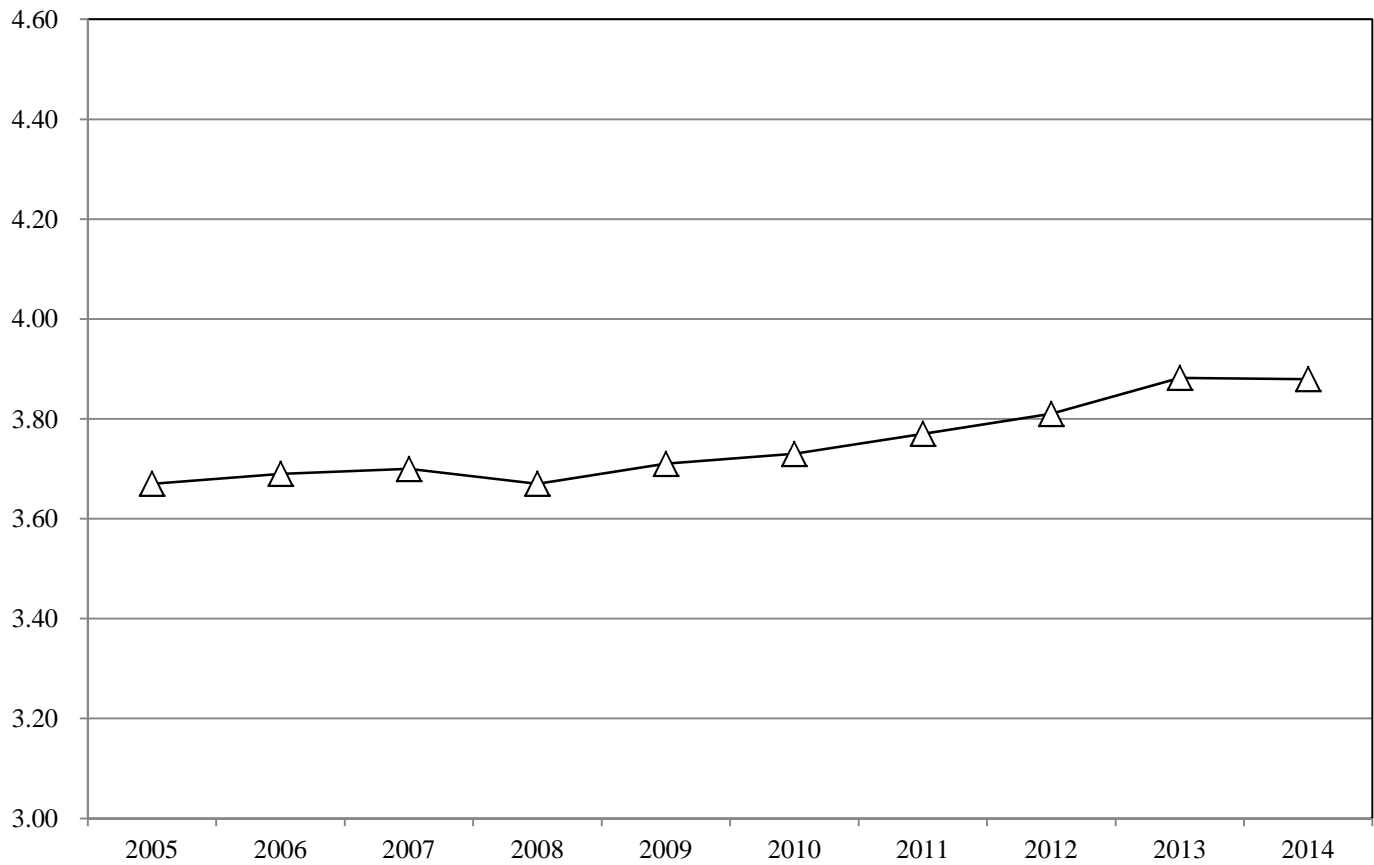


**Table T-7a**  
**Long Term Trends in Component Tests, Butterfat: 2005-2014**

**Pacific Northwest Order**

Year	Average No. of Producers	Test	Standard Deviation	Minimum	Maximum
2005	817	3.67	0.37	2.36	5.57
2006	779	3.69	0.36	2.49	5.47
2007	705	3.70	0.39	2.60	5.86
2008	610	3.67	0.39	2.60	5.65
2009	624	3.71	0.41	2.62	5.83
2010	632	3.73	0.43	2.74	6.10
2011	610	3.77	0.43	2.70	6.21
2012	532	3.81	0.42	2.78	6.20
2013	568	3.88	0.44	2.84	6.07
2014	534	3.88	0.45	2.72	6.22
<b>10 year Simple Average</b>					
	641	3.75	0.41	2.65	5.92

**Pacific Northwest Order: Butterfat**

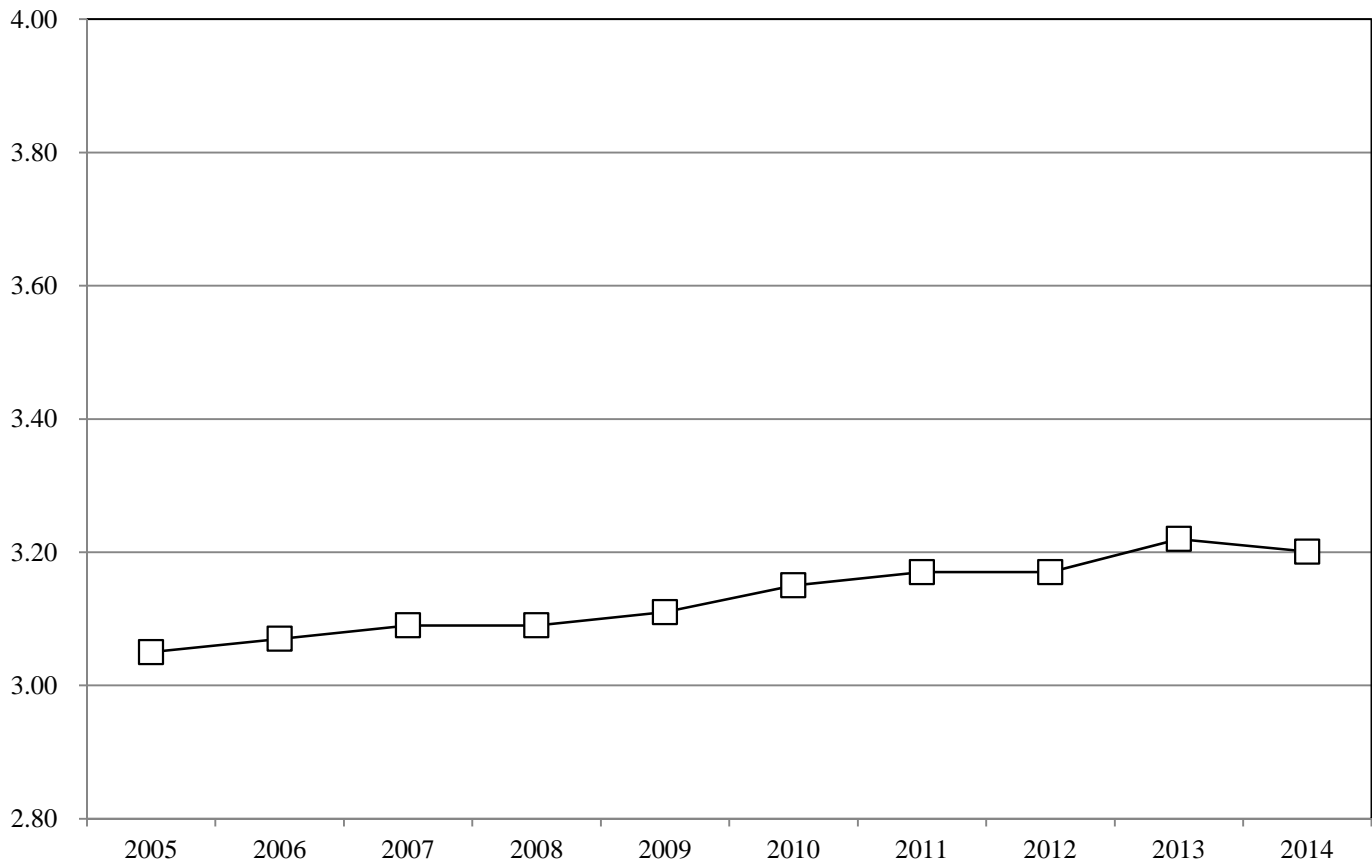


**Table T-7b**  
**Long Term Trends in Component Tests, Protein: 2005-2014**

**Pacific Northwest Order**

Year	Average No. of Producers	Test	Standard Deviation	Minimum	Maximum
2005	817	3.05	0.20	2.55	4.14
2006	779	3.07	0.20	2.21	4.09
2007	705	3.09	0.21	2.17	4.42
2008	610	3.09	0.21	2.58	4.28
2009	624	3.11	0.22	2.63	4.09
2010	632	3.15	0.22	2.13	4.40
2011	610	3.17	0.22	2.58	4.43
2012	532	3.17	0.22	2.47	4.31
2013	568	3.22	0.22	2.58	4.30
2014	534	3.20	0.22	2.60	4.56
<b>10 year Simple Average</b>					
	641	3.13	0.21	2.45	4.30

**Pacific Northwest Order: Protein**

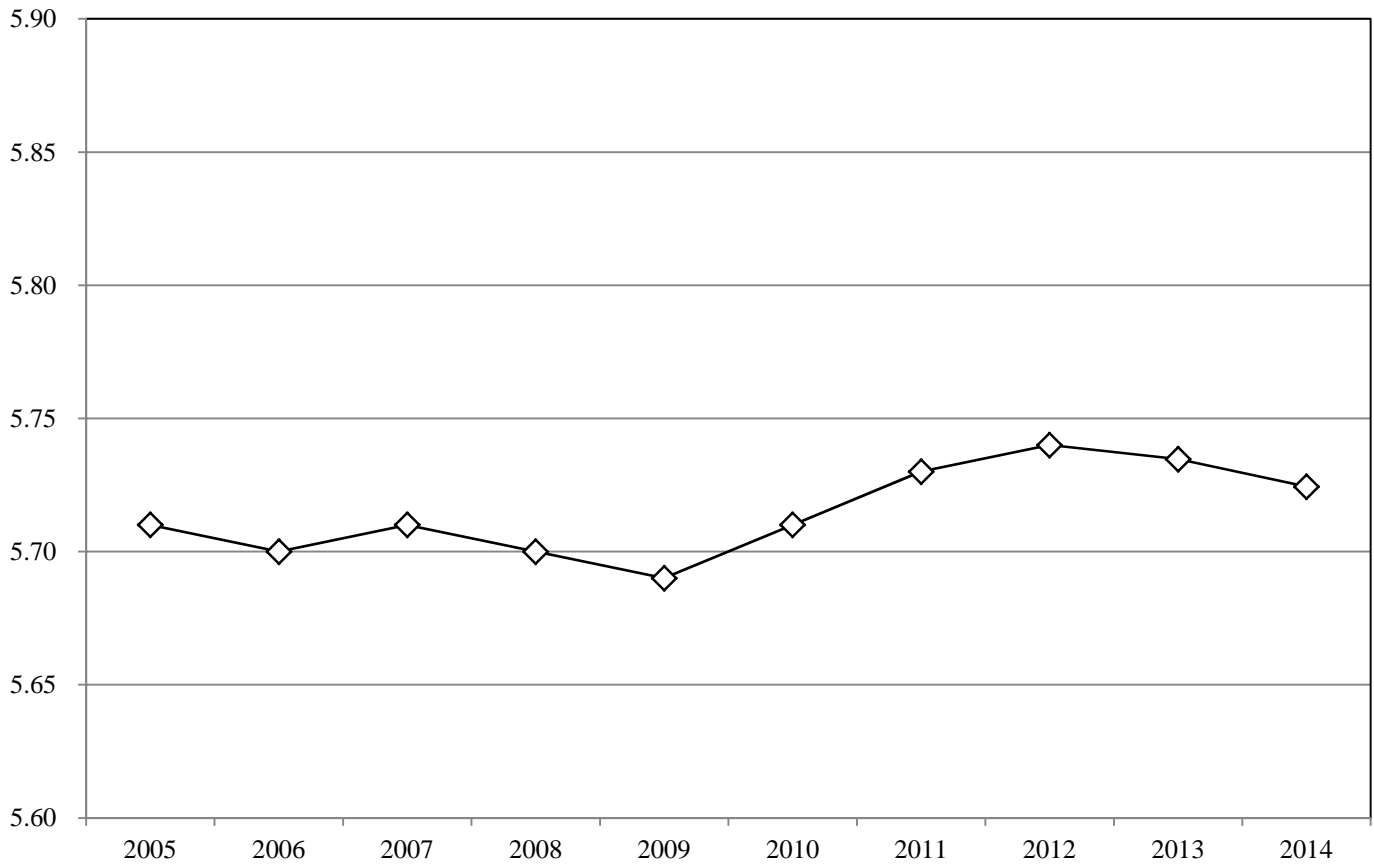


**Table T-7c**  
**Long Term Trends in Component Tests, Other Solids: 2005-2014**

**Pacific Northwest Order**

Year	Average No. of Producers	Test	Standard Deviation	Minimum	Maximum
2005	817	5.71	0.10	4.23	5.95
2006	779	5.70	0.11	4.84	6.15
2007	705	5.71	0.09	4.78	5.93
2008	610	5.70	0.09	4.86	5.99
2009	624	5.69	0.09	4.96	5.87
2010	632	5.71	0.09	4.71	5.92
2011	610	5.73	0.09	4.86	6.01
2012	532	5.74	0.09	4.62	5.95
2013	568	5.73	0.08	4.67	5.97
2014	534	5.72	0.08	4.78	5.91
<b>10 year Simple Average</b>	<b>641</b>	<b>5.71</b>	<b>0.09</b>	<b>4.73</b>	<b>5.97</b>

**Pacific Northwest Order: Other Solids**



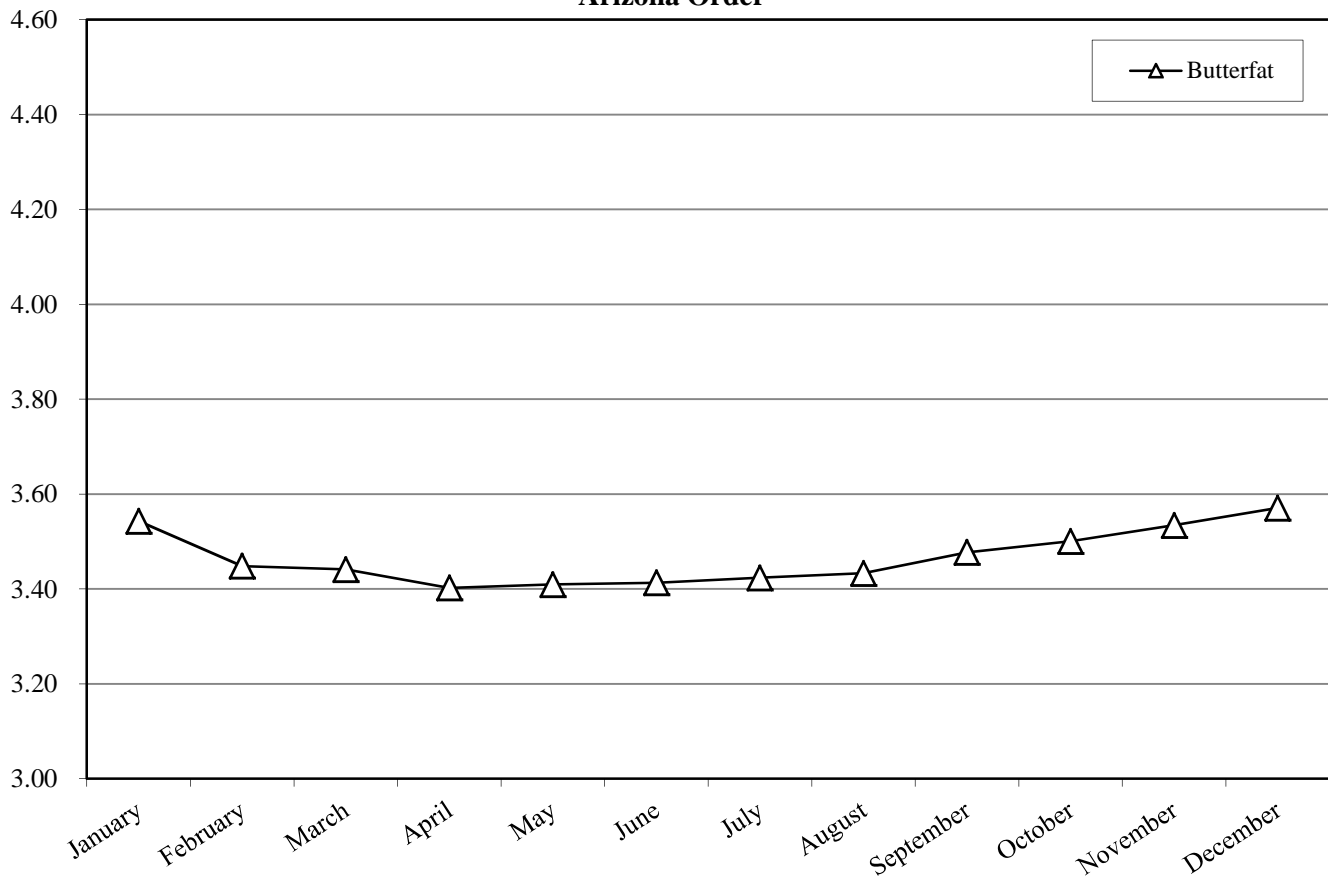
**Table T-8**

**Number of Producers, Producer Milk, Component Tests and Standard Deviations: 2014**

**Arizona Order**

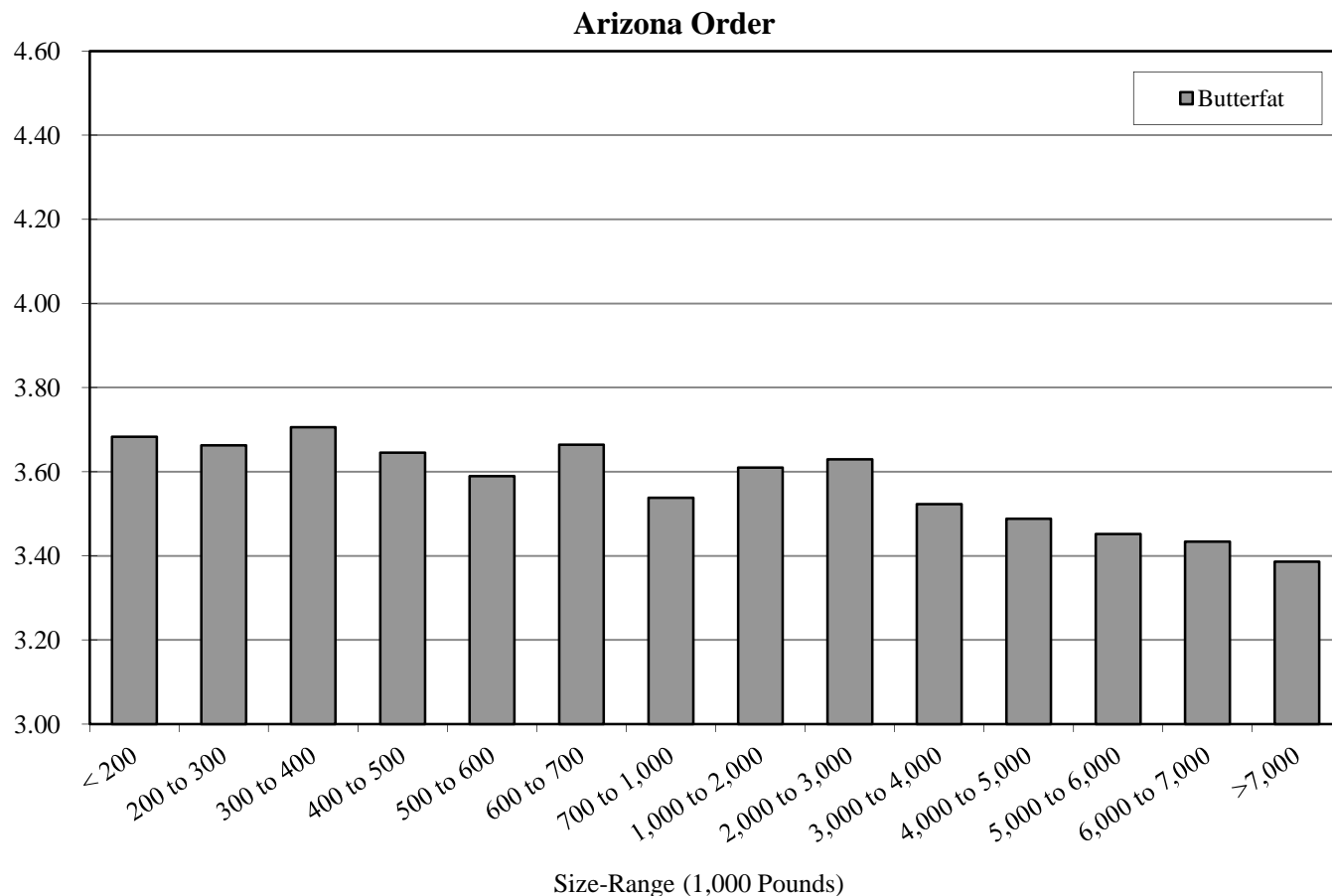
Month	No. of Producers	Producer Milk	Butterfat	
			Test	Standard Deviation
January	92	415,936,349	3.54	0.31
February	91	390,466,338	3.45	0.32
March	93	451,950,826	3.44	0.30
April	91	419,790,454	3.40	0.30
May	94	450,842,574	3.41	0.29
June	91	407,213,014	3.41	0.29
July	91	390,191,450	3.42	0.28
August	94	385,658,019	3.43	0.28
September	92	340,308,360	3.48	0.29
October	92	366,976,261	3.50	0.31
November	92	372,320,850	3.53	0.33
December	92	408,795,575	3.57	0.34
<b>Average/Total</b>	<b>92</b>	<b>4,800,450,070</b>	<b>3.47</b>	<b>0.31</b>

**Arizona Order**



**Table T-9**  
**Component Tests by Size-Range of Producer Milk Deliveries: 2014**

Size-Range (Pounds)		No. of Observations	Butterfat
Equal to or more than	Less than		
0	200,000	24	3.68
200,000	300,000	5	3.66
300,000	400,000	3	3.71
400,000	500,000	5	3.65
500,000	600,000	7	3.59
600,000	700,000	7	3.66
700,000	1,000,000	60	3.54
1,000,000	2,000,000	201	3.61
2,000,000	3,000,000	209	3.63
3,000,000	4,000,000	117	3.52
4,000,000	5,000,000	114	3.49
5,000,000	6,000,000	127	3.45
6,000,000	7,000,000	66	3.43
7,000,000		160	3.39
Total/Average		1,105	3.47



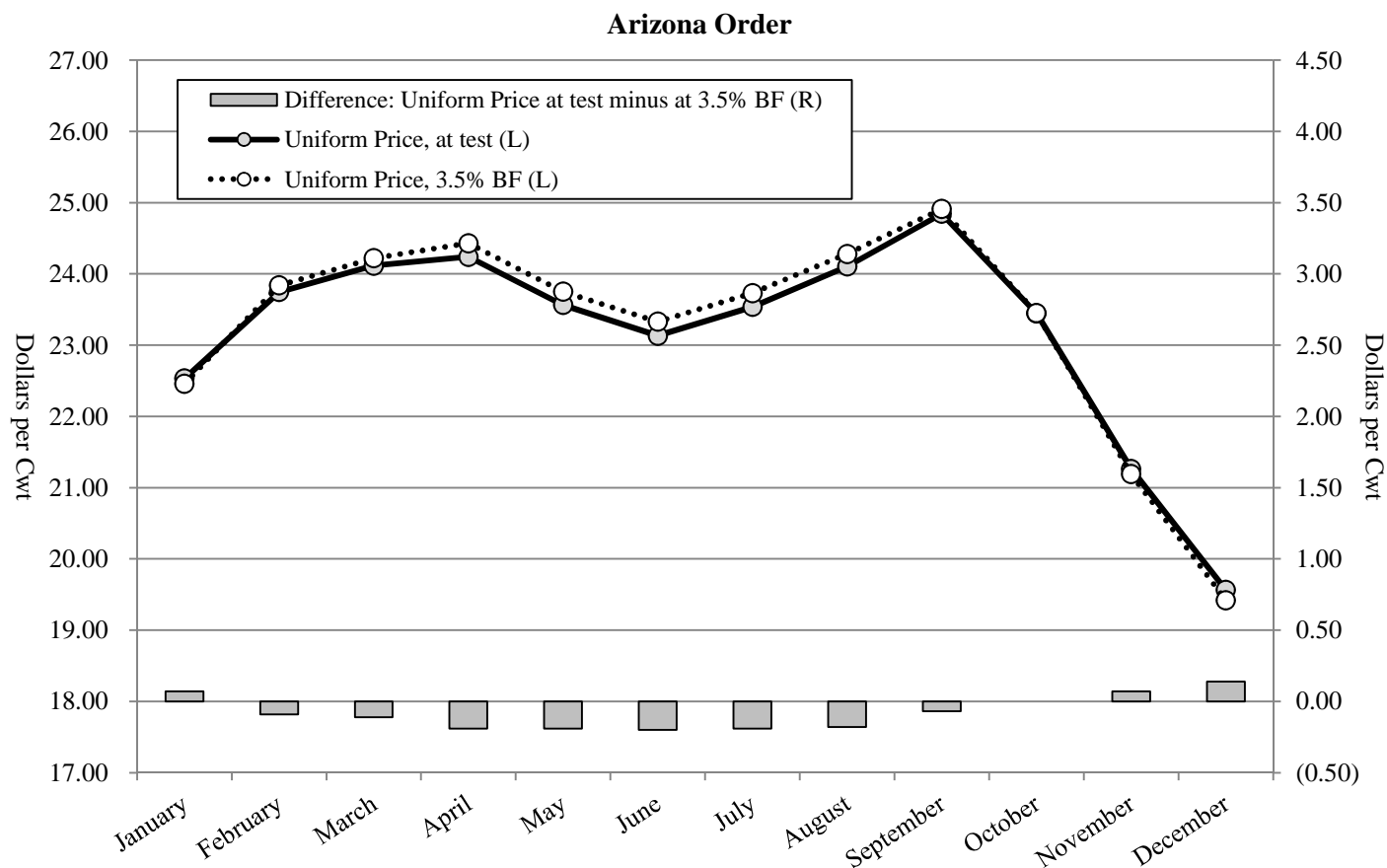


**Table T-10**  
**Producer Prices and Component Tests by Month: 2014**

**Arizona Order**

Month	A		B		Difference		Butterfat 1/		Skim 1/	
	Uniform Price, 3.5% BF	Uniform Price, at test	(B - A)							
	- - - - \$ / Cwt - - - -			- \$ / Lb -	- % -		- \$ / Cwt -	- % -		
January	22.46	22.53	0.07	1.7916	3.54	16.78	96.46			
February	23.84	23.75	(0.09)	1.9753	3.45	17.54	96.55			
March	24.22	24.11	(0.11)	2.0440	3.44	17.69	96.56			
April	24.43	24.24	(0.19)	2.1103	3.40	17.66	96.60			
May	23.75	23.56	(0.19)	2.2653	3.41	16.40	96.59			
June	23.33	23.13	(0.20)	2.4167	3.41	15.41	96.59			
July	23.73	23.54	(0.19)	2.6101	3.42	15.12	96.58			
August	24.28	24.10	(0.18)	2.8161	3.43	14.95	96.57			
September	24.91	24.84	(0.07)	3.1641	3.48	14.34	96.52			
October	23.45	23.45	0.00	2.9077	3.50	13.75	96.50			
November	21.19	21.26	0.07	2.3672	3.53	13.37	96.47			
December	19.42	19.56	0.14	2.1194	3.57	12.44	96.43			
Average	23.25	23.17	(0.08)	2.3589	3.47	15.53	96.53			

1/ The producer prices for the Arizona Order are subject to applicable location adjustments.



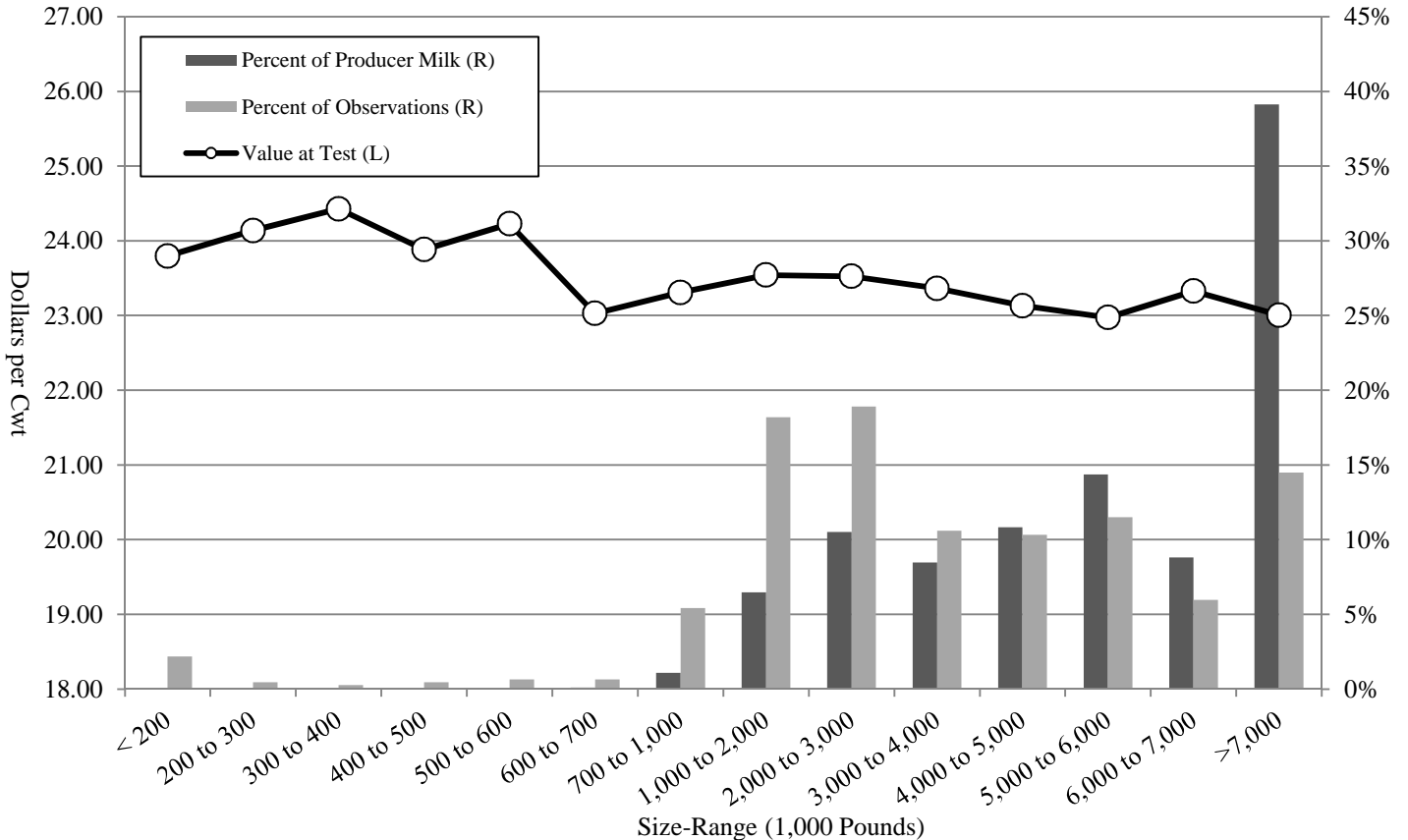
**Table T-11  
 Producer Milk and Value by Size-Range of Producer Milk Deliveries: 2014**

**Arizona Order**

Size-Range		Producer Milk	Percent of Producer Milk	No. of Observations	Percent of Observations	Producer Milk Value at Test 1/	Value at Test
Equal to or more than	Less than						
- - - Pounds - - -		- Pounds -	- % -		- % -	- Dollars -	- \$ / Cwt -
0	200,000	2,566,364	0.05%	24	2.17%	610,675.52	23.80
200,000	300,000	1,216,340	0.03%	5	0.45%	293,578.35	24.14
300,000	400,000	1,011,240	0.02%	3	0.27%	247,013.50	24.43
400,000	500,000	2,241,260	0.05%	5	0.45%	535,270.59	23.88
500,000	600,000	3,789,941	0.08%	7	0.63%	918,174.62	24.23
600,000	700,000	4,446,224	0.09%	7	0.63%	1,023,911.38	23.03
700,000	1,000,000	52,037,875	1.08%	60	5.43%	12,128,934.60	23.31
1,000,000	2,000,000	310,987,630	6.48%	201	18.19%	73,213,126.48	23.54
2,000,000	3,000,000	505,038,103	10.52%	209	18.91%	118,805,938.84	23.52
3,000,000	4,000,000	406,881,490	8.48%	117	10.59%	95,059,139.44	23.36
4,000,000	5,000,000	519,482,678	10.82%	114	10.32%	120,165,998.91	23.13
5,000,000	6,000,000	689,527,942	14.36%	127	11.49%	158,402,328.69	22.97
6,000,000	7,000,000	423,310,102	8.82%	66	5.97%	98,742,349.39	23.33
7,000,000		1,877,912,881	39.12%	160	14.48%	432,015,075.25	23.01
<b>Total/Average</b>		<b>4,800,450,070</b>	<b>100.00%</b>	<b>1,105</b>	<b>100.00%</b>	<b>1,112,161,515.56</b>	<b>23.17</b>

1/ Based on Federal order minimum producer prices. Producer prices are subject to location adjustments.

**Arizona Order**



**Table T-12**  
**Long Term Trends in Component Tests, Butterfat: 2005-2014**

**Arizona Order**

Year	Average No. of Producers	Test	Standard Deviation	Minimum	Maximum
2005	87	3.59	0.33	2.62	4.92
2006	92	3.59	0.32	2.94	4.88
2007	93	3.59	0.32	2.62	4.86
2008	99	3.56	0.33	2.87	5.07
2009	97	3.49	0.33	2.59	5.60
2010	96	3.50	0.36	2.36	5.45
2011	100	3.55	0.33	2.48	4.99
2012	95	3.55	0.33	2.98	5.46
2013	92	3.52	0.32	2.90	5.09
2014	92	3.47	0.31	2.91	4.94
10 year Simple Average	94	3.54	0.33	2.73	5.13

**Arizona Order: Butterfat**

