

UNITED STATES DEPARTMENT OF AGRICULTURE

Agricultural Marketing Service

Dairy Programs

FEDERAL MILK ORDERS 124 & 131

1930-220th Street SE, Ste. 102
Bothell, WA 98021
Phone: (425) 487-6009
Fax: (425) 487-2775
Email: fmmsattle@fmmsattle.com

4835 E. Cactus Road, Ste. 365
Scottsdale, AZ 85254
Phone: (602) 547-2909
Fax: (602) 547-2906

**OVERVIEW OF COMPONENT TESTS OF PRODUCER MILK
AT THE FARM LEVEL**

**PACIFIC NORTHWEST AND ARIZONA
FEDERAL MILK MARKETING ORDERS**

2015

March 2016

The U.S. Department of Agriculture (USDA) prohibits discrimination in all its programs and activities on the basis of race, color, national origin, age, disability, and where applicable, sex, marital status, familial status, parental status, religion, sexual orientation, genetic information, political beliefs, reprisal, or because all or part of an individual's income is derived from any public assistance program. (Not all prohibited bases apply to all programs.) Persons with disabilities who require alternative means for communication of program information (Braille, large print, audiotape, etc.) should contact USDA's TARGET Center at (202) 720-2600 (voice and TDD). To file a complaint of discrimination, write to USDA, Director, Office of Civil Rights, 1400 Independence Avenue, S.W., Washington, D.C. 20250-9410, or call (800) 795-3272 (voice) or (202) 720-6382 (TDD). USDA is an equal opportunity provider and employer.

OVERVIEW OF COMPONENT TESTS OF PRODUCER MILK AT THE FARM LEVEL

PACIFIC NORTHWEST AND ARIZONA FEDERAL MILK MARKETING ORDERS

2015

The following tables provide an overview of component tests of producer milk pooled on the Pacific Northwest (FO 124) and Arizona (FO 131) Federal Milk Marketing Orders. The tables summarize average tests by order, month, year, region, size-range of production, and long term trends. Producer milk values are also calculated using Federal order minimum producer prices for the respective orders at 3.5% butterfat and at test. All test and value averages are weighted averages.

The farm level data included in these tables comprises all producers and producer milk pooled on the Pacific Northwest and Arizona Orders. The data was collected from producer payrolls submitted by handlers to the market administrator's office. Components available for the Pacific Northwest Order are butterfat, protein, and other solids. Other solids are lactose and minerals. The component for the Arizona Order is butterfat. In certain months, milk production that historically qualified to be pooled on an order may not have been pooled due to price relationships. This historically eligible producer milk is **not** included in this analysis. Large changes in producer numbers and producer milk typically indicate those months when milk was not pooled due to price relationships. Small differences may be evident between published pool information and the data shown in this overview due to the use of partially audited payroll data.

The orders' milksheds were divided into different regions when possible. The Pacific Northwest Order's milkshed was divided into four regions representing each of Oregon and Washington divided by the Cascade Mountain Range. In Oregon and Washington, the west side of the Cascade Mountain Range has more precipitation and is characterized by a milder climate than the eastern side of the states. The region east of the Cascade Mountain Range has a drier climate with warmer summers and colder winters. Arizona is very dry year round with little precipitation and relatively high temperatures where most milk is produced. Data from a small number of counties of other states are included in the data for the defined regions based on order association, relative proximity, and/or to prevent the release of restricted data.

The regions are:

- Western Washington
- Eastern Washington (& Idaho and Utah)
- Western Oregon (& Northern California)
- Eastern Oregon
- Arizona (& Southern California and Texas)

An index of Tables grouped by Federal order can be found on page ii.

Index of Tables

Page
Number

Pacific Northwest Order (FO 124)

Tables:	T-1	Number of Producers, Producer Milk, Component Tests and Standard Deviations: 2015	1
	T-2	Number of Producers, Producer Milk and Component Tests by Region: 2015	2
	T-3a	Butterfat Tests by Region: 2015	3
	T-3b	Protein Tests by Region: 2015	4
	T-3c	Other Solids Tests by Region: 2015	5
	T-4	Component Tests by Size-Range of Producer Milk Deliveries: 2015	6
	T-5	Producer Prices and Component Tests by Month: 2015	7
	T-6	Producer Milk and Value by Size-Range of Producer Milk Deliveries: 2015	8
	T-7a	Long Term Trends in Component Tests, Butterfat: 2006-2015	9
	T-7b	Long Term Trends in Component Tests, Protein: 2006-2015	10
	T-7c	Long Term Trends in Component Tests, Other Solids: 2006-2015	11

Arizona Order (FO 131)

T-8	Number of Producers, Producer Milk, Component Tests and Standard Deviations: 2015	12
T-9	Component Tests by Size-Range of Producer Milk Deliveries: 2015	13
T-10	Producer Prices and Component Tests by Month: 2015	14
T-11	Producer Milk and Value by Size-Range of Producer Milk Deliveries: 2015	15
T-12	Long Term Trends in Component Tests, Butterfat: 2006-2015	16

Table T-1
Number of Producers, Producer Milk, Component Tests and Standard Deviations: 2015

Pacific Northwest Order								
Month	No. of Producers	Producer Milk	Butterfat		Protein		Other Solids	
			Test	Standard Deviation	Test	Standard Deviation	Test	Standard Deviation
January	469	580,046,841	3.96	0.44	3.20	0.21	5.75	0.09
February	432	454,192,447	3.87	0.41	3.15	0.20	5.74	0.08
March	431	499,179,089	3.87	0.41	3.16	0.20	5.73	0.08
April	422	461,510,772	3.87	0.41	3.15	0.20	5.72	0.08
May	466	599,727,946	3.78	0.39	3.12	0.20	5.74	0.07
June	445	460,766,179	3.77	0.39	3.08	0.20	5.76	0.08
July	455	461,336,912	3.74	0.38	3.05	0.19	5.75	0.07
August	457	455,451,264	3.77	0.39	3.10	0.20	5.73	0.08
September	458	473,787,351	3.85	0.42	3.18	0.20	5.73	0.08
October	577	736,259,376	4.00	0.48	3.29	0.23	5.71	0.09
November	570	711,210,346	4.12	0.51	3.36	0.24	5.75	0.10
December	570	738,588,980	4.14	0.52	3.34	0.25	5.73	0.09
Average/Total	479	6,632,057,503	3.92	0.46	3.20	0.23	5.73	0.09

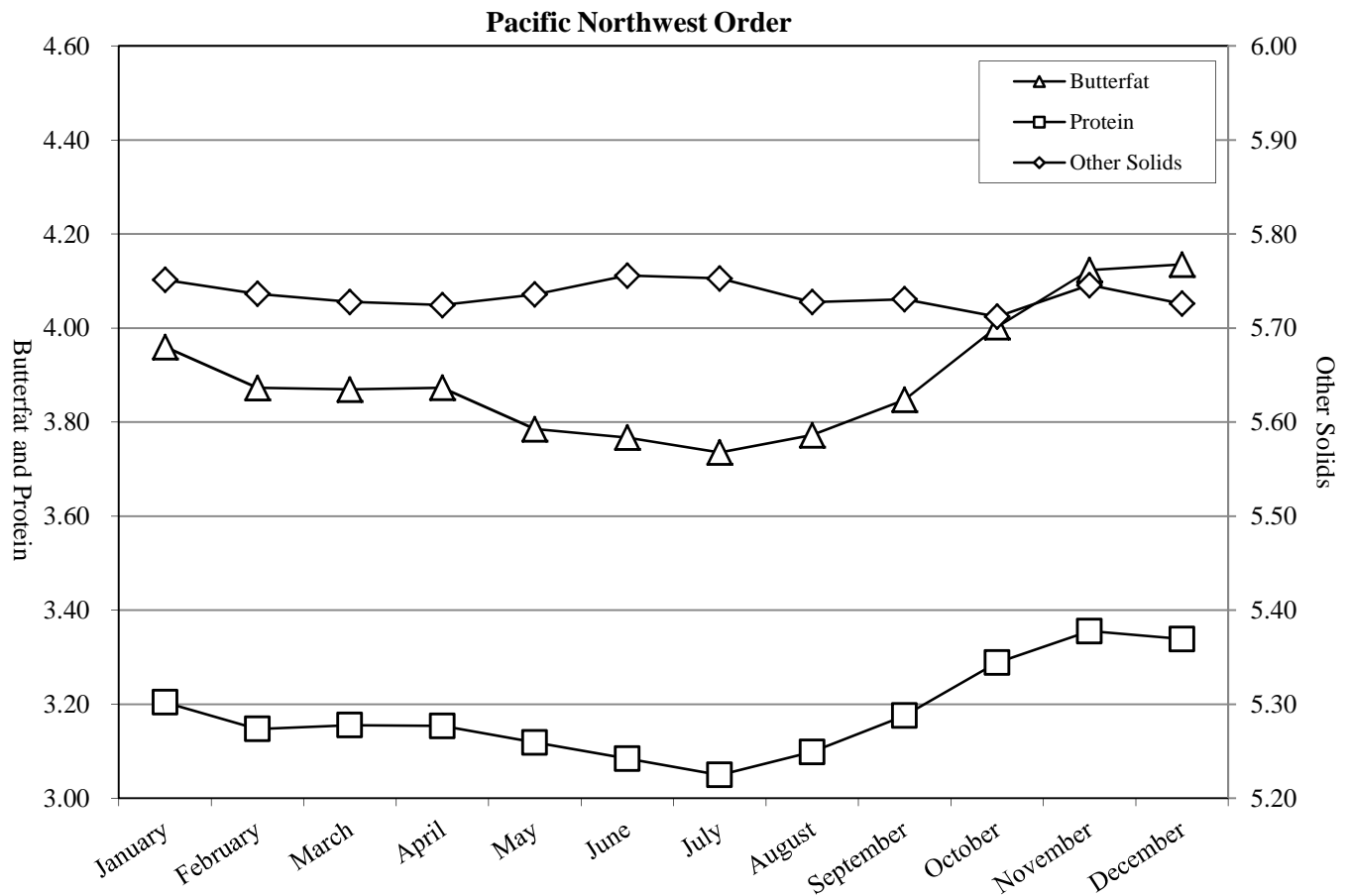


Table T-2**Number of Producers, Producer Milk and Component Tests by Region: 2015****Pacific Northwest Order**

Month	Western Washington					Eastern Washington 1/				
	No. of Producers	Producer Milk	Butterfat	Protein	OS	No. of Producers	Producer Milk	Butterfat	Protein	OS
January	247	183,020,550	3.97	3.19	5.74	126	317,595,580	3.97	3.21	5.75
February	245	166,972,158	3.90	3.14	5.73	93	213,798,857	3.86	3.14	5.74
March	245	185,068,578	3.93	3.16	5.71	92	234,137,018	3.83	3.14	5.74
April	244	181,545,802	3.94	3.16	5.70	81	199,555,423	3.82	3.13	5.74
May	244	188,324,362	3.87	3.14	5.71	121	327,295,924	3.73	3.10	5.75
June	244	182,654,877	3.85	3.12	5.73	98	197,841,897	3.70	3.04	5.77
July	243	185,563,624	3.80	3.08	5.74	109	194,653,644	3.68	3.01	5.77
August	245	183,194,647	3.84	3.13	5.71	108	192,047,147	3.71	3.06	5.74
September	243	171,746,533	3.93	3.20	5.71	111	224,151,097	3.79	3.15	5.74
October	238	174,931,921	4.00	3.25	5.69	136	361,452,168	3.89	3.24	5.73
November	238	169,943,014	4.07	3.29	5.74	132	347,541,909	4.03	3.32	5.77
December	238	178,542,992	4.07	3.27	5.72	132	358,305,864	4.06	3.31	5.74
Average/Total	243	2,151,509,058	3.93	3.18	5.72	112	3,168,376,528	3.86	3.17	5.75

Month	Western Oregon 2/					Eastern Oregon				
	No. of Producers	Producer Milk	Butterfat	Protein	OS	No. of Producers	Producer Milk	Butterfat	Protein	OS
January	92	74,536,406	3.90	3.21	5.76	4	4,894,305	3.77	3.18	5.77
February	90	68,964,281	3.84	3.17	5.74	4	4,457,151	3.73	3.19	5.75
March	91	75,046,290	3.85	3.17	5.74	3	4,927,203	3.63	3.16	5.75
April	93	75,344,893	3.86	3.19	5.74	4	5,064,654	3.72	3.17	5.74
May	96	78,281,315	3.80	3.15	5.74	5	5,826,345	3.69	3.14	5.75
June	93	73,133,835	3.75	3.11	5.77	10	7,135,570	3.74	3.11	5.77
July	93	73,710,787	3.72	3.08	5.75	10	7,408,857	3.72	3.08	5.77
August	94	72,872,450	3.77	3.12	5.73	10	7,337,020	3.79	3.14	5.73
September	94	70,864,716	3.84	3.20	5.74	10	7,025,005	3.90	3.26	5.72
October	192	122,337,768	4.17	3.31	5.72	11	77,537,519	4.29	3.56	5.67
November	189	119,402,961	4.25	3.35	5.74	11	74,322,462	4.47	3.66	5.67
December	189	125,679,290	4.22	3.33	5.74	11	76,060,834	4.51	3.66	5.66
Average/Total	117	1,030,174,992	3.96	3.22	5.74	8	281,996,925	4.29	3.54	5.68

1/ Includes: Ada, Bear Lake, Bonner, Canyon, Franklin, Gem, Latah, Lincoln, Owyhee and Payette Counties, Idaho; and Cache County, Utah.

2/ Includes: Deschutes and Umatilla Counties, Oregon; and Siskiyou County, California.

Table T-3a
Butterfat Tests by Region: 2015

Month	Pacific Northwest Order Butterfat			
	Western WA	Eastern WA 1/	Western OR 2/	Eastern OR
January	3.97	3.97	3.90	3.77
February	3.90	3.86	3.84	3.73
March	3.93	3.83	3.85	3.63
April	3.94	3.82	3.86	3.72
May	3.87	3.73	3.80	3.69
June	3.85	3.70	3.75	3.74
July	3.80	3.68	3.72	3.72
August	3.84	3.71	3.77	3.79
September	3.93	3.79	3.84	3.90
October	4.00	3.89	4.17	4.29
November	4.07	4.03	4.25	4.47
December	4.07	4.06	4.22	4.51
Average	3.93	3.86	3.96	4.29

1/ Includes: Ada, Bear Lake, Bonner, Canyon, Franklin, Gem, Latah, Lincoln, Owyhee and Payette Counties, Idaho; and Cache County, Utah.

2/ Includes: Deschutes and Umatilla Counties, Oregon; and Siskiyou County, California.

Pacific Northwest Order: Butterfat

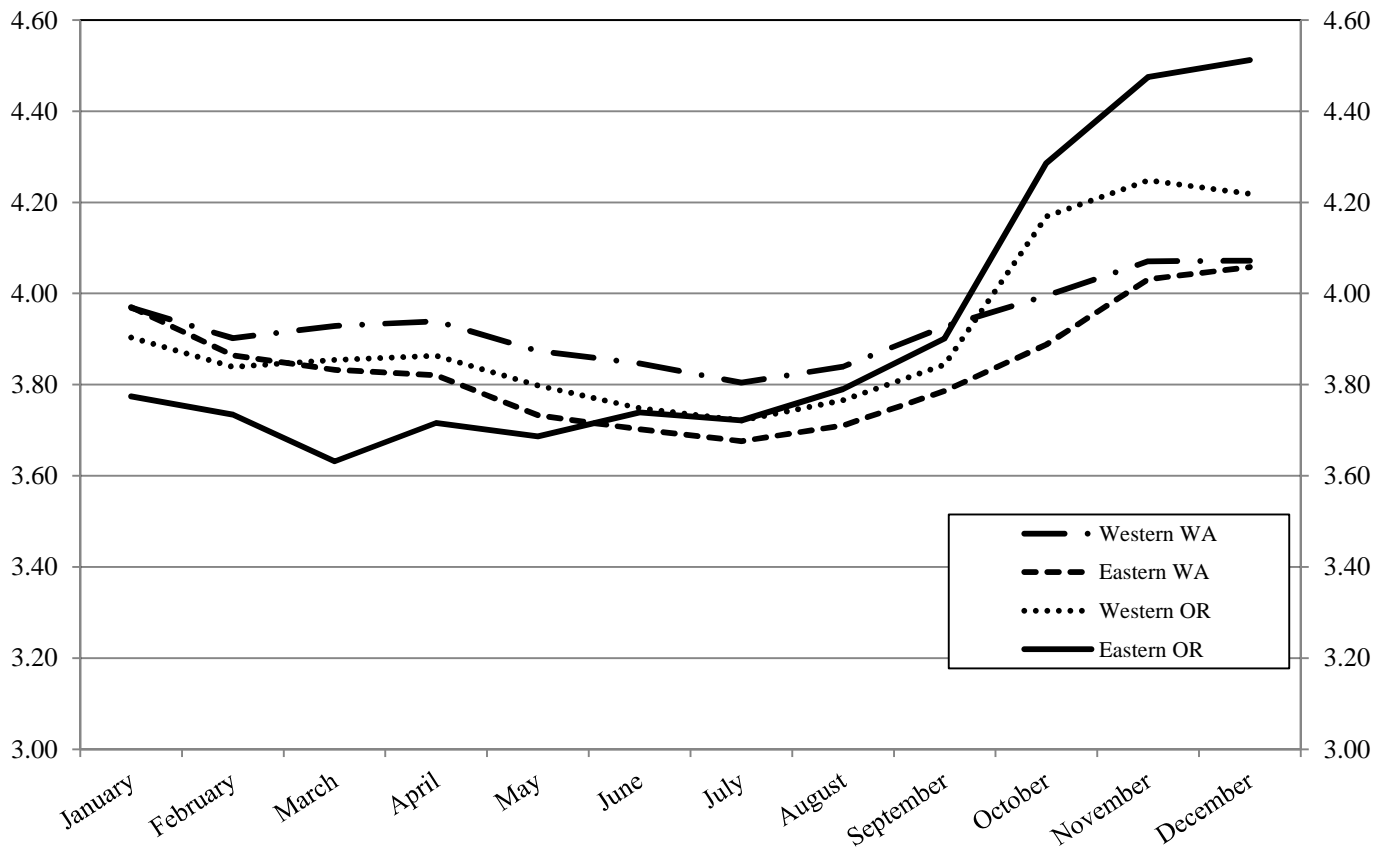


Table T-3b
Protein Tests by Region: 2015

Month	Pacific Northwest Order			
	Western WA	Eastern WA 1/	Western OR 2/	Eastern OR
January	3.19	3.21	3.21	3.18
February	3.14	3.14	3.17	3.19
March	3.16	3.14	3.17	3.16
April	3.16	3.13	3.19	3.17
May	3.14	3.10	3.15	3.14
June	3.12	3.04	3.11	3.11
July	3.08	3.01	3.08	3.08
August	3.13	3.06	3.12	3.14
September	3.20	3.15	3.20	3.26
October	3.25	3.24	3.31	3.56
November	3.29	3.32	3.35	3.66
December	3.27	3.31	3.33	3.66
Average	3.18	3.17	3.22	3.54

1/ Includes: Ada, Bear Lake, Bonner, Canyon, Franklin, Gem, Latah, Lincoln, Owyhee and Payette Counties, Idaho; and Cache County, Utah.

2/ Includes: Deschutes and Umatilla Counties, Oregon; and Siskiyou County, California.

Pacific Northwest Order: Protein

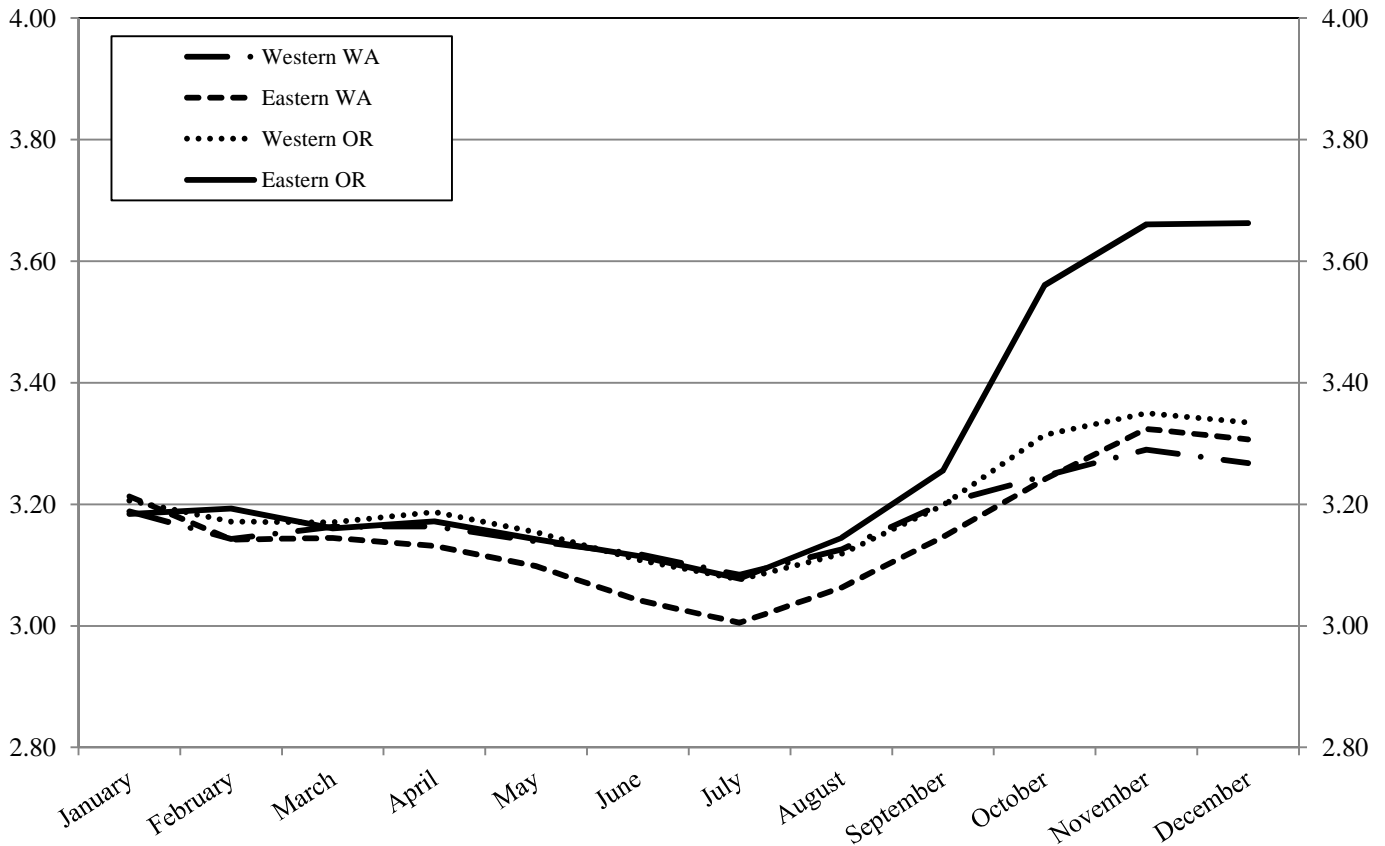


Table T-3c
Other Solids Tests by Region: 2015

Pacific Northwest Order

Month	Other Solids			
	Western WA	Eastern WA 1/	Western OR 2/	Eastern OR
January	5.74	5.75	5.76	5.77
February	5.73	5.74	5.74	5.75
March	5.71	5.74	5.74	5.75
April	5.70	5.74	5.74	5.74
May	5.71	5.75	5.74	5.75
June	5.73	5.77	5.77	5.77
July	5.74	5.77	5.75	5.77
August	5.71	5.74	5.73	5.73
September	5.71	5.74	5.74	5.72
October	5.69	5.73	5.72	5.67
November	5.74	5.77	5.74	5.67
December	5.72	5.74	5.74	5.66
Average	5.72	5.75	5.74	5.68

1/ Includes: Ada, Bear Lake, Bonner, Canyon, Franklin, Gem, Latah, Lincoln, Owyhee and Payette Counties, Idaho; and Cache County, Utah.

2/ Includes: Deschutes and Umatilla Counties, Oregon; and Siskiyou County, California.

Pacific Northwest Order: Other Solids

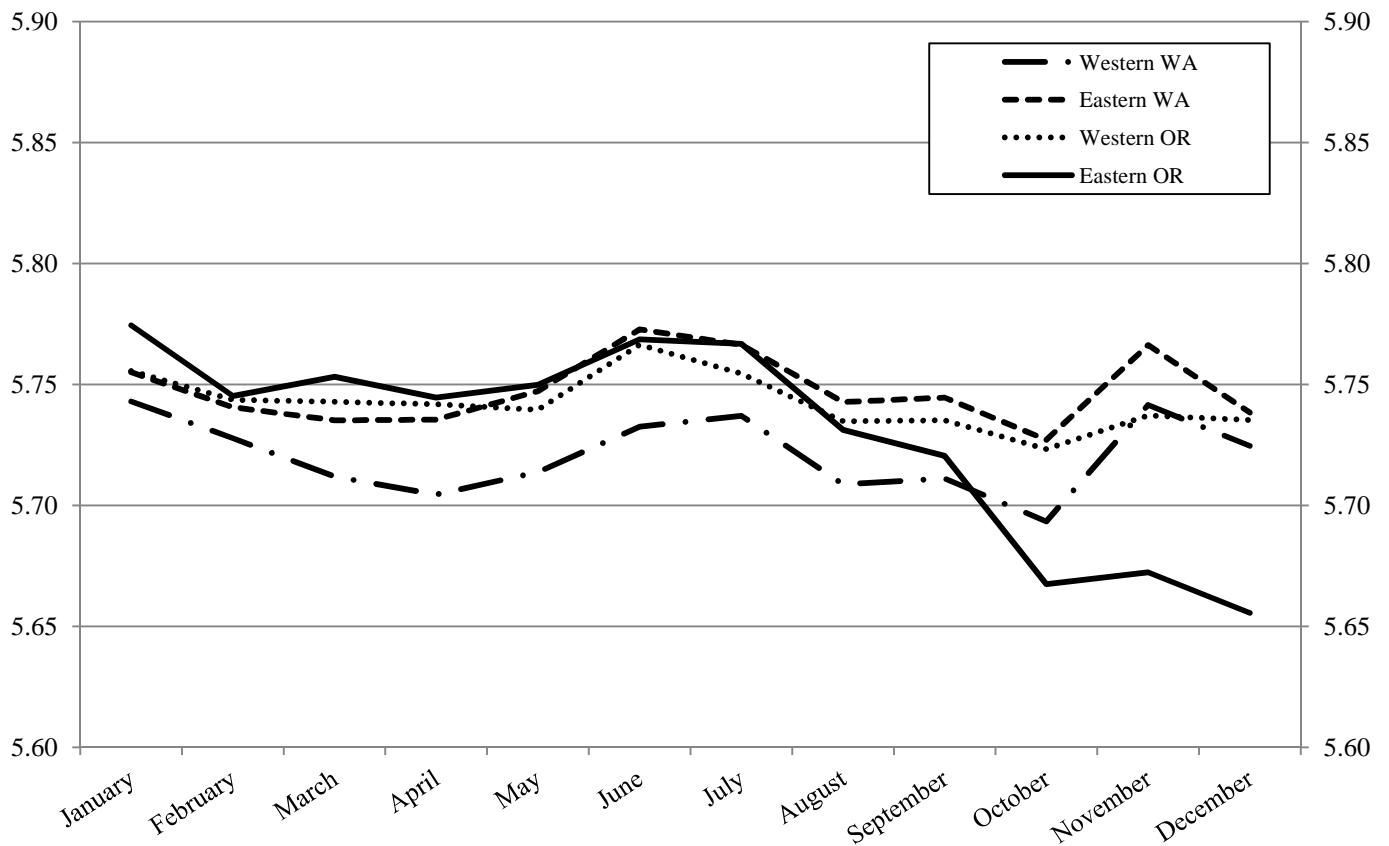
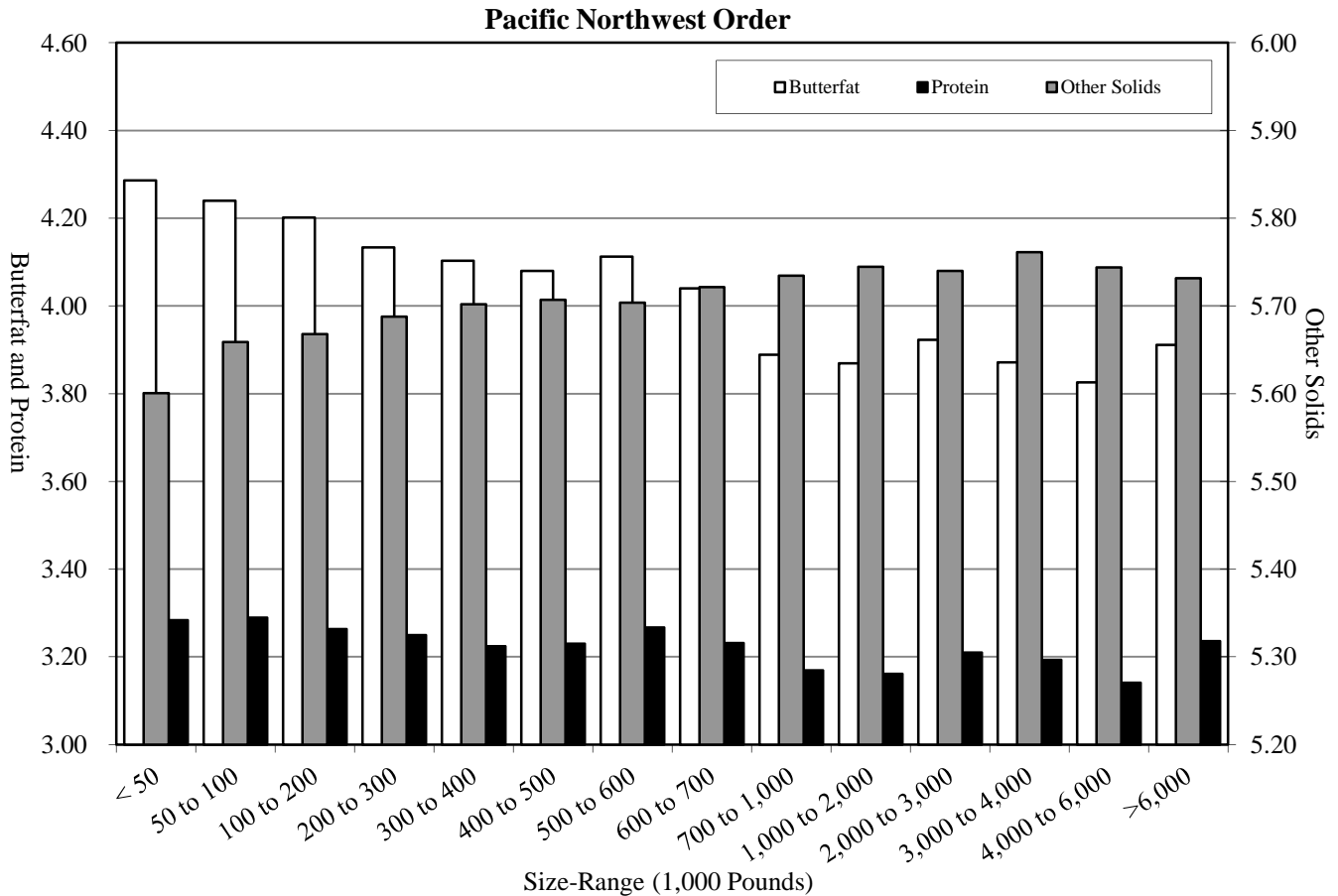


Table T-4
Component Tests by Size-Range of Producer Milk Deliveries: 2015

Size-Range (Pounds)		No. of Observations	Butterfat	Protein	Other Solids
Equal to or more than	Less than				
0	50,000	252	4.29	3.28	5.60
50,000	100,000	319	4.24	3.29	5.66
100,000	200,000	871	4.20	3.26	5.67
200,000	300,000	688	4.13	3.25	5.69
300,000	400,000	334	4.10	3.22	5.70
400,000	500,000	279	4.08	3.23	5.71
500,000	600,000	296	4.11	3.27	5.70
600,000	700,000	303	4.04	3.23	5.72
700,000	1,000,000	533	3.89	3.17	5.73
1,000,000	2,000,000	948	3.87	3.16	5.74
2,000,000	3,000,000	467	3.92	3.21	5.74
3,000,000	4,000,000	129	3.87	3.19	5.76
4,000,000	6,000,000	183	3.83	3.14	5.74
6,000,000		150	3.91	3.24	5.73
Total/Average		5,752	3.92	3.20	5.73



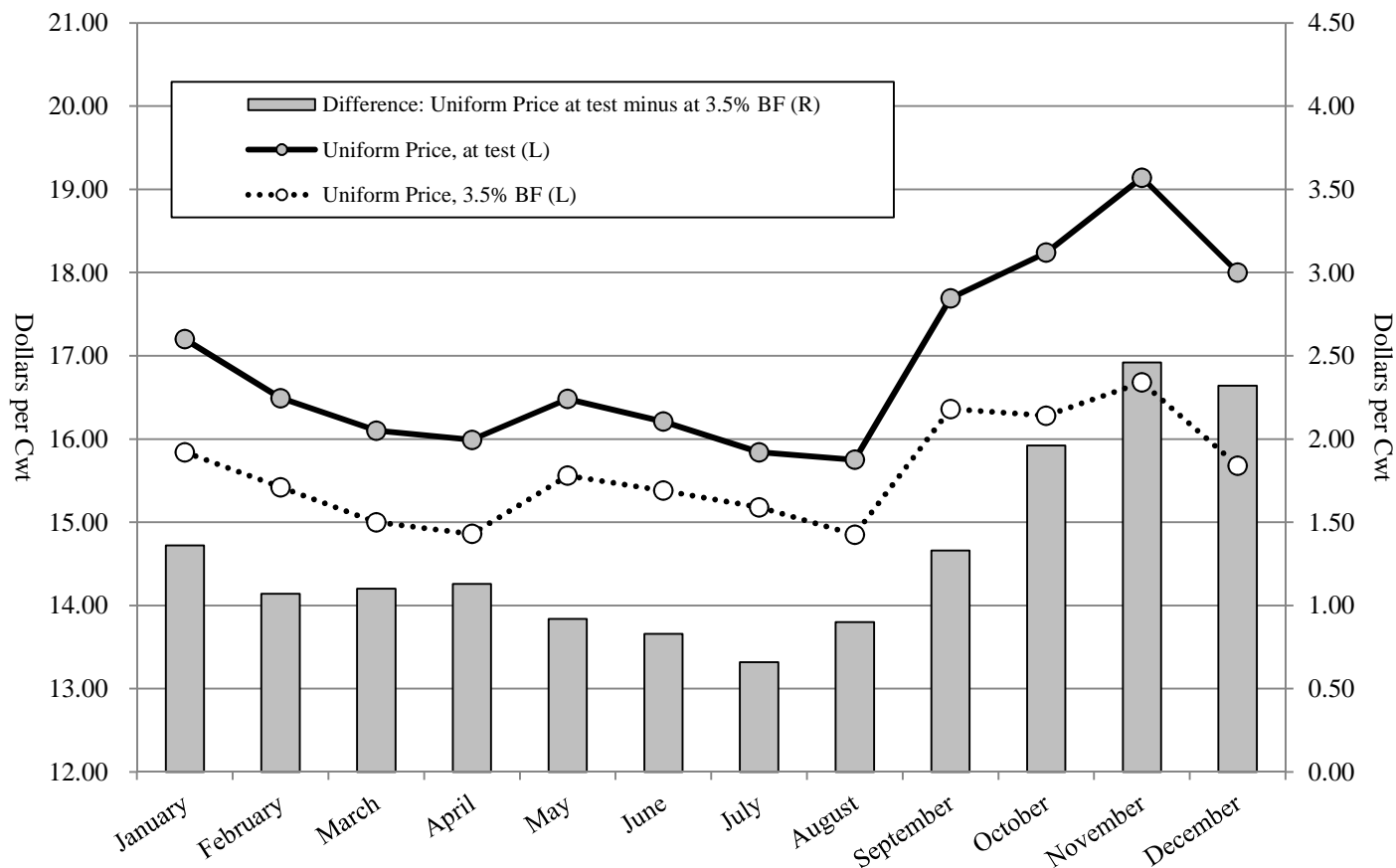
**Table T-5
 Producer Prices and Component Tests by Month: 2015**

Pacific Northwest Order

Month	A	B	Difference (B - A)	Butterfat		Protein		Other Solids		Producer Price Differential 1/ - \$ / Cwt -
	Uniform Price, 3.5% BF	Uniform Price, at test		- \$ / Lb -	- % -	- \$ / Lb -	- % -	- \$ / Lb -	- % -	
January	15.84	17.20	1.36	1.6855	3.96	2.6731	3.20	0.4001	5.75	(0.34)
February	15.42	16.49	1.07	1.8296	3.87	2.4051	3.15	0.3273	5.74	(0.04)
March	15.00	16.10	1.10	1.8444	3.87	2.4875	3.16	0.2918	5.73	(0.56)
April	14.86	15.99	1.13	1.8940	3.87	2.5551	3.15	0.2698	5.72	(0.95)
May	15.56	16.48	0.92	2.0599	3.78	2.5206	3.12	0.2533	5.74	(0.63)
June	15.38	16.21	0.83	2.1011	3.77	2.6915	3.08	0.2322	5.76	(1.34)
July	15.18	15.84	0.66	2.1125	3.74	2.6070	3.05	0.2004	5.75	(1.15)
August	14.85	15.75	0.90	2.2674	3.77	2.5692	3.10	0.1151	5.73	(1.42)
September	16.36	17.69	1.33	2.7531	3.85	1.9801	3.18	0.0465	5.73	0.54
October	16.28	18.24	1.96	2.9087	4.00	1.7019	3.29	0.0328	5.71	0.82
November	16.68	19.14	2.46	3.1830	4.12	1.3205	3.36	0.0361	5.75	1.38
December	15.68	18.00	2.32	2.9057	4.14	1.3599	3.34	0.0355	5.73	1.24
Average	15.67	17.10	1.44	2.3749	3.92	2.1447	3.20	0.1739	5.73	(0.05)

1/ The producer price differentials for the Pacific Northwest Order are subject to applicable location adjustments.

Pacific Northwest Order



**Table T-6
 Producer Milk and Value by Size-Range of Producer Milk Deliveries: 2015**

Pacific Northwest Order

Size-Range		Producer Milk	Percent of Producer Milk	No. of Observations	Percent of Observations	Producer Milk Value at Test 1/	Value at Test
Equal to or more than	Less than						
- - Pounds - - -		- Pounds -	- % -		- % -	- Dollars -	- \$ / Cwt -
0	50,000	8,292,867	0.1%	252	4.4%	1,507,065.57	18.17
50,000	100,000	24,203,011	0.4%	319	5.5%	4,372,246.20	18.06
100,000	200,000	126,703,599	1.9%	871	15.1%	22,652,158.44	17.88
200,000	300,000	171,096,867	2.6%	688	12.0%	30,268,632.77	17.69
300,000	400,000	115,078,394	1.7%	334	5.8%	20,172,962.19	17.53
400,000	500,000	125,087,562	1.9%	279	4.9%	21,997,860.21	17.59
500,000	600,000	163,166,067	2.5%	296	5.1%	28,993,100.71	17.77
600,000	700,000	196,342,237	3.0%	303	5.3%	34,191,496.94	17.41
700,000	1,000,000	446,017,781	6.7%	533	9.3%	75,331,651.26	16.89
1,000,000	2,000,000	1,351,708,017	20.4%	948	16.5%	228,262,999.62	16.89
2,000,000	3,000,000	1,142,862,271	17.2%	467	8.1%	195,264,809.75	17.09
3,000,000	4,000,000	460,625,476	6.9%	129	2.2%	78,181,269.77	16.97
4,000,000	6,000,000	886,794,528	13.4%	183	3.2%	148,886,720.97	16.79
6,000,000		1,414,078,826	21.3%	150	2.6%	244,322,076.19	17.28
Total/Average		6,632,057,503	100.0%	5,752	100.0%	1,134,405,050.58	17.10

1/ Based on Federal order producer minimum prices. Producer prices are subject to location adjustments.

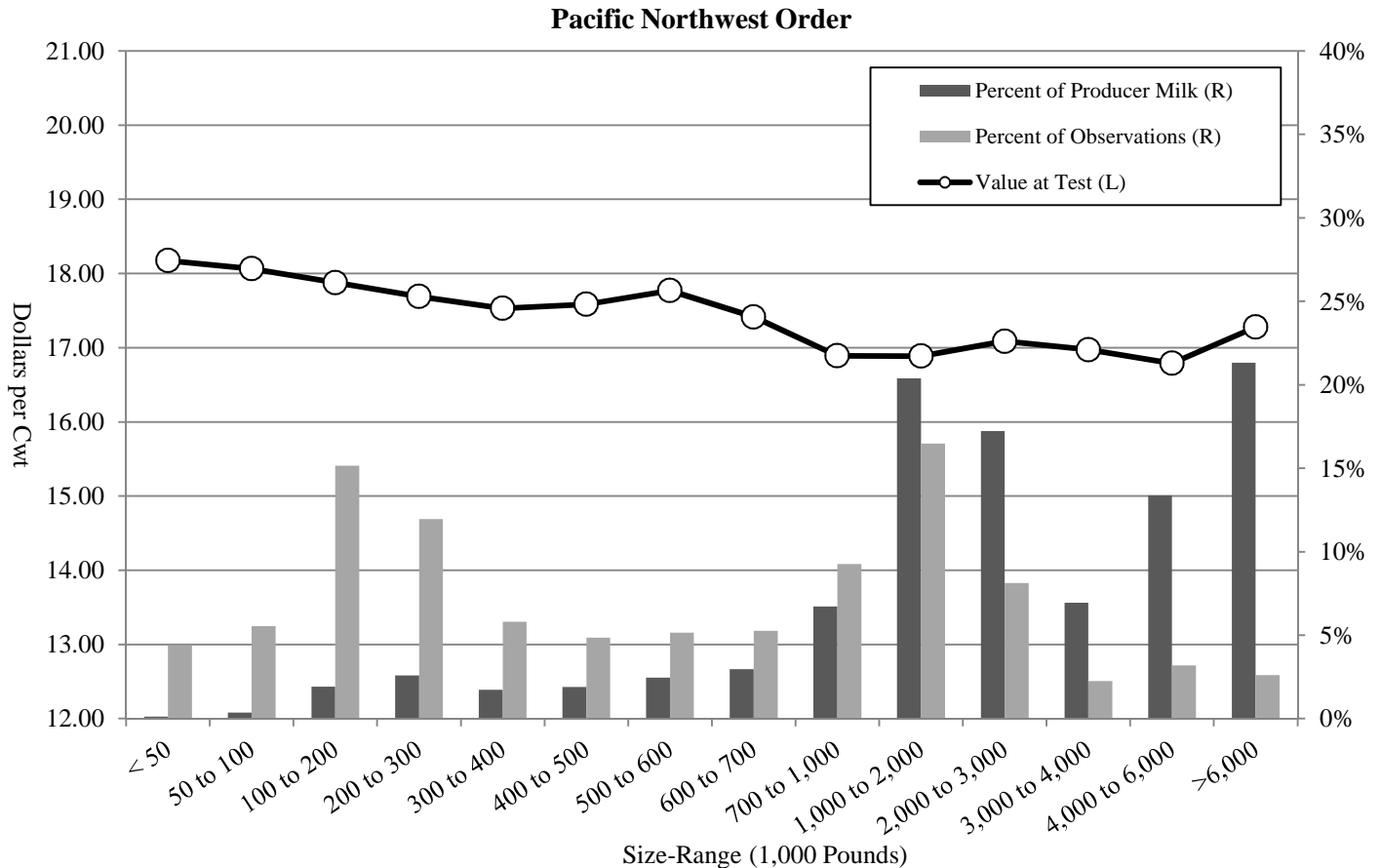


Table T-7a
Long Term Trends in Component Tests, Butterfat: 2006-2015

Pacific Northwest Order

Year	Average No. of Producers	Test	Standard Deviation	Minimum	Maximum
2006	779	3.69	0.36	2.49	5.47
2007	705	3.70	0.39	2.60	5.86
2008	610	3.67	0.39	2.60	5.65
2009	624	3.71	0.41	2.62	5.83
2010	632	3.73	0.43	2.74	6.10
2011	610	3.77	0.43	2.70	6.21
2012	532	3.81	0.42	2.78	6.20
2013	568	3.88	0.44	2.84	6.07
2014	534	3.88	0.45	2.72	6.22
2015	479	3.92	0.46	2.47	6.67
10 year Simple Average					
	607	3.78	0.42	2.66	6.03

Pacific Northwest Order: Butterfat

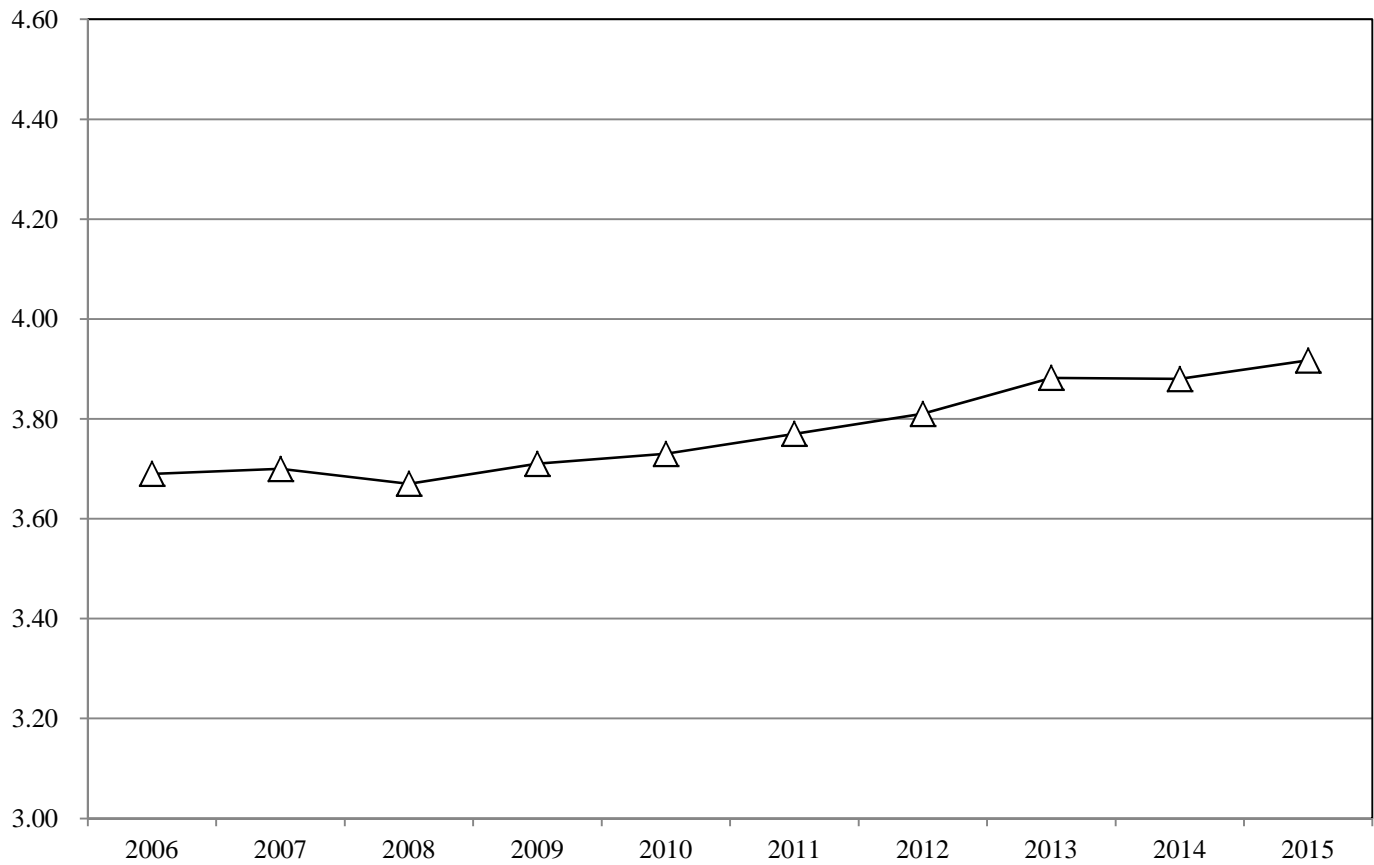


Table T-7b
Long Term Trends in Component Tests, Protein: 2006-2015

Pacific Northwest Order

Year	Average No. of Producers	Test	Standard Deviation	Minimum	Maximum
2006	779	3.07	0.20	2.21	4.09
2007	705	3.09	0.21	2.17	4.42
2008	610	3.09	0.21	2.58	4.28
2009	624	3.11	0.22	2.63	4.09
2010	632	3.15	0.22	2.13	4.40
2011	610	3.17	0.22	2.58	4.43
2012	532	3.17	0.22	2.47	4.31
2013	568	3.22	0.22	2.58	4.30
2014	534	3.20	0.22	2.60	4.56
2015	479	3.20	0.23	2.58	4.34
10 year Simple Average					
	607	3.15	0.22	2.45	4.32

Pacific Northwest Order: Protein

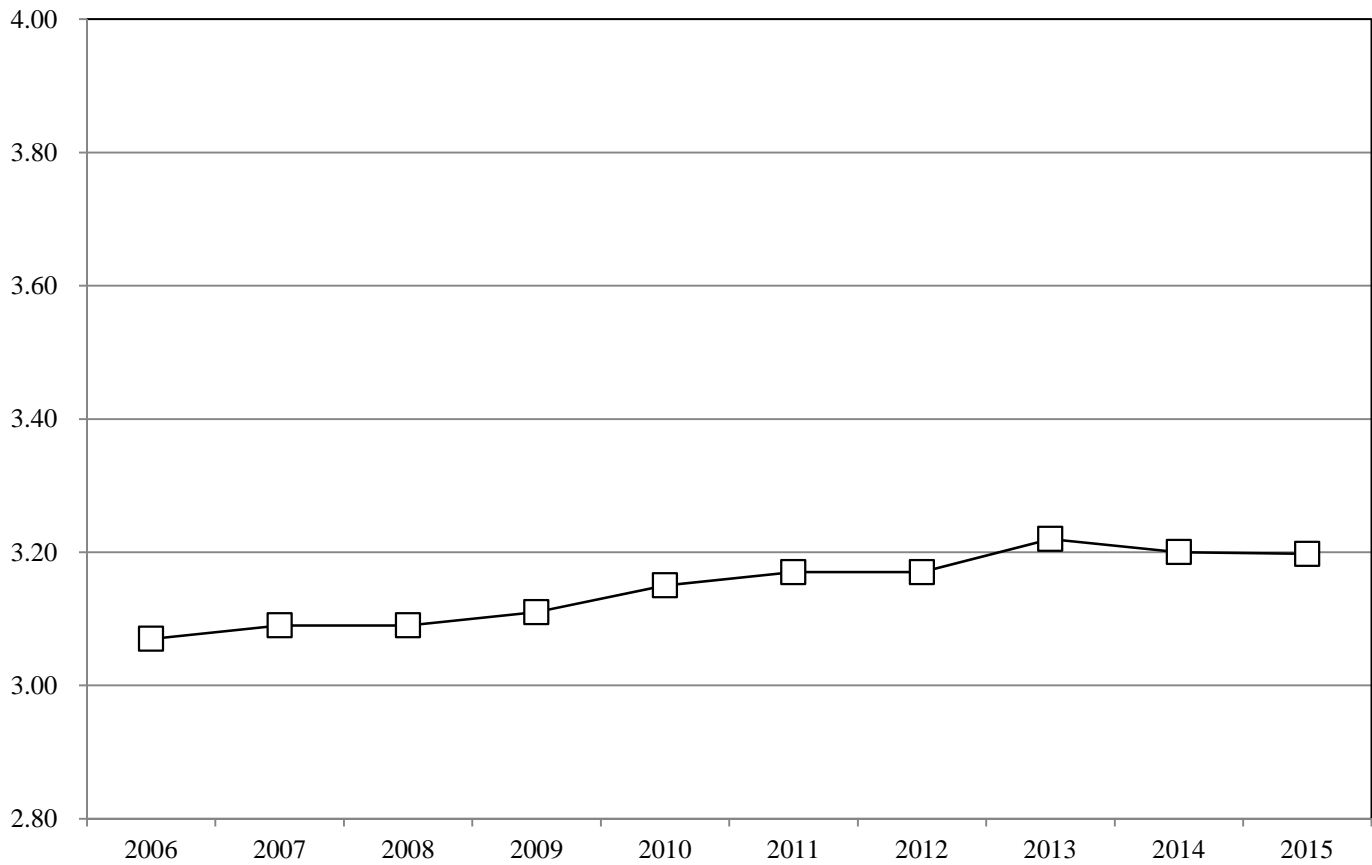


Table T-7c
Long Term Trends in Component Tests, Other Solids: 2006-2015

Pacific Northwest Order

Year	Average No. of Producers	Test	Standard Deviation	Minimum	Maximum
2006	779	5.70	0.11	4.84	6.15
2007	705	5.71	0.09	4.78	5.93
2008	610	5.70	0.09	4.86	5.99
2009	624	5.69	0.09	4.96	5.87
2010	632	5.71	0.09	4.71	5.92
2011	610	5.73	0.09	4.86	6.01
2012	532	5.74	0.09	4.62	5.95
2013	568	5.73	0.08	4.67	5.97
2014	534	5.72	0.08	4.78	5.91
2015	479	5.73	0.09	5.20	5.97
10 year Simple Average	607	5.72	0.09	4.83	5.97

Pacific Northwest Order: Other Solids

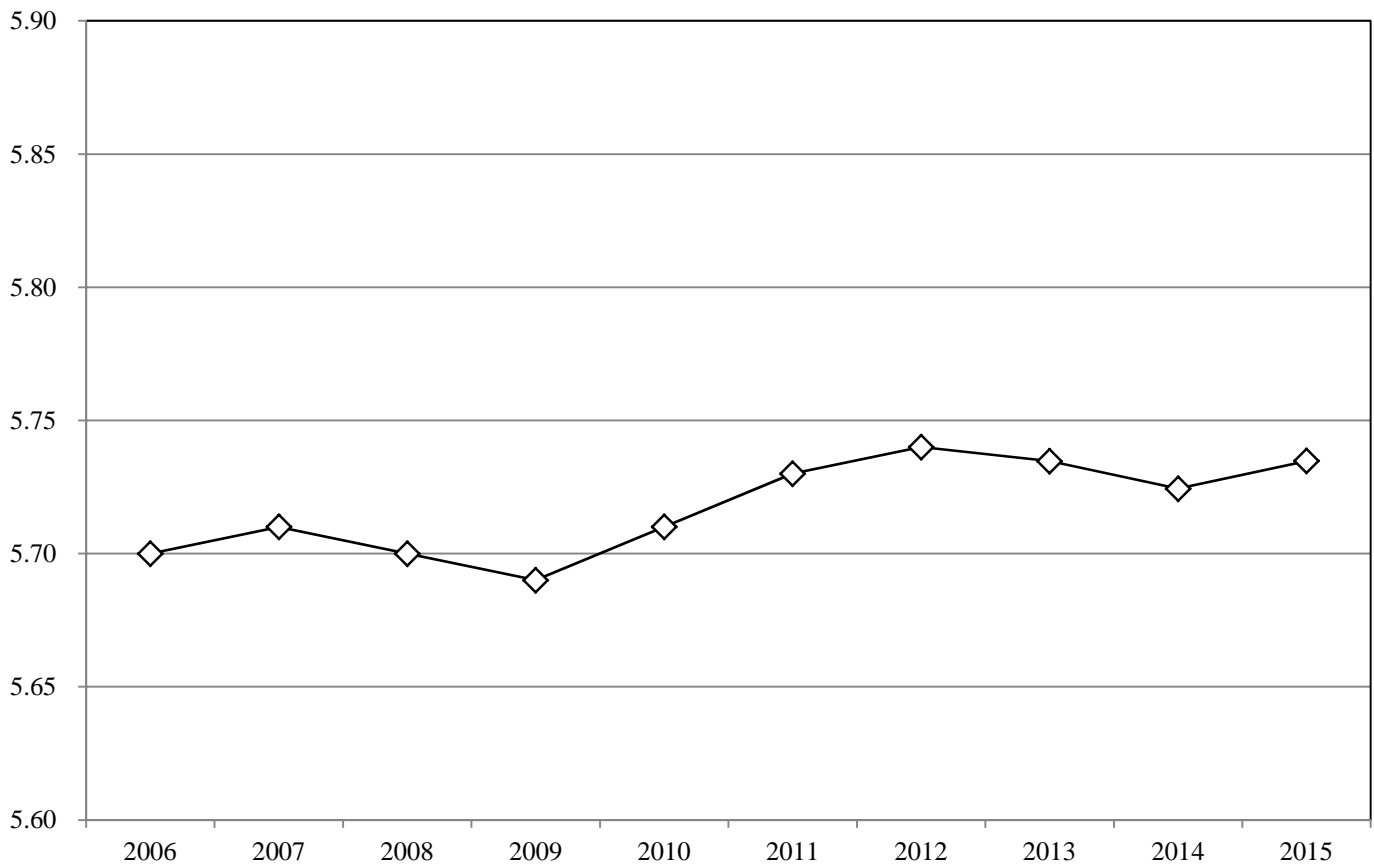


Table T-8

Number of Producers, Producer Milk, Component Tests and Standard Deviations: 2015

Arizona Order

Month	No. of Producers	Producer Milk	Butterfat	
			Test	Standard Deviation
January	95	410,814,676	3.54	0.33
February	94	383,083,139	3.48	0.30
March	94	435,074,822	3.41	0.31
April	95	424,974,951	3.40	0.31
May	95	431,240,029	3.40	0.28
June	95	396,946,549	3.43	0.28
July	95	384,504,700	3.37	0.29
August	94	360,483,882	3.39	0.27
September	96	366,968,768	3.44	0.28
October	97	387,918,140	3.51	0.29
November	91	381,308,327	3.63	0.32
December	95	424,661,803	3.62	0.35
Average/Total	95	4,787,979,786	3.47	0.31

Arizona Order

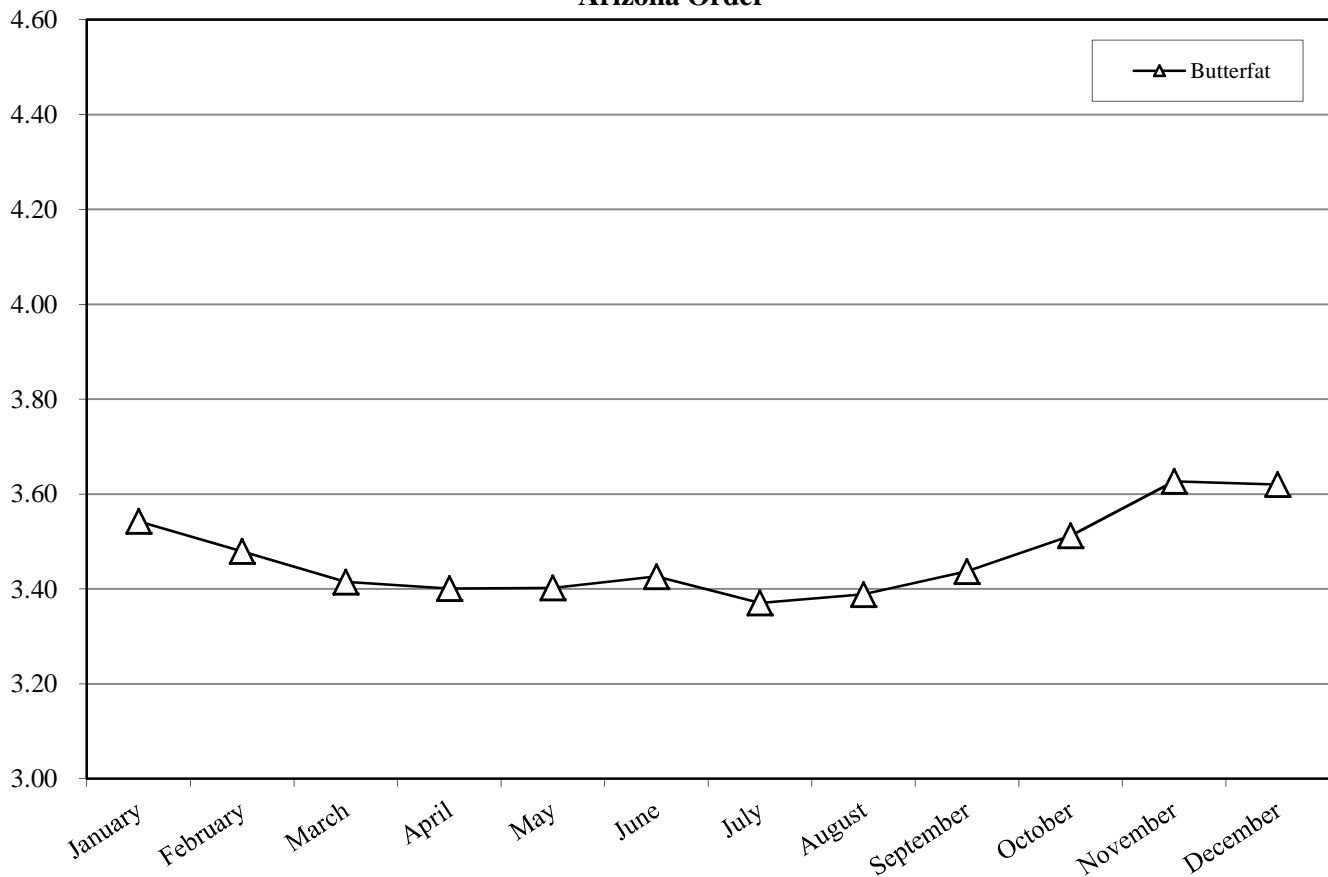


Table T-9
Component Tests by Size-Range of Producer Milk Deliveries: 2015

Size-Range (Pounds)		No. of Observations	Butterfat
Equal to or more than	Less than		
0	200,000	37	3.62
200,000	300,000	22	3.62
300,000	400,000	12	3.56
400,000	500,000	8	3.59
500,000	600,000	8	3.55
600,000	700,000	12	3.58
700,000	1,000,000	54	3.51
1,000,000	2,000,000	207	3.65
2,000,000	3,000,000	184	3.68
3,000,000	4,000,000	108	3.54
4,000,000	5,000,000	137	3.46
5,000,000	6,000,000	134	3.44
6,000,000	7,000,000	68	3.43
7,000,000		145	3.39
Total/Average		1,136	3.47

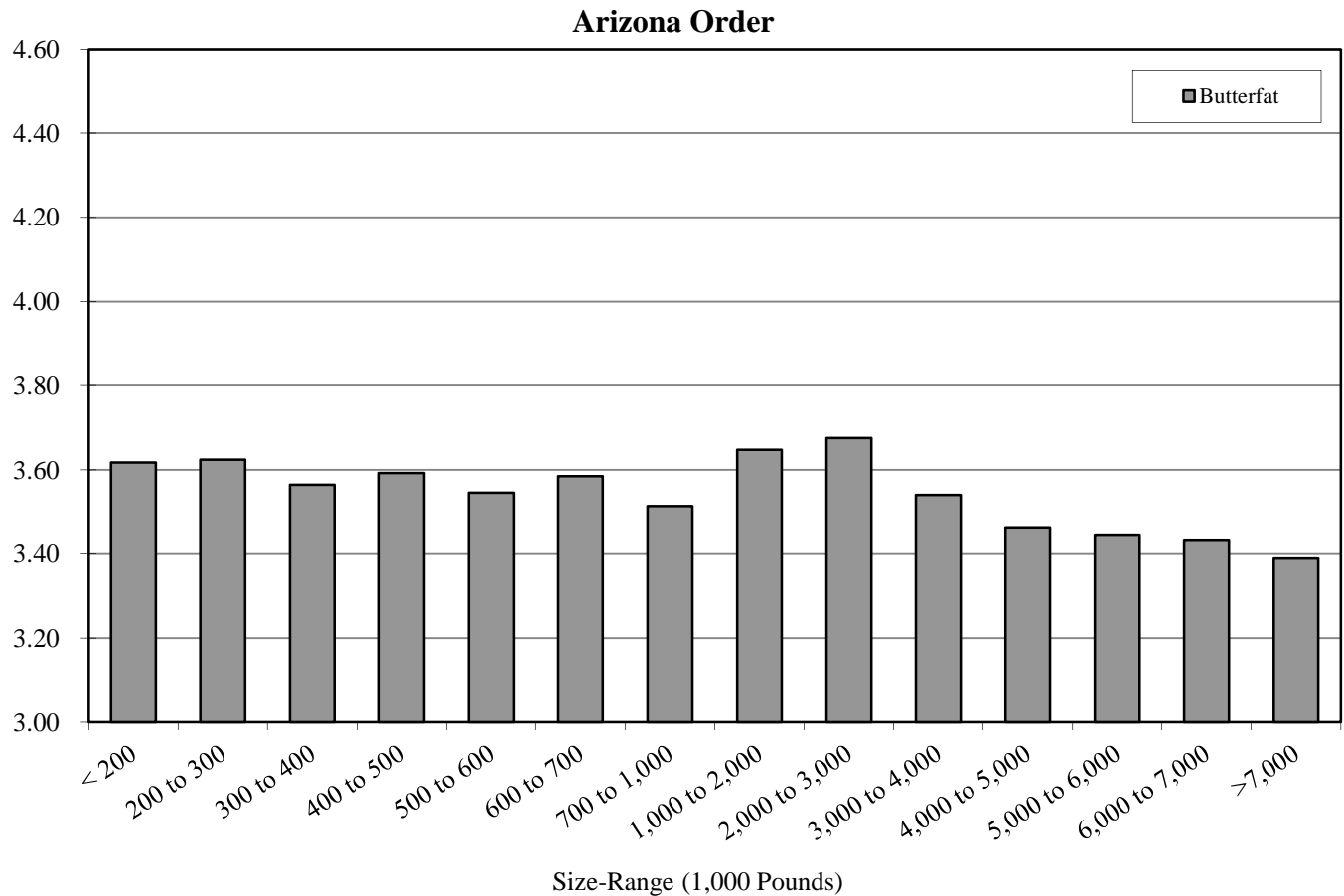


Table T-10
Producer Prices and Component Tests by Month: 2015

Arizona Order

Month	A		B		Butterfat 1/		Skim 1/	
	Uniform Price, 3.5% BF	Uniform Price, at test	Difference (B - A)	- \$ / Lb -	- % -	- \$ / Cwt -	- % -	
January	16.04	16.11	0.07	1.7640	3.54	10.22	96.46	
February	15.56	15.52	(0.04)	1.8122	3.48	9.55	96.52	
March	15.33	15.18	(0.15)	1.8434	3.41	9.20	96.59	
April	15.25	15.07	(0.18)	1.8922	3.40	8.94	96.60	
May	15.67	15.48	(0.19)	2.0415	3.40	8.83	96.60	
June	15.95	15.80	(0.15)	2.0954	3.43	8.93	96.57	
July	15.76	15.50	(0.26)	2.1185	3.37	8.65	96.63	
August	15.88	15.64	(0.24)	2.2507	3.39	8.29	96.61	
September	16.80	16.64	(0.16)	2.6588	3.44	7.77	96.56	
October	16.80	16.83	0.03	2.8830	3.51	6.95	96.49	
November	17.28	17.67	0.39	3.1399	3.63	6.52	96.37	
December	16.24	16.59	0.35	2.9426	3.62	6.16	96.38	
Average	16.03	15.98	(0.04)	2.2847	3.47	8.35	96.53	

1/ The producer prices for the Arizona Order are subject to applicable location adjustments.

Arizona Order

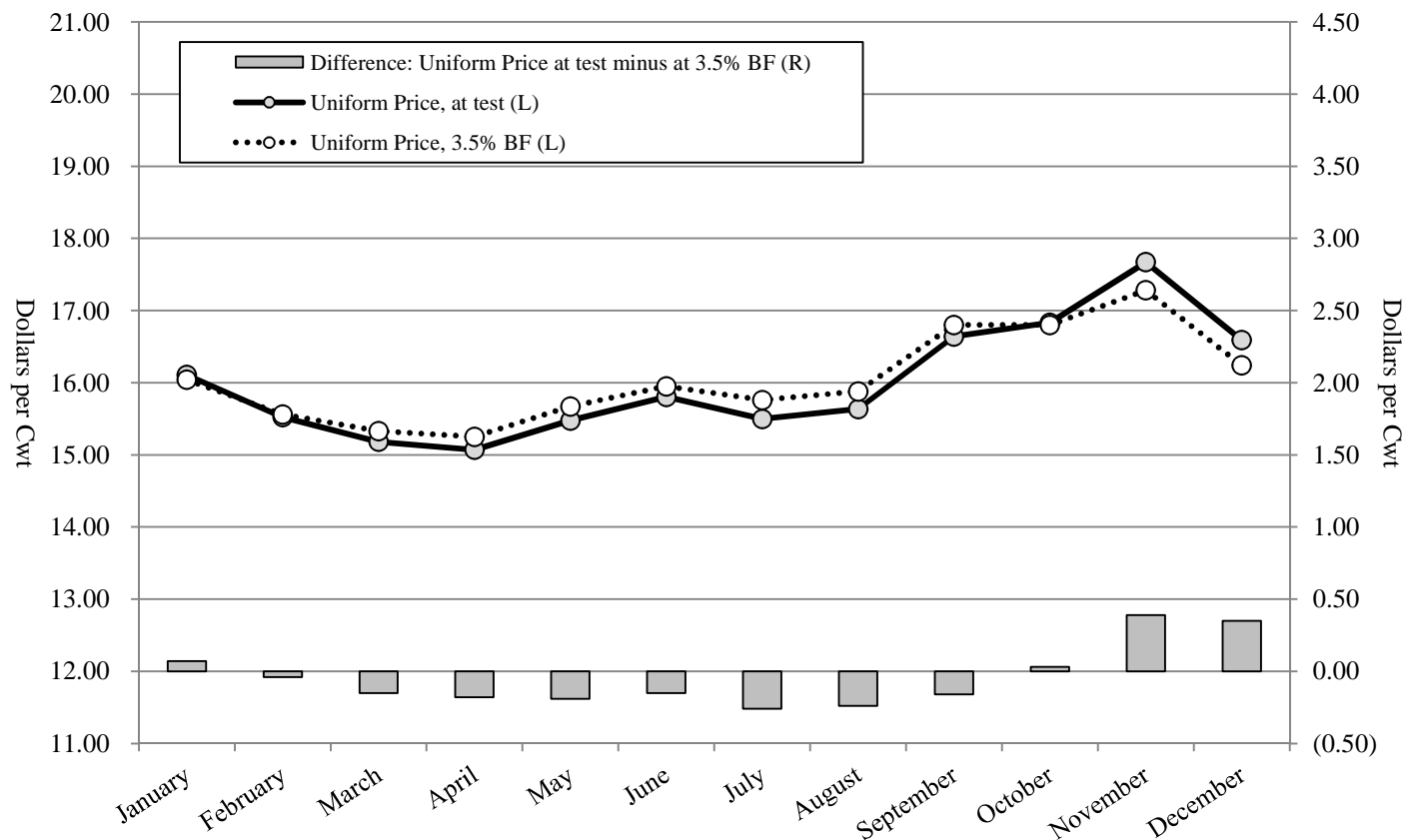


Table T-11
Producer Milk and Value by Size-Range of Producer Milk Deliveries: 2015

Arizona Order

Size-Range		Producer Milk	Percent of Producer Milk	No. of Observations	Percent of Observations	Producer Milk Value at Test 1/	Value at Test
Equal to or more than	Less than						
- - - Pounds - - -		- Pounds -	- % -		- % -	- Dollars -	- \$ / Cwt -
0	200,000	3,549,569	0.07%	37	3.26%	563,352.88	15.87
200,000	300,000	5,173,042	0.11%	22	1.94%	823,111.44	15.91
300,000	400,000	4,013,426	0.08%	12	1.06%	637,473.03	15.88
400,000	500,000	3,597,960	0.08%	8	0.70%	577,210.32	16.04
500,000	600,000	4,423,980	0.09%	8	0.70%	713,471.49	16.13
600,000	700,000	7,794,390	0.16%	12	1.06%	1,279,231.79	16.41
700,000	1,000,000	45,744,024	0.96%	54	4.75%	7,450,080.38	16.29
1,000,000	2,000,000	316,581,637	6.61%	207	18.22%	52,378,741.76	16.55
2,000,000	3,000,000	443,988,398	9.27%	184	16.20%	72,906,533.64	16.42
3,000,000	4,000,000	377,466,147	7.88%	108	9.51%	60,863,898.82	16.12
4,000,000	5,000,000	627,656,117	13.11%	137	12.06%	101,335,593.10	16.15
5,000,000	6,000,000	731,325,164	15.27%	134	11.80%	116,228,275.55	15.89
6,000,000	7,000,000	442,653,472	9.25%	68	5.99%	69,954,474.30	15.80
7,000,000		1,774,012,460	37.05%	145	12.76%	279,637,322.62	15.76
Total/Average		4,787,979,786	100.00%	1,136	100.00%	765,348,771.13	15.98

1/ Based on Federal order minimum producer prices. Producer prices are subject to location adjustments.

Arizona Order

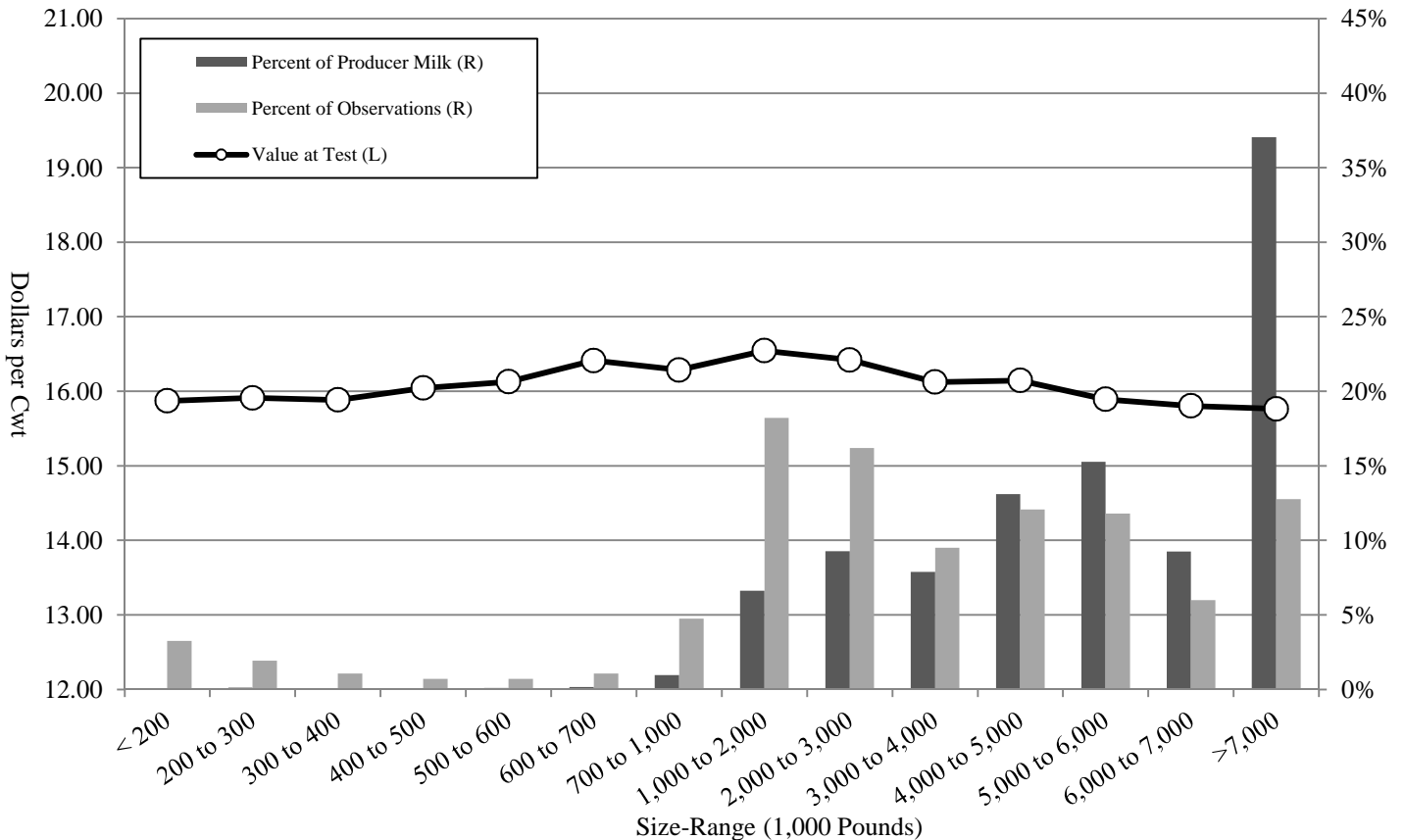


Table T-12
Long Term Trends in Component Tests, Butterfat: 2006-2015

Arizona Order

Year	Average No. of Producers	Test	Standard Deviation	Minimum	Maximum
2006	92	3.59	0.32	2.94	4.88
2007	93	3.59	0.32	2.62	4.86
2008	99	3.56	0.33	2.87	5.07
2009	97	3.49	0.33	2.59	5.60
2010	96	3.50	0.36	2.36	5.45
2011	100	3.55	0.33	2.48	4.99
2012	95	3.55	0.33	2.98	5.46
2013	92	3.52	0.32	2.90	5.09
2014	92	3.47	0.31	2.91	4.94
2015	95	3.47	0.31	2.46	5.02
10 year Simple Average	95	3.53	0.33	2.71	5.14

Arizona Order: Butterfat

