

UNITED STATES DEPARTMENT OF AGRICULTURE

Agricultural Marketing Service

Dairy Programs

FEDERAL MILK ORDERS 124 & 131

1930-220th Street SE, Ste. 102
Bothell, WA 98021
Phone: (425) 487-6009
Fax: (425) 487-2775
Email: fmmaseattle@fmmaseattle.com

4835 E. Cactus Road, Ste. 365
Scottsdale, AZ 85254
Phone: (602) 547-2909
Fax: (602) 547-2906

**OVERVIEW OF COMPONENT TESTS OF PRODUCER MILK
AT THE FARM LEVEL**

**PACIFIC NORTHWEST AND ARIZONA
FEDERAL MILK MARKETING ORDERS**

2016

March 2017

The U.S. Department of Agriculture (USDA) prohibits discrimination in all its programs and activities on the basis of race, color, national origin, age, disability, and where applicable, sex, marital status, familial status, parental status, religion, sexual orientation, genetic information, political beliefs, reprisal, or because all or part of an individual's income is derived from any public assistance program. (Not all prohibited bases apply to all programs.) Persons with disabilities who require alternative means for communication of program information (Braille, large print, audiotape, etc.) should contact USDA's TARGET Center at (202) 720-2600 (voice and TDD). To file a complaint of discrimination, write to USDA, Director, Office of Civil Rights, 1400 Independence Avenue, S.W., Washington, D.C. 20250-9410, or call (800) 795-3272 (voice) or (202) 720-6382 (TDD). USDA is an equal opportunity provider and employer.

OVERVIEW OF COMPONENT TESTS OF PRODUCER MILK AT THE FARM LEVEL

PACIFIC NORTHWEST AND ARIZONA FEDERAL MILK MARKETING ORDERS

2016

The following tables provide an overview of component tests of producer milk pooled on the Pacific Northwest (FO 124) and Arizona (FO 131) Federal Milk Marketing Orders. The tables summarize average tests by order, month, year, region, size-range of production, and long term trends. Producer milk values are also calculated using Federal order minimum producer prices for the respective orders at 3.5% butterfat and at test. All test and value averages are weighted averages.

The farm level data included in these tables comprises all producers and producer milk pooled on the Pacific Northwest and Arizona Orders. The data was collected from producer payrolls submitted by handlers to the market administrator's office. Components available for the Pacific Northwest Order are butterfat, protein, and other solids. Other solids are lactose and minerals. The component for the Arizona Order is butterfat. In certain months, milk production that historically qualified to be pooled on an order may not have been pooled due to price relationships. This historically eligible producer milk is **not** included in this analysis. Large changes in producer numbers and producer milk typically indicate those months when milk was not pooled due to price relationships. Small differences may be evident between published pool information and the data shown in this overview due to the use of partially audited payroll data.

The orders' milksheds were divided into different regions when possible. The Pacific Northwest Order's milkshed was divided into four regions representing each of Oregon and Washington divided by the Cascade Mountain Range. In Oregon and Washington, the west side of the Cascade Mountain Range has more precipitation and is characterized by a milder climate than the eastern side of the states. The region east of the Cascade Mountain Range has a drier climate with warmer summers and colder winters. Arizona is very dry year round with little precipitation and relatively high temperatures where most milk is produced. Data from a small number of counties of other states are included in the data for the defined regions based on order association, relative proximity, and/or to prevent the release of restricted data.

The regions are:

- Western Washington
- Eastern Washington (& Idaho, Utah and Northern California)
- Western Oregon
- Eastern Oregon
- Arizona (& Southern California and Texas)

An index of Tables grouped by Federal order can be found on page ii.

Index of Tables

Page
Number

Pacific Northwest Order (FO 124)

Tables:	T-1	Number of Producers, Producer Milk, Component Tests and Standard Deviations: 2016	1
	T-2	Number of Producers, Producer Milk and Component Tests by Region: 2016	2
	T-3a	Butterfat Tests by Region: 2016	3
	T-3b	Protein Tests by Region: 2016	4
	T-3c	Other Solids Tests by Region: 2016	5
	T-4	Component Tests by Size-Range of Producer Milk Deliveries: 2016	6
	T-5	Producer Prices and Component Tests by Month: 2016	7
	T-6	Producer Milk and Value by Size-Range of Producer Milk Deliveries: 2016	8
	T-7a	Long Term Trends in Component Tests, Butterfat: 2007-2016	9
	T-7b	Long Term Trends in Component Tests, Protein: 2007-2016	10
	T-7c	Long Term Trends in Component Tests, Other Solids: 2007-2016	11

Arizona Order (FO 131)

T-8	Number of Producers, Producer Milk, Component Tests and Standard Deviations: 2016	12
T-9	Component Tests by Size-Range of Producer Milk Deliveries: 2016	13
T-10	Producer Prices and Component Tests by Month: 2016	14
T-11	Producer Milk and Value by Size-Range of Producer Milk Deliveries: 2016	15
T-12	Long Term Trends in Component Tests, Butterfat: 2007-2016	16

Table T-1

Number of Producers, Producer Milk, Component Tests and Standard Deviations: 2016

Pacific Northwest Order								
Month	No. of Producers	Producer Milk	Butterfat		Protein		Other Solids	
			Test	Standard Deviation	Test	Standard Deviation	Test	Standard Deviation
January	559	748,503,536	4.09	0.50	3.30	0.24	5.73	0.09
February	558	716,451,251	4.01	0.46	3.24	0.23	5.73	0.08
March	448	598,677,671	3.93	0.43	3.19	0.21	5.74	0.08
April	451	580,732,044	3.86	0.41	3.16	0.20	5.75	0.08
May	553	773,553,894	3.89	0.44	3.20	0.22	5.74	0.08
June	550	746,574,282	3.88	0.44	3.18	0.22	5.74	0.08
July	550	771,833,799	3.87	0.42	3.17	0.22	5.75	0.08
August	444	588,358,953	3.82	0.38	3.13	0.20	5.73	0.08
September	452	608,025,546	3.90	0.41	3.21	0.21	5.71	0.09
October	452	614,411,929	4.01	0.43	3.29	0.22	5.74	0.09
November	444	556,002,710	4.07	0.45	3.27	0.22	5.72	0.09
December	446	579,693,263	4.15	0.48	3.34	0.23	5.73	0.10
Average/Total	492	7,882,818,878	3.95	0.45	3.22	0.23	5.73	0.09

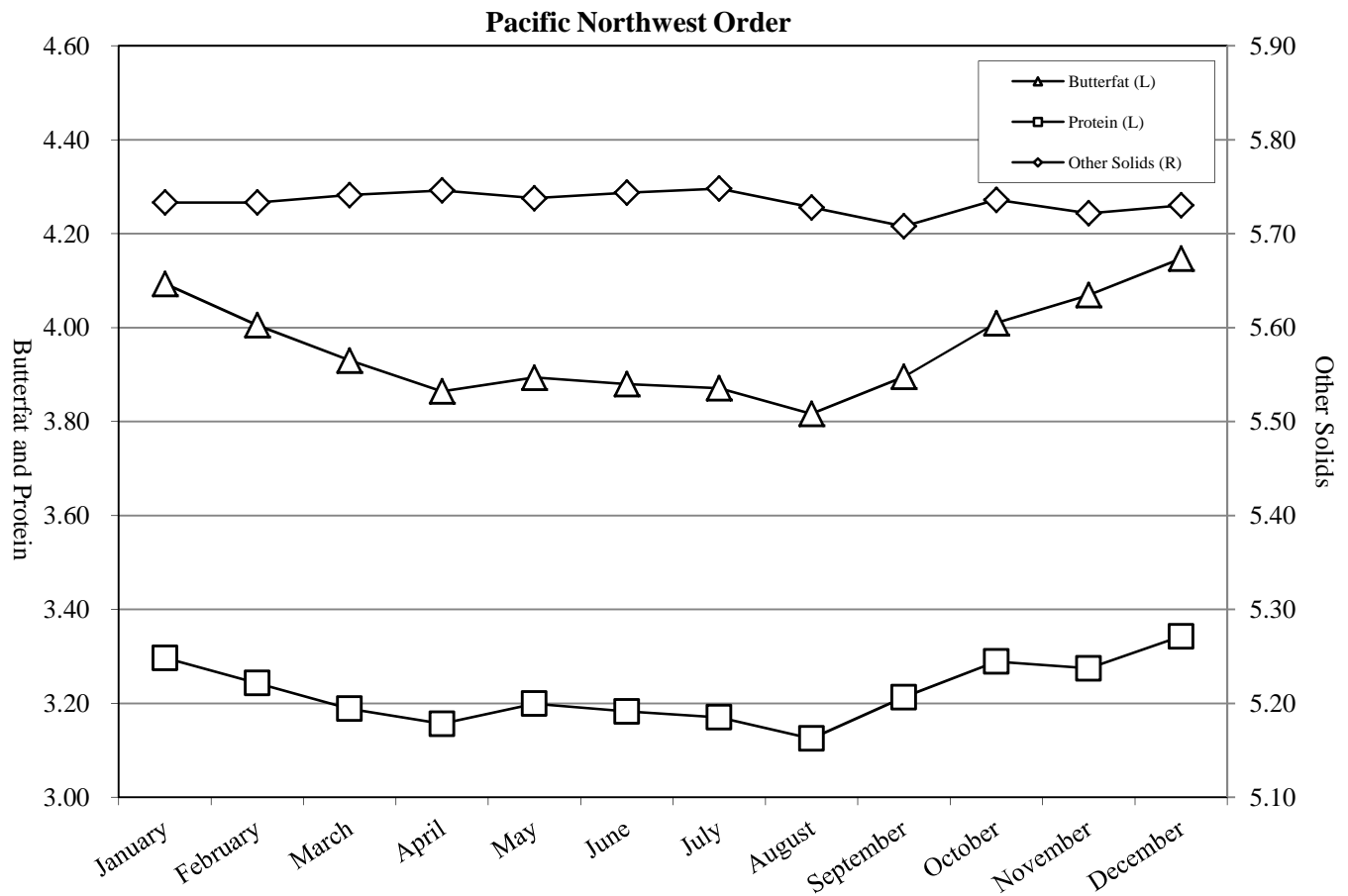


Table T-2**Number of Producers, Producer Milk and Component Tests by Region: 2016****Pacific Northwest Order**

Month	Western Washington					Eastern Washington 1/				
	No. of Producers	Producer Milk	Butterfat	Protein	OS	No. of Producers	Producer Milk	Butterfat	Protein	OS
January	235	179,959,087	4.04	3.24	5.73	128	364,574,352	4.01	3.26	5.75
February	234	172,487,133	3.98	3.19	5.73	127	347,615,426	3.92	3.20	5.74
March	232	184,678,350	3.98	3.20	5.73	118	326,235,421	3.91	3.19	5.74
April	232	178,179,122	3.96	3.18	5.73	123	318,773,890	3.81	3.15	5.75
May	232	181,900,552	3.93	3.17	5.72	126	377,643,940	3.77	3.14	5.76
June	230	174,749,274	3.93	3.16	5.72	125	367,114,958	3.76	3.12	5.76
July	231	179,631,496	3.92	3.16	5.72	125	381,946,292	3.77	3.10	5.77
August	232	174,484,517	3.93	3.16	5.70	118	333,643,053	3.77	3.10	5.74
September	233	167,145,345	4.02	3.24	5.67	124	363,363,817	3.85	3.21	5.72
October	234	170,460,451	4.10	3.31	5.70	123	363,907,015	3.98	3.29	5.75
November	233	164,904,838	4.13	3.27	5.70	118	314,719,897	4.07	3.29	5.73
December	233	172,152,373	4.18	3.33	5.72	120	327,234,675	4.16	3.37	5.73
Average/Total	233	2,100,732,538	4.01	3.22	5.71	123	4,186,772,736	3.90	3.20	5.75

Month	Western Oregon 2/					Eastern Oregon				
	No. of Producers	Producer Milk	Butterfat	Protein	OS	No. of Producers	Producer Milk	Butterfat	Protein	OS
January	185	127,591,712	4.17	3.29	5.74	11	76,378,385	4.47	3.62	5.66
February	186	123,148,317	4.09	3.24	5.75	11	73,200,375	4.34	3.57	5.68
March	93	81,600,213	3.88	3.16	5.78	5	6,163,687	3.89	3.23	5.74
April	91	77,924,782	3.85	3.14	5.77	5	5,854,250	3.87	3.24	5.75
May	184	133,603,631	4.05	3.22	5.74	11	80,405,771	4.15	3.51	5.69
June	185	126,971,770	4.02	3.21	5.74	10	77,738,280	4.10	3.47	5.70
July	184	130,804,039	3.99	3.21	5.74	10	79,451,972	4.04	3.45	5.71
August	90	75,408,688	3.75	3.11	5.73	4	4,822,695	3.68	3.27	5.74
September	91	72,951,388	3.83	3.17	5.71	4	4,564,996	3.85	3.37	5.70
October	91	75,327,094	3.92	3.23	5.74	4	4,717,369	4.07	3.48	5.73
November	89	71,770,012	3.94	3.21	5.74	4	4,607,963	4.12	3.44	5.73
December	89	75,514,210	4.01	3.27	5.74	4	4,792,005	4.12	3.40	5.75
Average/Total	130	1,172,615,856	3.98	3.21	5.74	7	422,697,748	4.19	3.51	5.69

1/ Includes: Siskiyou County, California; Franklin and Latah Counties, Idaho; Pierce and Wahkiakum Counties, Washington; and Cache County, Utah.

2/ Includes: Deschutes and Umatilla Counties, Oregon.

Table T-3a
Butterfat Tests by Region: 2016

Month	Pacific Northwest Order Butterfat			
	Western WA	Eastern WA 1/	Western OR 2/	Eastern OR
January	4.04	4.01	4.17	4.47
February	3.98	3.92	4.09	4.34
March	3.98	3.91	3.88	3.89
April	3.96	3.81	3.85	3.87
May	3.93	3.77	4.05	4.15
June	3.93	3.76	4.02	4.10
July	3.92	3.77	3.99	4.04
August	3.93	3.77	3.75	3.68
September	4.02	3.85	3.83	3.85
October	4.10	3.98	3.92	4.07
November	4.13	4.07	3.94	4.12
December	4.18	4.16	4.01	4.12
Average	4.01	3.90	3.98	4.19

1/ Includes: Siskiyou County, California; Franklin and Latah Counties, Idaho; Pierce and Wahkiakum Counties, Washington; and Cache County, Utah.

2/ Includes: Deschutes and Umatilla Counties, Oregon.

Pacific Northwest Order: Butterfat

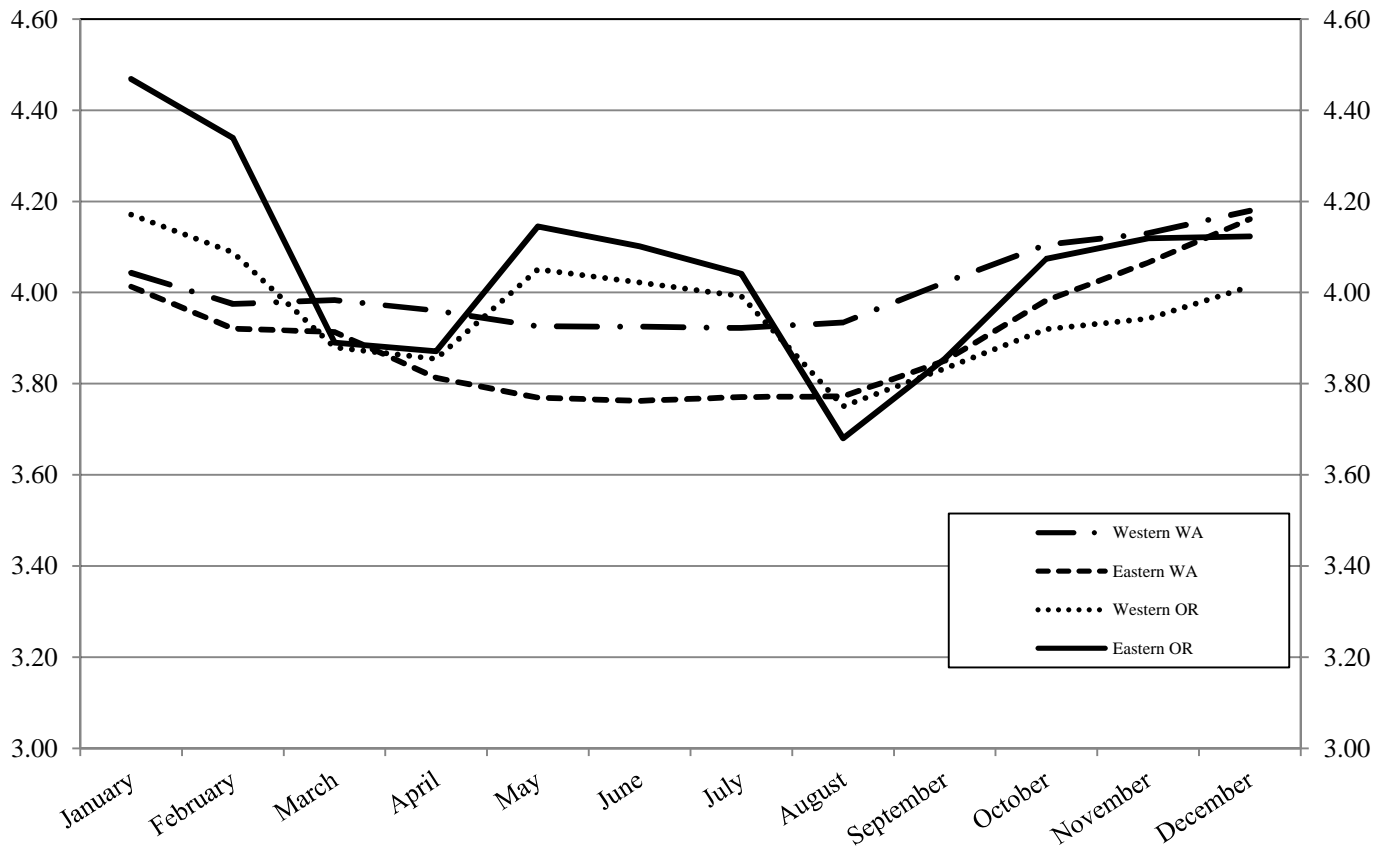


Table T-3b
Protein Tests by Region: 2016

Month	Pacific Northwest Order			
	Western WA	Eastern WA 1/	Western OR 2/	Eastern OR
January	3.24	3.26	3.29	3.62
February	3.19	3.20	3.24	3.57
March	3.20	3.19	3.16	3.23
April	3.18	3.15	3.14	3.24
May	3.17	3.14	3.22	3.51
June	3.16	3.12	3.21	3.47
July	3.16	3.10	3.21	3.45
August	3.16	3.10	3.11	3.27
September	3.24	3.21	3.17	3.37
October	3.31	3.29	3.23	3.48
November	3.27	3.29	3.21	3.44
December	3.33	3.37	3.27	3.40
Average	3.22	3.20	3.21	3.51

1/ Includes: Siskiyou County, California; Franklin and Latah Counties, Idaho; Pierce and Wahkiakum Counties, Washington; and Cache County, Utah.

2/ Includes: Deschutes and Umatilla Counties, Oregon.

Pacific Northwest Order: Protein

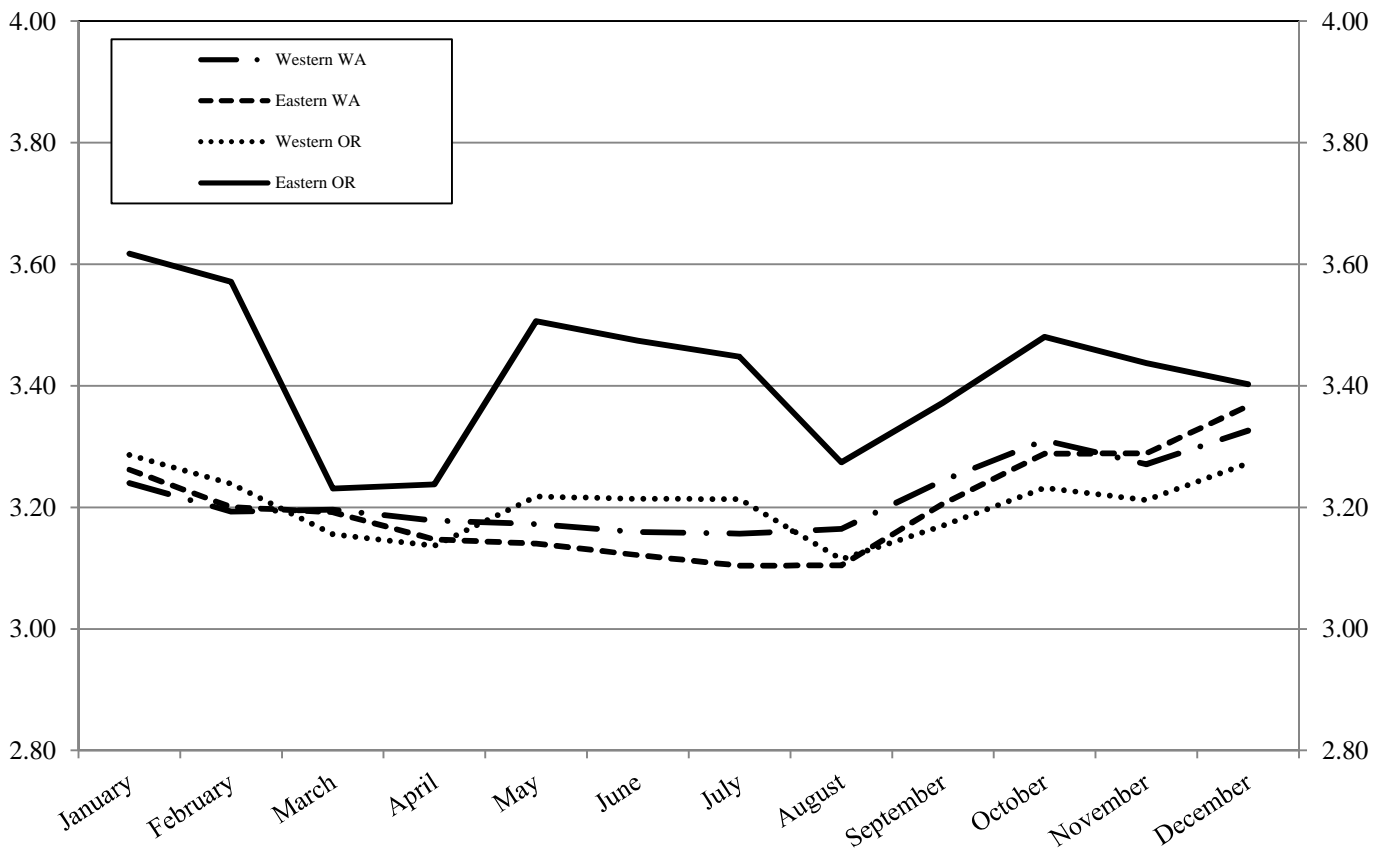


Table T-3c
Other Solids Tests by Region: 2016

Month	Pacific Northwest Order			
	Western WA	Eastern WA 1/	Western OR 2/	Eastern OR
January	5.73	5.75	5.74	5.66
February	5.73	5.74	5.75	5.68
March	5.73	5.74	5.78	5.74
April	5.73	5.75	5.77	5.75
May	5.72	5.76	5.74	5.69
June	5.72	5.76	5.74	5.70
July	5.72	5.77	5.74	5.71
August	5.70	5.74	5.73	5.74
September	5.67	5.72	5.71	5.70
October	5.70	5.75	5.74	5.73
November	5.70	5.73	5.74	5.73
December	5.72	5.73	5.74	5.75
Average	5.71	5.75	5.74	5.69

1/ Includes: Siskiyou County, California; Franklin and Latah Counties, Idaho; Pierce and Wahkiakum Counties, Washington; and Cache County, Utah.

2/ Includes: Deschutes and Umatilla Counties, Oregon.

Pacific Northwest Order: Other Solids

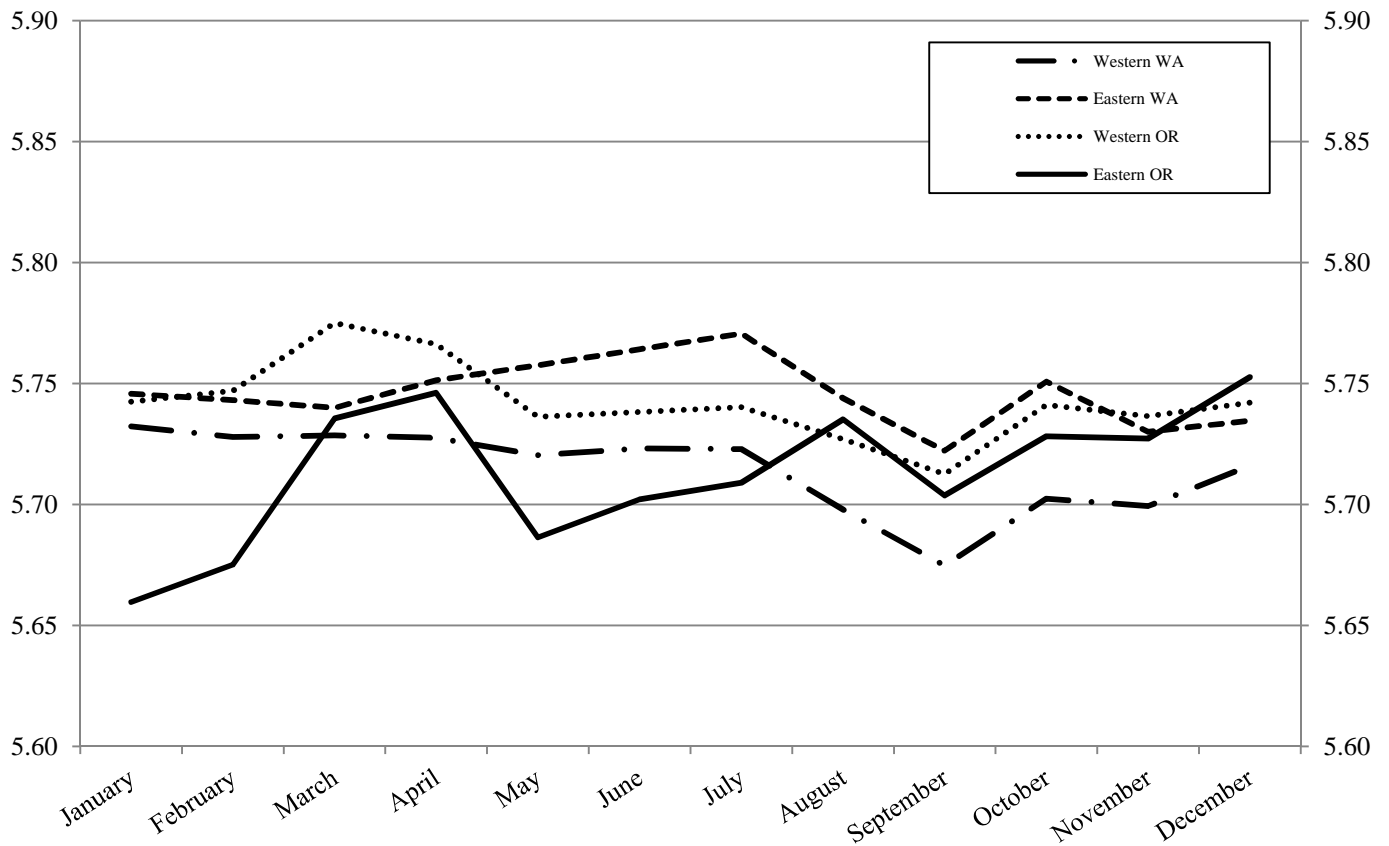
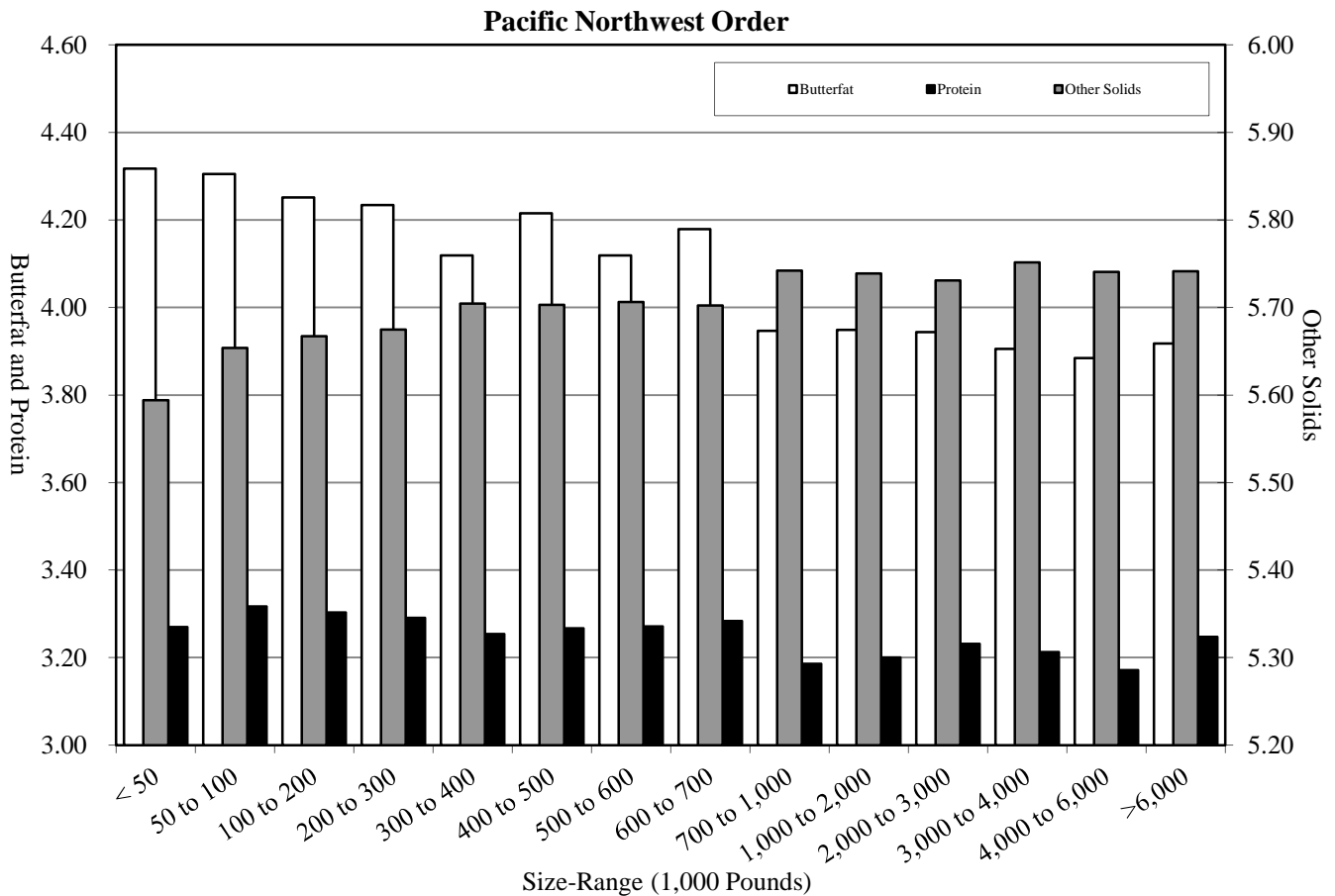


Table T-4
Component Tests by Size-Range of Producer Milk Deliveries: 2016

Size-Range (Pounds)		No. of Observations	Butterfat	Protein	Other Solids
Equal to or more than	Less than				
0	50,000	220	4.32	3.27	5.59
50,000	100,000	327	4.31	3.32	5.65
100,000	200,000	807	4.25	3.30	5.67
200,000	300,000	644	4.23	3.29	5.67
300,000	400,000	342	4.12	3.25	5.70
400,000	500,000	301	4.21	3.27	5.70
500,000	600,000	302	4.12	3.27	5.71
600,000	700,000	273	4.18	3.28	5.70
700,000	1,000,000	484	3.95	3.19	5.74
1,000,000	2,000,000	1,052	3.95	3.20	5.74
2,000,000	3,000,000	494	3.94	3.23	5.73
3,000,000	4,000,000	226	3.91	3.21	5.75
4,000,000	6,000,000	227	3.88	3.17	5.74
6,000,000		208	3.92	3.25	5.74
Total/Average		5,907	3.95	3.22	5.73



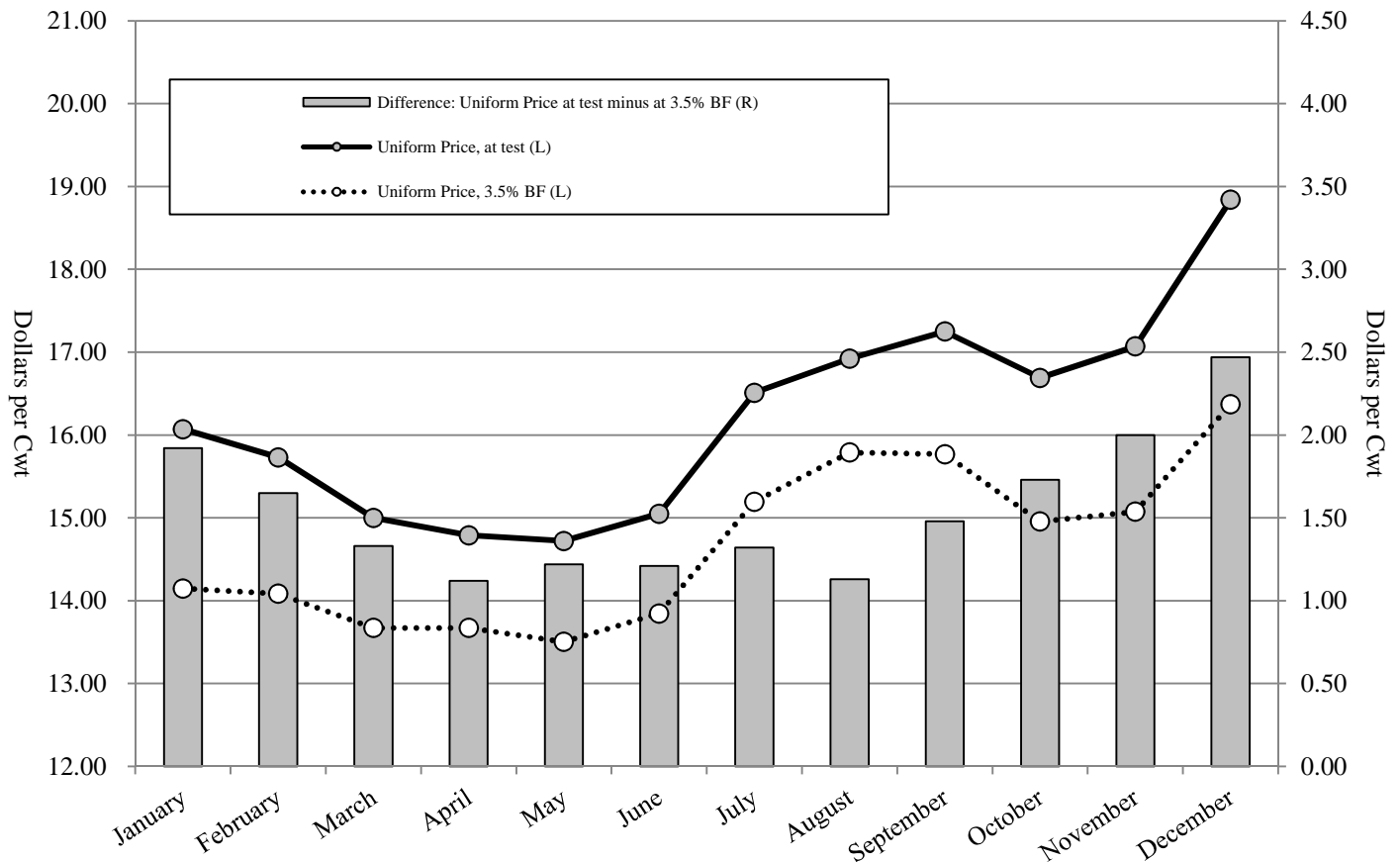
**Table T-5
 Producer Prices and Component Tests by Month: 2016**

Pacific Northwest Order

Month	A		B		Difference (B - A)	Butterfat		Protein		Other Solids		Producer Price Differential 1/ - \$ / Cwt -
	Uniform Price, 3.5% BF	Uniform Price, at test	Uniform Price, at test	Difference		- \$ / Lb -	- % -	- \$ / Lb -	- % -	- \$ / Lb -	- % -	
January	14.15	16.07	16.07	1.92	2.3062	4.09	1.8169	3.30	0.0371	5.73	0.43	
February	14.08	15.73	15.73	1.65	2.3778	4.01	1.7389	3.24	0.0492	5.73	0.28	
March	13.67	15.00	15.00	1.33	2.2028	3.93	1.9206	3.19	0.0501	5.74	(0.07)	
April	13.67	14.79	14.79	1.12	2.2376	3.86	1.8450	3.16	0.0489	5.75	0.04	
May	13.50	14.72	14.72	1.22	2.2846	3.89	1.4935	3.20	0.0529	5.74	0.74	
June	13.84	15.05	15.05	1.21	2.4109	3.88	1.4807	3.18	0.0628	5.74	0.62	
July	15.19	16.51	16.51	1.32	2.5964	3.87	1.9112	3.17	0.0774	5.75	(0.05)	
August	15.79	16.92	16.92	1.13	2.4873	3.82	2.5738	3.13	0.0881	5.73	(1.12)	
September	15.77	17.25	17.25	1.48	2.3082	3.90	2.5675	3.21	0.1096	5.71	(0.62)	
October	14.96	16.69	16.69	1.73	2.0493	4.01	2.2975	3.29	0.1351	5.74	0.14	
November	15.07	17.07	17.07	2.00	2.1044	4.07	2.8085	3.27	0.1750	5.72	(1.69)	
December	16.37	18.84	18.84	2.47	2.3354	4.15	2.6922	3.34	0.2063	5.73	(1.03)	
Average	14.62	16.15	16.15	1.53	2.3160	3.95	2.0543	3.22	0.0872	5.73	(0.13)	

1/ The producer price differentials for the Pacific Northwest Order are subject to applicable location adjustments.

Pacific Northwest Order



**Table T-6
 Producer Milk and Value by Size-Range of Producer Milk Deliveries: 2016**

Pacific Northwest Order

Size-Range		Producer Milk	Percent of Producer Milk	No. of Observations	Percent of Observations	Producer Milk Value at Test 1/	Value at Test
Equal to or more than	Less than						
- - Pounds - -		- Pounds -	- % -		- % -	- Dollars -	- \$ / Cwt -
0	50,000	7,306,665	0.1%	220	3.7%	1,249,106.68	17.10
50,000	100,000	25,051,657	0.3%	327	5.5%	4,284,494.35	17.10
100,000	200,000	118,472,898	1.5%	807	13.7%	20,169,519.48	17.02
200,000	300,000	159,427,937	2.0%	644	10.9%	27,102,066.32	17.00
300,000	400,000	116,917,929	1.5%	342	5.8%	19,281,376.67	16.49
400,000	500,000	134,097,616	1.7%	301	5.1%	22,624,642.42	16.87
500,000	600,000	167,327,545	2.1%	302	5.1%	27,700,580.28	16.55
600,000	700,000	176,568,390	2.2%	273	4.6%	29,570,262.31	16.75
700,000	1,000,000	400,547,543	5.1%	484	8.2%	64,220,528.75	16.03
1,000,000	2,000,000	1,507,128,674	19.1%	1,052	17.8%	243,437,441.18	16.15
2,000,000	3,000,000	1,182,978,053	15.0%	494	8.4%	190,938,562.98	16.14
3,000,000	4,000,000	786,286,326	10.0%	226	3.8%	126,322,791.49	16.07
4,000,000	6,000,000	1,099,025,043	13.9%	227	3.8%	174,911,775.89	15.92
6,000,000		2,001,682,602	25.4%	208	3.5%	321,505,748.94	16.06
Total/Average		7,882,818,878	100.0%	5,907	100.0%	1,273,318,897.74	16.15

1/ Based on Federal order producer minimum prices. Producer prices are subject to location adjustments.

Pacific Northwest Order

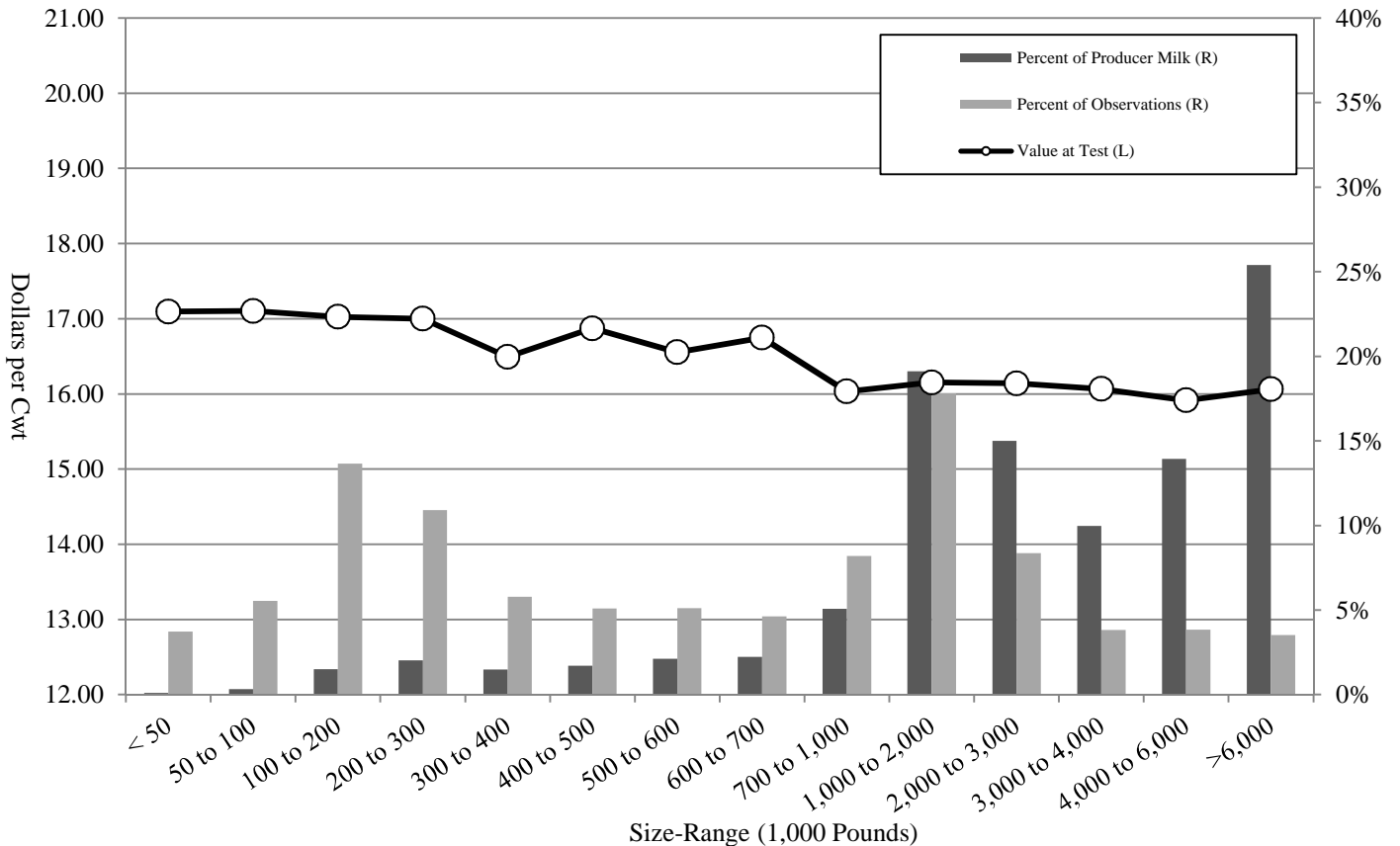


Table T-7a
Long Term Trends in Component Tests, Butterfat: 2007-2016

Pacific Northwest Order

Year	Average No. of Producers	Test	Standard Deviation	Minimum	Maximum
2007	705	3.70	0.39	2.60	5.86
2008	610	3.67	0.39	2.60	5.65
2009	624	3.71	0.41	2.62	5.83
2010	632	3.73	0.43	2.74	6.10
2011	610	3.77	0.43	2.70	6.21
2012	532	3.81	0.42	2.78	6.20
2013	568	3.88	0.44	2.84	6.07
2014	534	3.88	0.45	2.72	6.22
2015	479	3.92	0.46	2.47	6.67
2016	492	3.95	0.45	2.80	6.30
10 year Simple Average					
	579	3.80	0.43	2.69	6.11

Pacific Northwest Order: Butterfat

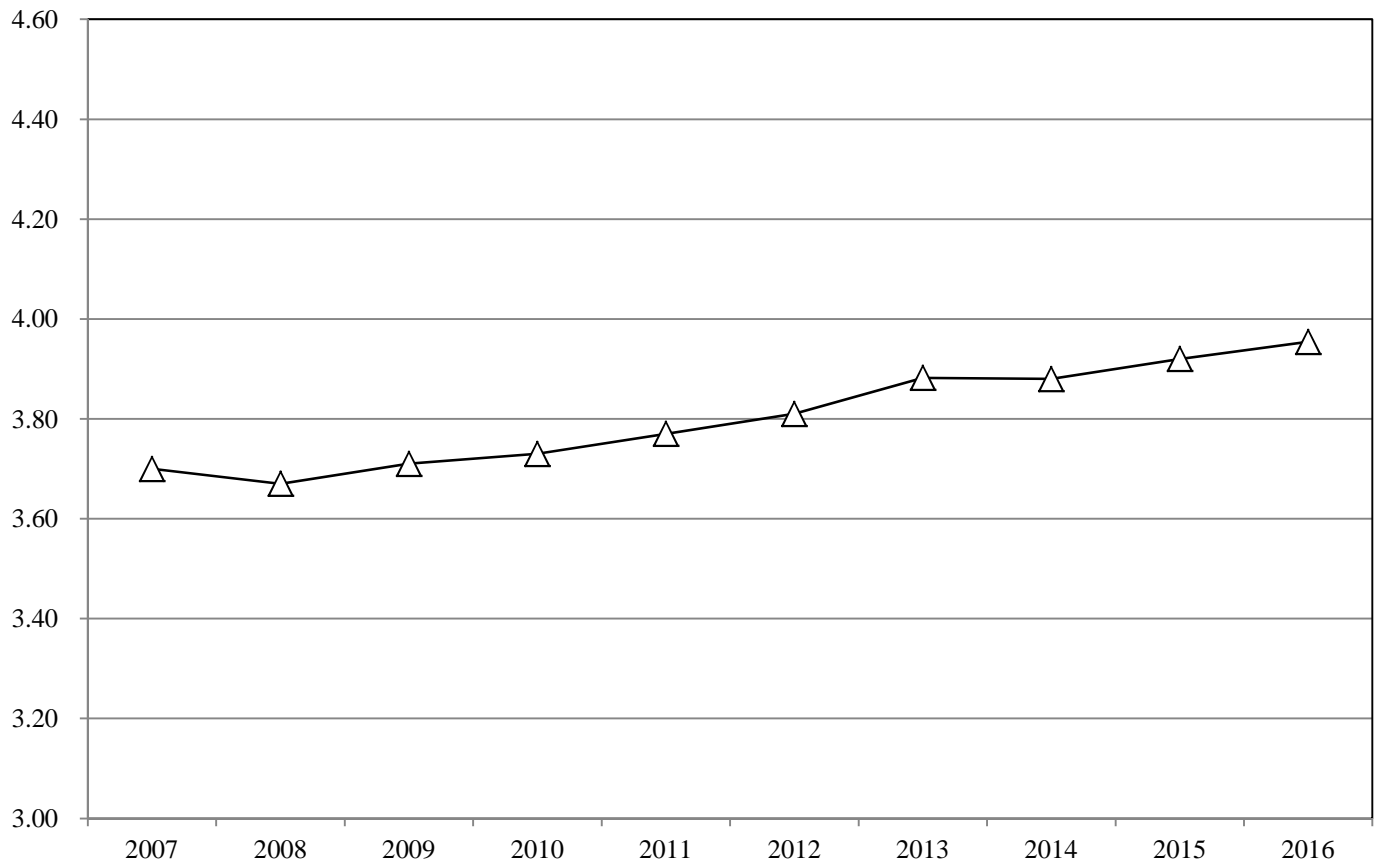


Table T-7b
Long Term Trends in Component Tests, Protein: 2007-2016

Pacific Northwest Order

Year	Average No. of Producers	Test	Standard Deviation	Minimum	Maximum
2007	705	3.09	0.21	2.17	4.42
2008	610	3.09	0.21	2.58	4.28
2009	624	3.11	0.22	2.63	4.09
2010	632	3.15	0.22	2.13	4.40
2011	610	3.17	0.22	2.58	4.43
2012	532	3.17	0.22	2.47	4.31
2013	568	3.22	0.22	2.58	4.30
2014	534	3.20	0.22	2.60	4.56
2015	479	3.20	0.23	2.58	4.34
2016	492	3.22	0.23	2.45	4.42
10 year Simple Average	579	3.16	0.22	2.48	4.36

Pacific Northwest Order: Protein

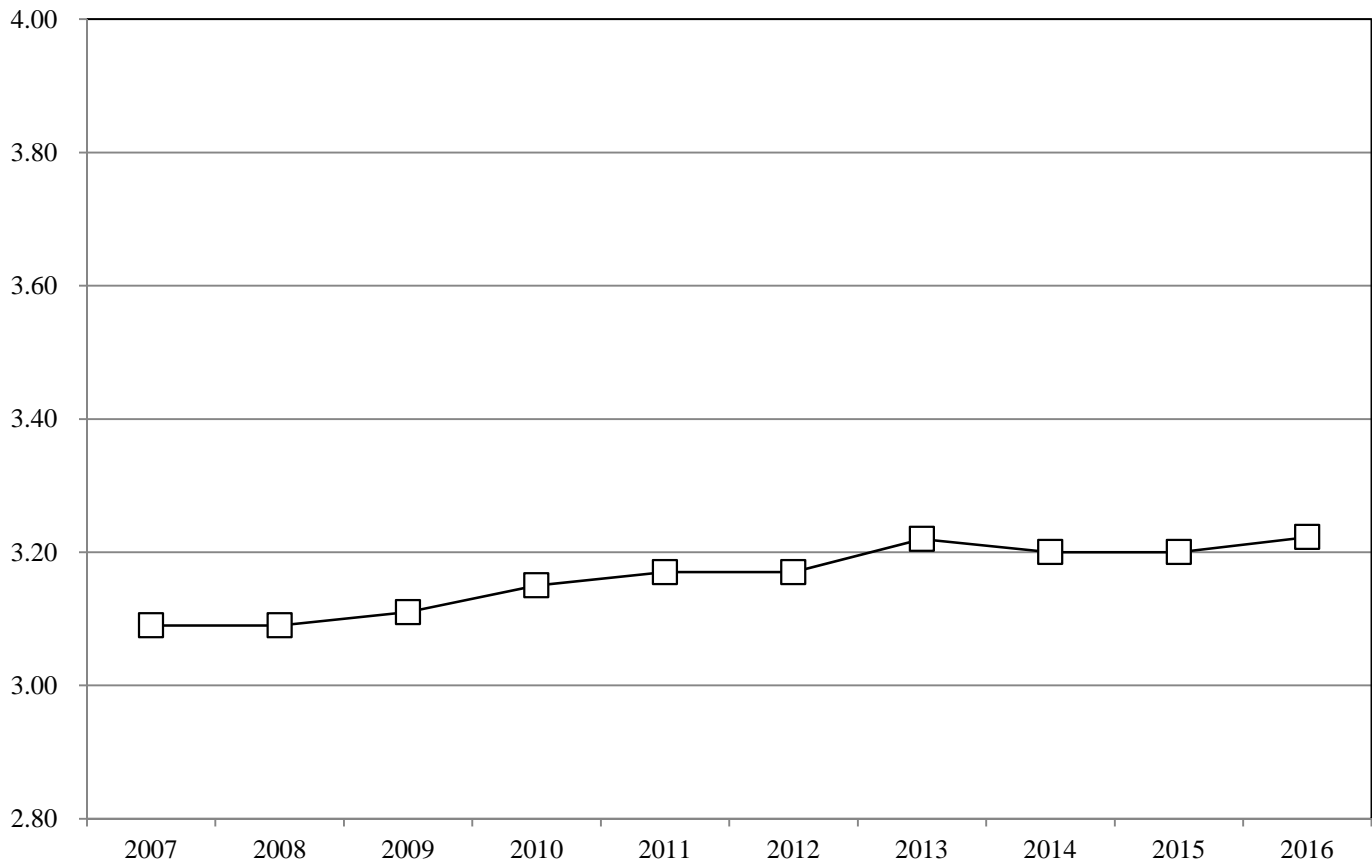


Table T-7c
Long Term Trends in Component Tests, Other Solids: 2007-2016

Pacific Northwest Order

Year	Average No. of Producers	Test	Standard Deviation	Minimum	Maximum
2007	705	5.71	0.09	4.78	5.93
2008	610	5.70	0.09	4.86	5.99
2009	624	5.69	0.09	4.96	5.87
2010	632	5.71	0.09	4.71	5.92
2011	610	5.73	0.09	4.86	6.01
2012	532	5.74	0.09	4.62	5.95
2013	568	5.73	0.08	4.67	5.97
2014	534	5.72	0.08	4.78	5.91
2015	479	5.73	0.09	5.20	5.97
2016	492	5.73	0.09	5.12	5.93
10 year Simple Average	579	5.72	0.09	4.86	5.95

Pacific Northwest Order: Other Solids

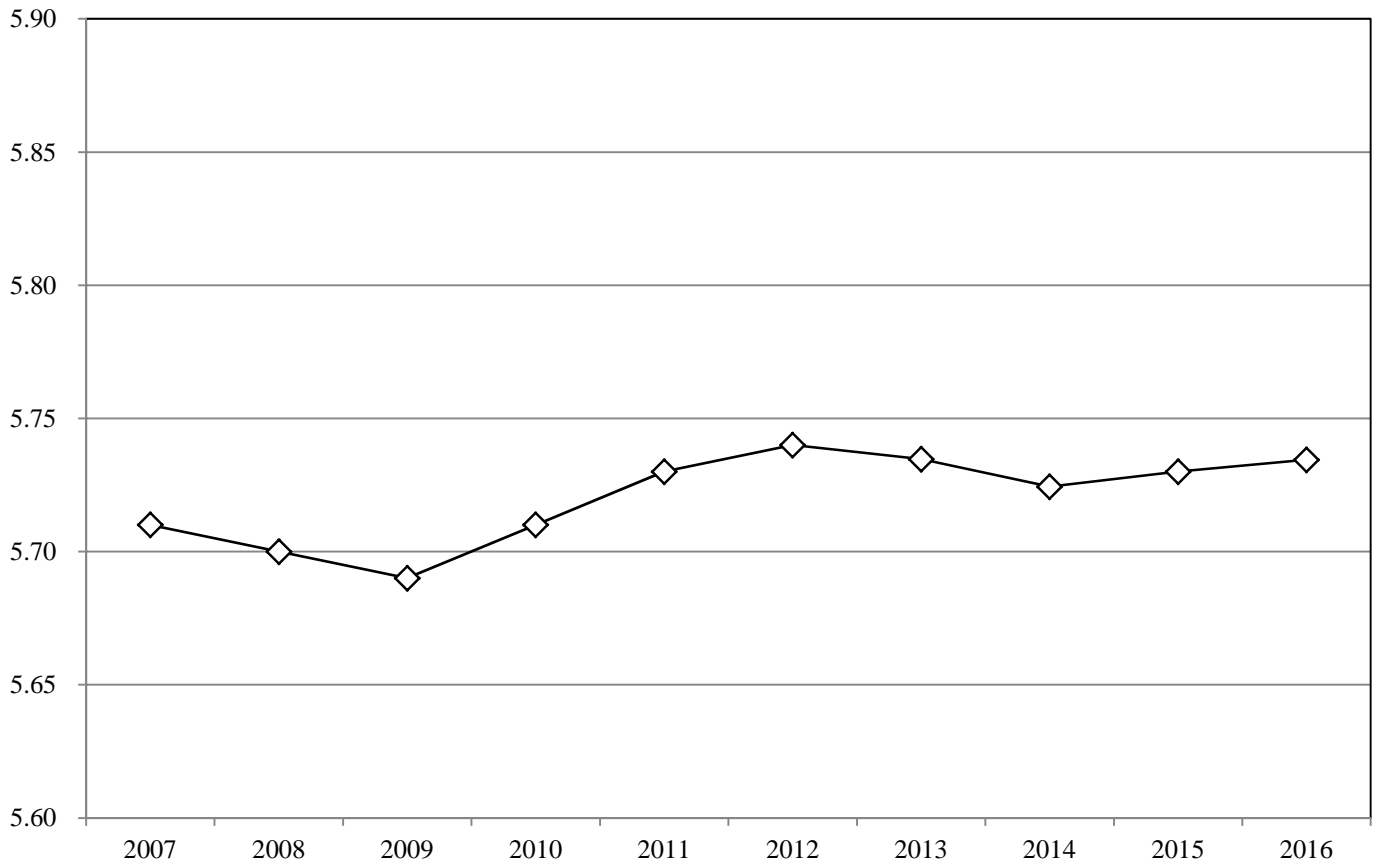


Table T-8

Number of Producers, Producer Milk, Component Tests and Standard Deviations: 2016

Arizona Order

Month	No. of Producers	Producer Milk	Butterfat	
			Test	Standard Deviation
January	95	432,409,851	3.64	0.33
February	94	433,046,696	3.50	0.32
March	93	464,007,939	3.50	0.30
April	92	445,244,577	3.50	0.28
May	91	469,150,626	3.50	0.28
June	91	434,815,433	3.50	0.29
July	90	398,835,217	3.46	0.29
August	90	362,756,325	3.45	0.29
September	89	348,089,846	3.56	0.27
October	89	404,312,873	3.61	0.29
November	88	378,083,546	3.63	0.32
December	88	408,266,643	3.69	0.33
Average/Total	91	4,979,019,572	3.54	0.31

Arizona Order

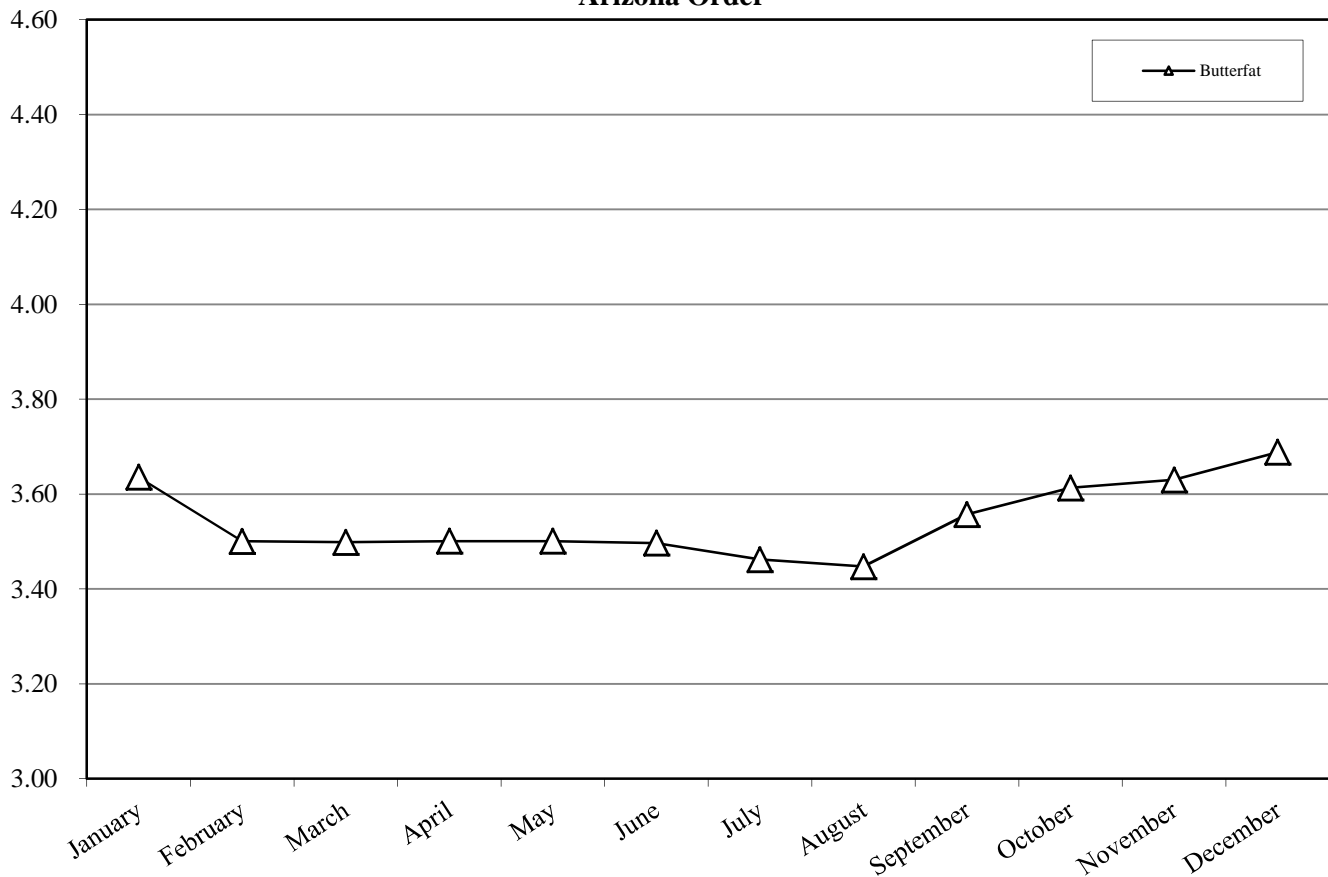


Table T-9
Component Tests by Size-Range of Producer Milk Deliveries: 2016

Size-Range (Pounds)		No. of Observations	Butterfat
Equal to or more than	Less than		
0	200,000	28	3.78
200,000	300,000	15	3.74
300,000	400,000	14	3.81
400,000	500,000	7	3.62
500,000	600,000	7	3.68
600,000	700,000	14	3.62
700,000	1,000,000	50	3.57
1,000,000	2,000,000	191	3.72
2,000,000	3,000,000	159	3.63
3,000,000	4,000,000	106	3.64
4,000,000	5,000,000	106	3.48
5,000,000	6,000,000	148	3.56
6,000,000	7,000,000	85	3.55
7,000,000		160	3.48
Total/Average		1,090	3.54

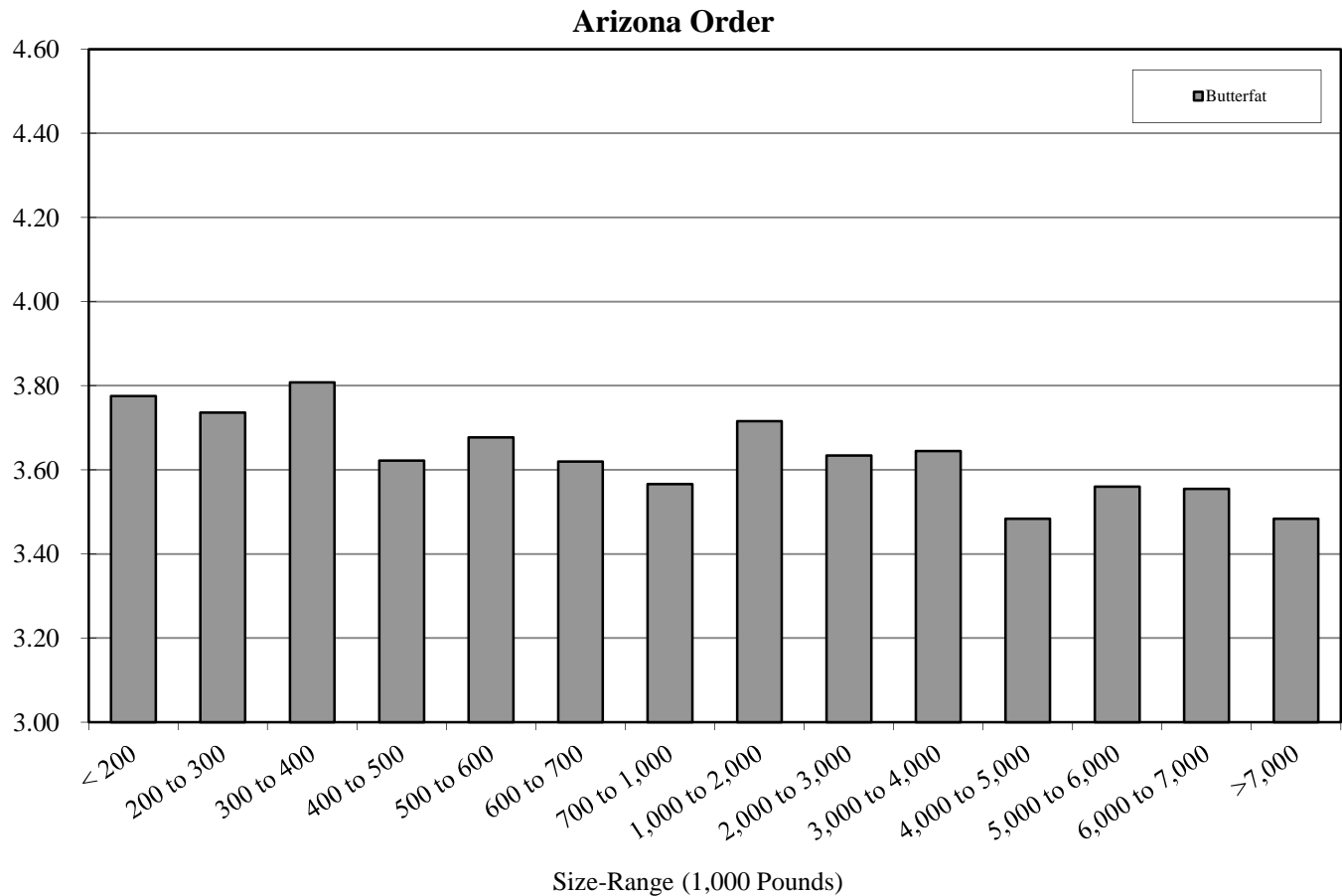


Table T-10
Producer Prices and Component Tests by Month: 2016

Arizona Order

Month	A		B		Difference			
	Uniform Price, 3.5% BF	Uniform Price, at test	(B - A)	Butterfat 1/	Skim 1/			
	- - - - \$ / Cwt - - - -			- \$ / Lb -	- % -	- \$ / Cwt -	- % -	
January	14.50	14.82	0.32	2.4098	3.64	6.29	96.36	
February	14.30	14.30	0.00	2.3681	3.50	6.23	96.50	
March	13.84	13.84	0.00	2.2389	3.50	6.22	96.50	
April	13.82	13.82	0.00	2.2390	3.50	6.20	96.50	
May	13.78	13.78	0.00	2.2820	3.50	6.00	96.50	
June	14.13	14.12	(0.01)	2.3995	3.50	5.94	96.50	
July	15.42	15.32	(0.10)	2.5688	3.46	6.66	96.54	
August	16.16	16.03	(0.13)	2.5165	3.45	7.62	96.55	
September	16.22	16.34	0.12	2.3447	3.56	8.30	96.44	
October	15.39	15.62	0.23	2.0989	3.61	8.34	96.39	
November	15.52	15.79	0.27	2.1059	3.63	8.45	96.37	
December	16.80	17.22	0.42	2.3055	3.69	9.05	96.31	
Average	14.91	15.01	0.09	2.3198	3.54	7.04	96.46	

1/ The producer prices for the Arizona Order are subject to applicable location adjustments.

Arizona Order

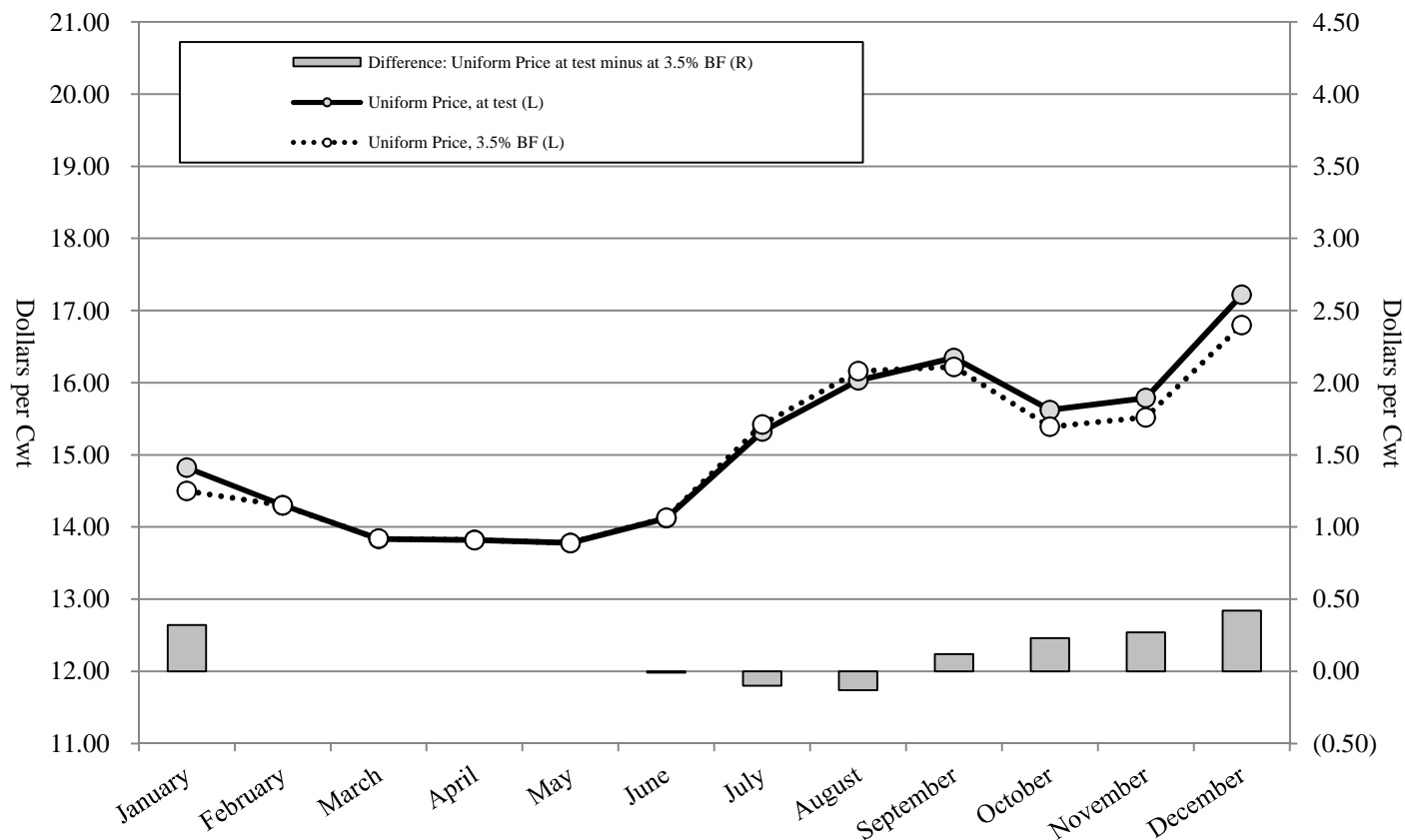


Table T-11
Producer Milk and Value by Size-Range of Producer Milk Deliveries: 2016

Arizona Order

Size-Range		Producer Milk	Percent of Producer Milk	No. of Observations	Percent of Observations	Producer Milk Value at Test 1/	Value at Test
Equal to or more than	Less than						
- - - Pounds - - -		- Pounds -	- % -		- % -	- Dollars -	- \$ / Cwt -
0	200,000	2,945,192	0.06%	28	2.57%	470,811.71	15.99
200,000	300,000	3,639,460	0.07%	15	1.38%	564,814.52	15.52
300,000	400,000	4,868,460	0.10%	14	1.28%	795,602.96	16.34
400,000	500,000	2,940,273	0.06%	7	0.64%	434,205.79	14.77
500,000	600,000	3,866,780	0.08%	7	0.64%	597,873.49	15.46
600,000	700,000	8,826,800	0.18%	14	1.28%	1,372,945.20	15.55
700,000	1,000,000	42,389,634	0.85%	50	4.59%	6,517,717.56	15.38
1,000,000	2,000,000	290,491,583	5.83%	191	17.52%	45,108,847.39	15.53
2,000,000	3,000,000	388,434,013	7.80%	159	14.59%	58,453,718.72	15.05
3,000,000	4,000,000	370,416,755	7.44%	106	9.72%	57,004,239.23	15.39
4,000,000	5,000,000	481,488,702	9.67%	106	9.72%	73,256,897.21	15.21
5,000,000	6,000,000	815,170,064	16.37%	148	13.58%	122,709,855.38	15.05
6,000,000	7,000,000	549,336,651	11.03%	85	7.80%	81,298,668.12	14.80
7,000,000		2,014,205,205	40.45%	160	14.68%	298,549,649.96	14.82
Total/Average		4,979,019,572	100.00%	1,090	100.00%	747,135,847.24	15.01

1/ Based on Federal order minimum producer prices. Producer prices are subject to location adjustments.

Arizona Order

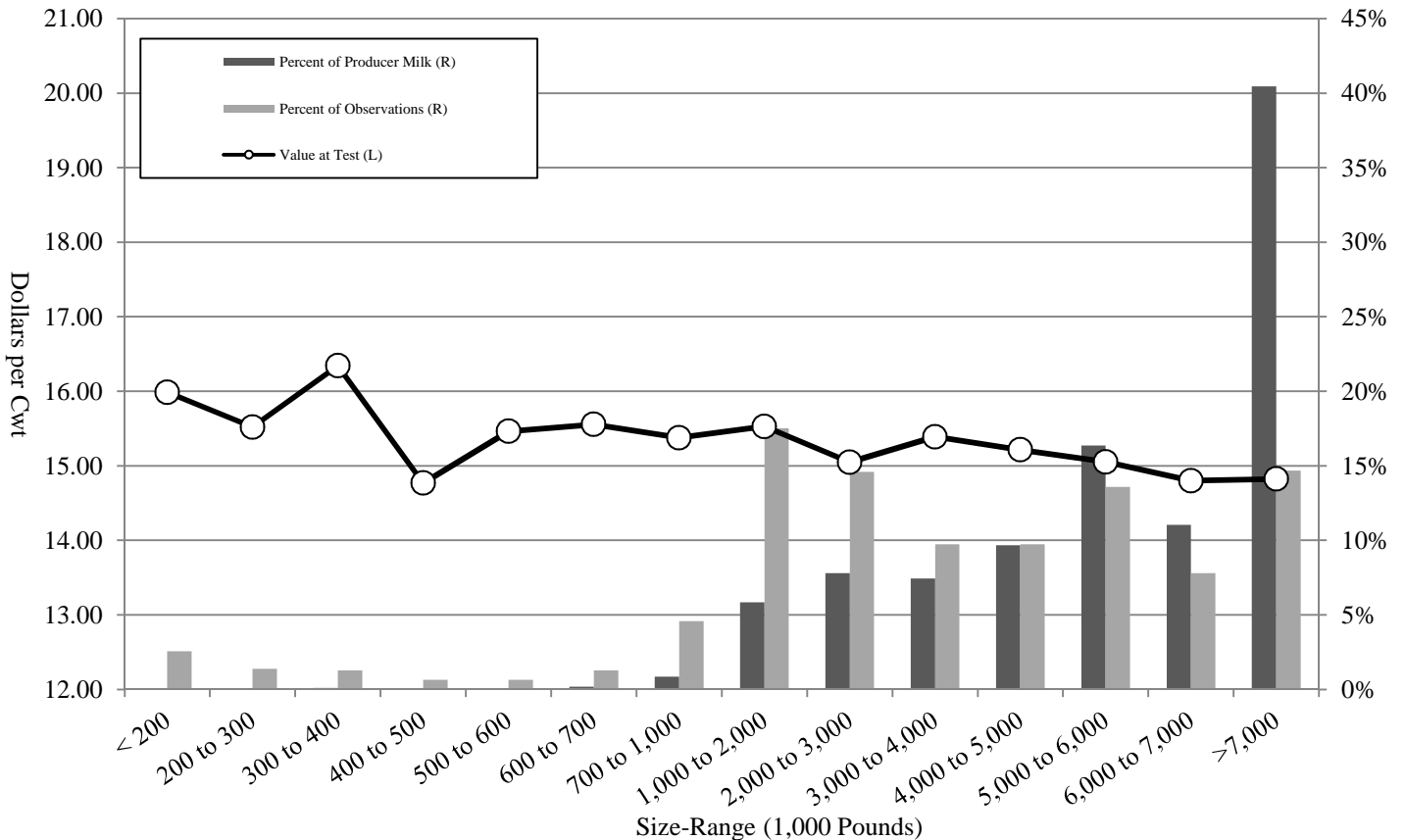


Table T-12
Long Term Trends in Component Tests, Butterfat: 2007-2016

Arizona Order

Year	Average No. of Producers	Test	Standard Deviation	Minimum	Maximum
2007	93	3.59	0.32	2.62	4.86
2008	99	3.56	0.33	2.87	5.07
2009	97	3.49	0.33	2.59	5.60
2010	96	3.50	0.36	2.36	5.45
2011	100	3.55	0.33	2.48	4.99
2012	95	3.55	0.33	2.98	5.46
2013	92	3.52	0.32	2.90	5.09
2014	92	3.47	0.31	2.91	4.94
2015	95	3.47	0.31	2.46	5.02
2016	91	3.54	0.31	2.87	5.10
10 year Simple Average	95	3.52	0.33	2.70	5.16

Arizona Order: Butterfat

