

UNITED STATES DEPARTMENT OF AGRICULTURE

Agricultural Marketing Service
Dairy Programs

FEDERAL MILK ORDERS 124 & 131

1930-220th Street SE, Ste. 102
Bothell, WA 98021
Phone: (425) 487-6009
Fax: (425) 487-2775
Email: fmmaseattle@fmmaseattle.com

4835 E. Cactus Road, Ste. 365
Scottsdale, AZ 85254
Phone: (602) 547-2909
Fax: (602) 547-2906

**OVERVIEW OF HAULING CHARGES BY
LOCATION AND SIZE-RANGE OF PRODUCTION**

PACIFIC NORTHWEST ORDER

MAY 2013 (with comparison to May of previous years)

November 2015

The U.S. Department of Agriculture (USDA) prohibits discrimination in all its programs and activities on the basis of race, color, national origin, age, disability, and where applicable, sex, marital status, familial status, parental status, religion, sexual orientation, genetic information, political beliefs, reprisal, or because all or part of an individual's income is derived from any public assistance program. (Not all prohibited bases apply to all programs.) Persons with disabilities who require alternative means for communication of program information (Braille, large print, audiotape, etc.) should contact USDA's TARGET Center at (202) 720-2600 (voice and TDD). To file a complaint of discrimination, write to USDA, Director, Office of Civil Rights, 1400 Independence Avenue, S.W., Washington, D.C. 20250-9410, or call (800) 795-3272 (voice) or (202) 720-6382 (TDD). USDA is an equal opportunity provider and employer.

**OVERVIEW OF HAULING CHARGES BY
LOCATION AND SIZE-RANGE OF PRODUCTION**

PACIFIC NORTHWEST ORDER

MAY 2013 (with comparison to May of previous years)

The following tables provide an overview of average hauling charges by State and County and size-range of production for the Pacific Northwest (FO 124) Federal Milk Marketing Order.

The data included in these tables comprises all producer milk pooled on the Pacific Northwest Order for the month of May. Hauling charges are based on producer payrolls submitted by handlers to the Market Administrator's office in Bothell, Washington. Several handlers identify a stop charge with, or in lieu of, a hauling charge. Stop charges were converted to a per hundredweight basis and added onto, if any, the normal per hundredweight charge. Note that the producer composition of each May's dataset can change from year to year.

An index of Tables can be found on page ii.

Index of Tables

	Page Number
Tables: T-1	Weighted Average Hauling Charges By State and County, Pacific Northwest Order: May 2012 and 20131
T-2	Cross Tabulation of <u>Number</u> of Producers Between Region and Hauling Charges, Pacific Northwest Order: May 20133
T-3	Cross Tabulation of <u>Percentage</u> of Producers Between Region and Hauling Charges, Pacific Northwest Order: May 20134
T-4	Cross Tabulation of <u>Number</u> of Producers Between Milk Production and Hauling Charges, Pacific Northwest Order: May 20135
T-5	Cross Tabulation of <u>Percentage</u> of Producers Between Milk Production and Hauling Charges, Pacific Northwest Order: May 20136
T-6	Average Hauling Charges and West Coast No. 2 Diesel Prices: 2008-20137

Table T-1
 Weighted Average Hauling Charges By State and County 1/
 Pacific Northwest Order
 May 2012 and 2013

State & County	2012	2013	Change
- - Cents per Cwt - -			
California			
Siskiyou	63.64	59.66	(3.98)
Weighted Average	63.64	59.66	(3.98)
Oregon			
Benton	64.42	R	
Clackamas	49.94	51.10	1.16
Clatsop	46.13	46.14	0.01
Coos	n/a	4.64	
Josephine	60.17	57.68	(2.49)
Klamath	54.85	53.11	(1.74)
Linn	70.14	82.60	12.46
Marion	53.95	52.30	(1.65)
Morrow	R	29.73	
Polk	52.37	52.13	(0.24)
Tillamook	23.10	22.93	(0.17)
Umatilla	R	69.28	
Washington	60.86	57.33	(3.53)
Restricted-OR 2/	59.94	52.94	(7.00)
Weighted Average	44.87	36.44	(8.43)
Washington			
Adams	78.46	75.48	(2.98)
Benton	70.68	67.28	(3.40)
Clark	26.99	24.58	(2.41)
Franklin	68.42	65.49	(2.93)
Grant	79.45	75.64	(3.81)
Grays Harbor	39.94	35.76	(4.18)
King	52.62	49.34	(3.28)
Klickitat	3.92	3.67	(0.25)
Lewis	59.72	59.71	(0.01)
Pacific	61.90	61.50	(0.40)
Skagit	54.62	51.16	(3.46)
Snohomish	57.21	55.04	(2.17)
Spokane	91.38	87.07	(4.31)
Stevens	103.72	95.90	(7.82)
Thurston	34.53	33.61	(0.92)
Wahkiakum	54.16	52.81	(1.35)
Whatcom	57.45	53.54	(3.91)
Yakima	72.03	68.96	(3.07)
Restricted-WA 3/	58.00	60.32	2.32
Weighted Average	66.48	63.43	(3.05)
Pacific Northwest Order	62.37	56.45	(5.92)

Table T-1
 Weighted Average Hauling Charges By State and County 1/
 Pacific Northwest Order
 May 2012 and 2013

n/a = Not applicable

R = Restricted

1/ Data obtained from producer payrolls submitted by handlers. Producers with no recorded hauling charges are excluded.

2/ Restricted - OR

State	County	2012	2013
Oregon	Benton		X
	Deschutes	X	X
	Jackson	X	X
	Lane	X	X
	Morrow	X	
	Multnomah	X	X
	Umatilla	X	
	Yamhill	X	X

3/ Restricted - WA

State	County	2012	2013
Washington	Clallam	X	X
	Cowlitz	X	X
	Island	X	X
	Jefferson	X	X
	Kittitas	X	X
	Lincoln	X	X
	Pierce	X	X
Idaho	Bonner	X	X
	Boundary	X	
	Franklin	X	
	Latah	X	X
	Lincoln	X	
Utah	Cache	X	

Table T-2
 Cross Tabulation of Number of Producers Between Region and Hauling Charges
 Pacific Northwest Order
 May 2013

		Hauling Charges (Cents per Cwt)											Weighted Average Rate	Minimum Rate	Maximum Rate	Standard Deviation
		Less than 10	10 to 20	20 to 30	30 to 40	40 to 50	50 to 60	60 to 70	70 to 80	80 to 100	Greater than 100	Total				
Region	Number of Producers															
	Western WA	15	10	6	6	38	67	47	24	24	14	251	50.89	2.51	257.79	33.50
Eastern WA 1/	3	-	-	-	-	-	49	40	24	16	132	69.71	1.97	132.51	19.65	
Western OR 2/	10	4	87	11	9	23	14	7	5	5	175	39.60	1.47	165.83	25.06	
Eastern OR	-	-	4	-	1	3	4	1	1	1	15	32.50	23.24	100.66	23.97	
Total	28	14	97	17	48	93	114	72	54	36	573	56.45	1.47	257.79	31.47	

1/ Eastern Washington includes data for Bonner and Latah Counties, Idaho.

2/ Western Oregon region includes data for Siskiyou County, California.

3

Hauling Rates by Milk Production Region
 May 2013

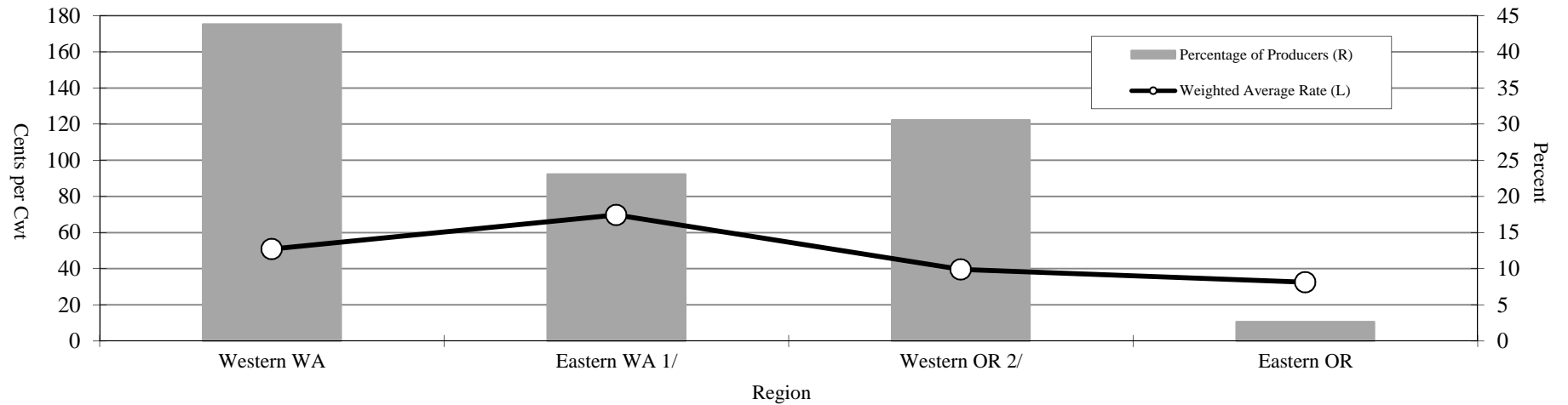


Table T-3
 Cross Tabulation of Percentage of Producers Between Region and Hauling Charges
 Pacific Northwest Order
 May 2013

		Hauling Charges (Cents per Cwt)											Weighted Average Rate	Minimum Rate	Maximum Rate	Standard Deviation
		Less than 10	10 to 20	20 to 30	30 to 40	40 to 50	50 to 60	60 to 70	70 to 80	80 to 100	Greater than 100	Total 3/				
		----- Percent of Producers -----														
Region	Western WA	2.6	1.7	1.0	1.0	6.6	11.7	8.2	4.2	4.2	2.4	43.8	50.89	2.51	257.79	33.50
	Eastern WA 1/	0.5	-	-	-	-	-	8.6	7.0	4.2	2.8	23.0	69.71	1.97	132.51	19.65
	Western OR 2/	1.7	0.7	15.2	1.9	1.6	4.0	2.4	1.2	0.9	0.9	30.5	39.60	1.47	165.83	25.06
	Eastern OR	-	-	0.7	-	0.2	0.5	0.7	0.2	0.2	0.2	2.6	32.50	23.24	100.66	23.97
Total 3/		4.9	2.4	16.9	3.0	8.4	16.2	19.9	12.6	9.4	6.3	100.0	56.45	1.47	257.79	31.47

1/ Eastern Washington includes data for Bonner and Latah Counties, Idaho.

2/ Western Oregon region includes data for Siskiyou County, California.

3/ Total may not add due to rounding.

Table T-4
 Cross Tabulation of Number of Producers Between Milk Production and Hauling Charges
 Pacific Northwest Order
 May 2013

		Hauling Charges (Cents per Cwt)											Total	Weighted Average Rate	Minimum Rate	Maximum Rate	Standard Deviation
		Less than 10	10 to 20	20 to 30	30 to 40	40 to 50	50 to 60	60 to 70	70 to 80	80 to 100	Greater than 100						
		Number of Producers															
Milk Production (1,000 pounds)	Less than 50	-	-	-	4	1	-	-	-	-	8	13	114.21	32.74	257.79	86.90	
	50 to 100	-	2	11	1	-	2	-	1	7	14	38	72.34	18.72	132.11	41.81	
	100 to 200	-	12	23	1	2	1	2	21	20	5	87	54.82	10.60	108.34	31.45	
	200 to 300	14	-	9	3	1	-	16	2	11	-	56	47.03	6.39	95.15	31.35	
	300 to 400	5	-	6	2	3	5	18	2	3	-	44	49.97	4.57	95.56	23.78	
	400 to 500	1	-	9	1	-	6	4	5	1	-	27	47.81	3.67	86.71	23.12	
	500 to 600	1	-	8	-	-	13	4	4	-	-	30	49.44	7.35	79.10	19.50	
	600 to 700	1	-	6	-	3	11	4	3	-	-	28	49.77	2.72	77.97	18.62	
	700 to 1,000	3	-	8	2	6	18	11	4	3	1	56	51.21	1.97	105.40	21.50	
	1,000 to 3,000	3	-	12	3	28	34	23	22	7	8	140	59.11	1.47	132.51	21.95	
	More than 3,000	-	-	5	-	4	3	32	8	2	-	54	56.74	20.81	99.28	15.55	
Total		28	14	97	17	48	93	114	72	54	36	573	56.45	1.47	257.79	31.47	

Hauling Rates by Milk Production Range
 May 2013

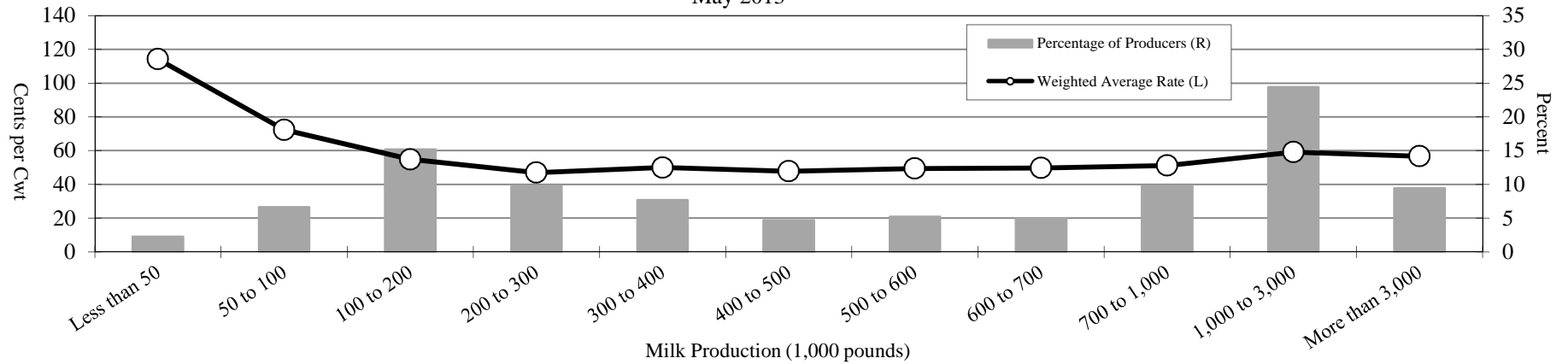


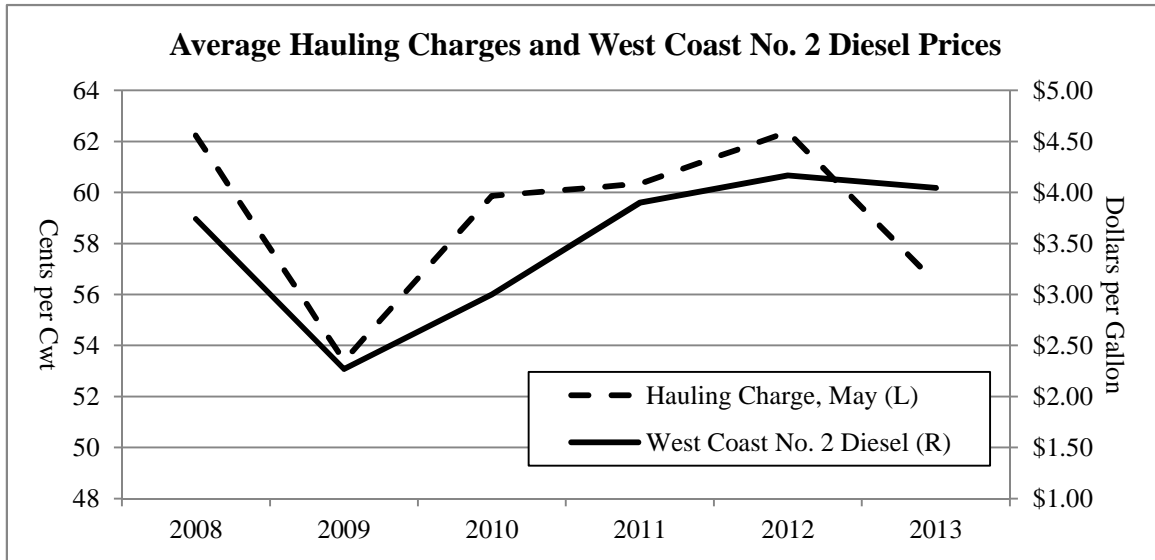
Table T-5
 Cross Tabulation of Percentage of Producers Between Milk Production and Hauling Charges
 Pacific Northwest Order
 May 2013

		Hauling Charges (Cents per Cwt)											Weighted Average Rate	Minimum Rate	Maximum Rate	Standard Deviation
		Less than 10	10 to 20	20 to 30	30 to 40	40 to 50	50 to 60	60 to 70	70 to 80	80 to 100	Greater than 100	Total 1/				
		----- Percent of Producers -----														
Milk Production (1,000 pounds)	Less than 50	-	-	-	0.7	0.2	-	-	-	-	1.4	2.3	114.21	32.74	257.79	86.90
	50 to 100	-	0.3	1.9	0.2	-	0.3	-	0.2	1.2	2.4	6.6	72.34	18.72	132.11	41.81
	100 to 200	-	2.1	4.0	0.2	0.3	0.2	0.3	3.7	3.5	0.9	15.2	54.82	10.60	108.34	31.45
	200 to 300	2.4	-	1.6	0.5	0.2	-	2.8	0.3	1.9	-	9.8	47.03	6.39	95.15	31.35
	300 to 400	0.9	-	1.0	0.3	0.5	0.9	3.1	0.3	0.5	-	7.7	49.97	4.57	95.56	23.78
	400 to 500	0.2	-	1.6	0.2	-	1.0	0.7	0.9	0.2	-	4.7	47.81	3.67	86.71	23.12
	500 to 600	0.2	-	1.4	-	-	2.3	0.7	0.7	-	-	5.2	49.44	7.35	79.10	19.50
	600 to 700	0.2	-	1.0	-	0.5	1.9	0.7	0.5	-	-	4.9	49.77	2.72	77.97	18.62
	700 to 1,000	0.5	-	1.4	0.3	1.0	3.1	1.9	0.7	0.5	0.2	9.8	51.21	1.97	105.40	21.50
	1,000 to 3,000	0.5	-	2.1	0.5	4.9	5.9	4.0	3.8	1.2	1.4	24.4	59.11	1.47	132.51	21.95
More than 3,000	-	-	0.9	-	0.7	0.5	5.6	1.4	0.3	-	9.4	56.74	20.81	99.28	15.55	
Total 1/		4.9	2.4	16.9	3.0	8.4	16.2	19.9	12.6	9.4	6.3	100.0	56.45	1.47	257.79	31.47

1/ Total may not add due to rounding.

Table T-6
Average Hauling Charges and West Coast No. 2 Diesel Prices: 2008-2013

Year	Hauling Charge, May - Cents per Cwt -	Average, No. 2 Diesel 1/ - Dollars per Gallon -
2008	62.24	\$3.74
2009	53.40	\$2.27
2010	59.87	\$3.00
2011	60.34	\$3.90
2012	62.37	\$4.17
2013	56.45	\$4.04



1/ January through April Average, West Coast No. 2 Diesel, Retail Prices (EMD_EPD2D_PTE_R50_DPG), <http://www.eia.gov/petroleum/gasdiesel/>. California excluded beginning 2012 (EMD_EPD2D_PTE_R5XCA_DPG).