

UNITED STATES DEPARTMENT OF AGRICULTURE

Agricultural Marketing Service
Dairy Programs

FEDERAL MILK ORDERS 124 & 131

1930-220th Street SE, Ste. 102
Bothell, WA 98021
Phone: (425) 487-6009
Fax: (425) 487-2775
Email: fmmaseattle@fmmaseattle.com

4835 E. Cactus Road, Ste. 365
Scottsdale, AZ 85254
Phone: (602) 547-2909
Fax: (602) 547-2906

**OVERVIEW OF HAULING CHARGES BY
LOCATION AND SIZE-RANGE OF PRODUCTION**

PACIFIC NORTHWEST ORDER

MAY 2015 (with comparison to May of previous years)

November 2015

The U.S. Department of Agriculture (USDA) prohibits discrimination in all its programs and activities on the basis of race, color, national origin, age, disability, and where applicable, sex, marital status, familial status, parental status, religion, sexual orientation, genetic information, political beliefs, reprisal, or because all or part of an individual's income is derived from any public assistance program. (Not all prohibited bases apply to all programs.) Persons with disabilities who require alternative means for communication of program information (Braille, large print, audiotape, etc.) should contact USDA's TARGET Center at (202) 720-2600 (voice and TDD). To file a complaint of discrimination, write to USDA, Director, Office of Civil Rights, 1400 Independence Avenue, S.W., Washington, D.C. 20250-9410, or call (800) 795-3272 (voice) or (202) 720-6382 (TDD). USDA is an equal opportunity provider and employer.

**OVERVIEW OF HAULING CHARGES BY
LOCATION AND SIZE-RANGE OF PRODUCTION**

PACIFIC NORTHWEST ORDER

MAY 2015 (with comparison to May of previous years)

The following tables provide an overview of average hauling charges by State and County and size-range of production for the Pacific Northwest (FO 124) Federal Milk Marketing Order.

The data included in these tables comprises all producer milk pooled on the Pacific Northwest Order for the month of May. Hauling charges are based on producer payrolls submitted by handlers to the Market Administrator's office in Bothell, Washington. Several handlers identify a stop charge with, or in lieu of, a hauling charge. Stop charges were converted to a per hundredweight basis and added onto, if any, the normal per hundredweight charge. Note that the producer composition of each May's dataset can change from year to year.

An index of Tables can be found on page ii.

Index of Tables

	Page Number
Tables: T-1	Weighted Average Hauling Charges By State and County, Pacific Northwest Order: May 2014 and 20151
T-2	Cross Tabulation of <u>Number</u> of Producers Between Region and Hauling Charges, Pacific Northwest Order: May 20153
T-3	Cross Tabulation of <u>Percentage</u> of Producers Between Region and Hauling Charges, Pacific Northwest Order: May 20154
T-4	Cross Tabulation of <u>Number</u> of Producers Between Milk Production and Hauling Charges, Pacific Northwest Order: May 20155
T-5	Cross Tabulation of <u>Percentage</u> of Producers Between Milk Production and Hauling Charges, Pacific Northwest Order: May 20156
T-6	Average Hauling Charges and West Coast No. 2 Diesel Prices: 2010-20157

Table T-1
 Weighted Average Hauling Charges By State and County 1/
 Pacific Northwest Order
 May 2014 and 2015

State & County	2014	2015	Change
- - Cents per Cwt - -			
California			
Siskiyou	52.73	54.60	1.87
Weighted Average	52.73	54.60	1.87
Oregon			
Benton	88.26	65.75	(22.51)
Clackamas	44.95	44.55	(0.40)
Clatsop	46.26	n/a	
Coos	3.81	3.30	(0.51)
Josephine	47.92	50.56	2.64
Klamath	45.84	48.70	2.86
Linn	78.89	72.18	(6.71)
Marion	49.83	51.53	1.70
Morrow	28.78	n/a	
Polk	54.98	54.60	(0.38)
Tillamook	22.85	n/a	
Umatilla	59.70	R	
Washington	54.80	56.56	1.76
Restricted-OR 2/	46.62	49.06	2.44
Weighted Average	35.40	49.29	13.89
Washington			
Adams	68.67	70.01	1.34
Benton	58.39	R	
Clark	23.90	23.87	(0.03)
Franklin	58.56	68.48	9.92
Grant	68.34	68.94	0.60
Grays Harbor	41.01	40.20	(0.81)
King	44.36	44.27	(0.09)
Klickitat	3.48	3.56	0.08
Lewis	58.22	59.28	1.06
Pacific	54.16	55.22	1.06
Skagit	45.52	46.89	1.37
Snohomish	47.96	48.33	0.37
Spokane	81.93	79.37	(2.56)
Stevens	91.19	88.08	(3.11)
Thurston	36.04	36.26	0.22
Wahkiakum	47.34	40.98	(6.36)
Whatcom	46.74	48.68	1.94
Yakima	62.65	64.12	1.47
Restricted-WA 3/	46.53	59.27	12.74
Weighted Average	57.20	58.65	1.45
Pacific Northwest Order	51.58	57.49	5.91

Table T-1
 Weighted Average Hauling Charges By State and County 1/
 Pacific Northwest Order
 May 2014 and 2015

n/a = Not applicable

R = Restricted

1/ Data obtained from producer payrolls submitted by handlers. Producers with no recorded hauling charges are excluded.

2/ Restricted - OR

State	County	2014	2015
Oregon	Columbia		X
	Deschutes	X	X
	Jackson	X	X
	Lane	X	X
	Multnomah	X	
	Umatilla		X
	Yamhill	X	X

3/ Restricted - WA

State	County	2014	2015
Washington	Benton		X
	Clallam	X	X
	Cowlitz	X	X
	Island	X	X
	Jefferson	X	X
	Kittitas	X	X
	Lincoln	X	X
	Pierce	X	X
	Idaho	Bonner	X
Franklin		X	
Latah		X	X
Utah	Lincoln	X	
	Cache	X	

Table T-2
 Cross Tabulation of Number of Producers Between Region and Hauling Charges
 Pacific Northwest Order
 May 2015

		Hauling Charges (Cents per Cwt.)											Weighted Average Rate	Minimum Rate	Maximum Rate	Standard Deviation
		Less than 10	10 to 20	20 to 30	30 to 40	40 to 50	50 to 60	60 to 70	70 to 80	80 to 100	Greater than 100	Total				
Region	Number of Producers															
	Western WA	16	8	2	10	73	58	30	20	15	8	240	46.88	2.44	476.43	38.39
Eastern WA 1/	3	-	-	-	-	31	39	16	14	18	121	65.39	1.90	143.23	20.73	
Western OR 2/	13	5	1	-	13	17	11	4	5	5	74	49.20	1.08	218.03	35.43	
Eastern OR	-	-	-	-	4	1	-	2	1	-	8	51.39	45.00	96.70	18.71	
Total	32	13	3	10	90	107	80	42	35	31	443	57.49	1.08	476.43	34.50	

1/ Eastern Washington region includes data for Bonner and Latah Counties, Idaho.

2/ Western Oregon region includes data for Siskiyou County, California.

3

Hauling Rates by Milk Production Region
 May 2015

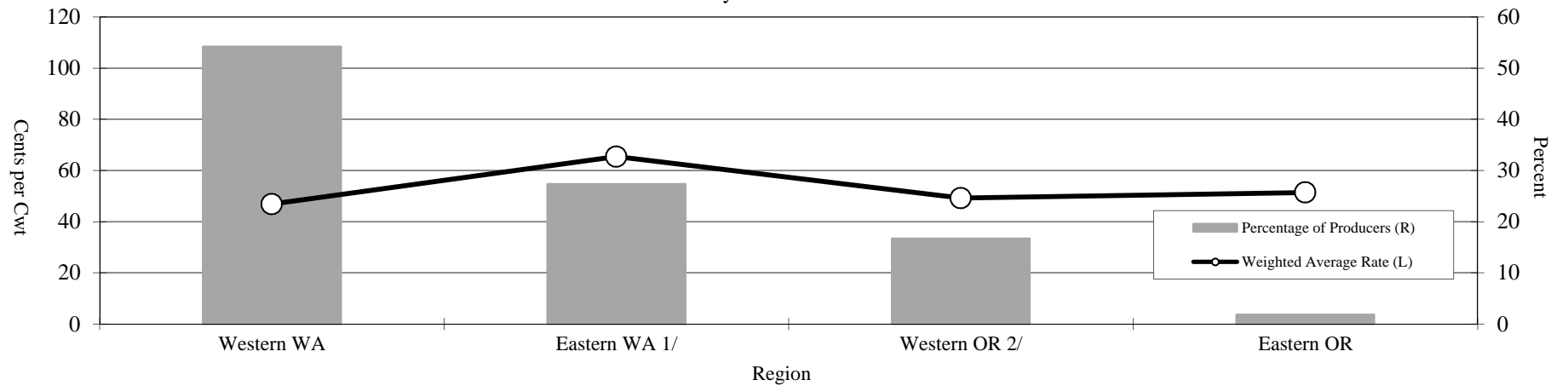


Table T-3
 Cross Tabulation of Percentage of Producers Between Region and Hauling Charges
 Pacific Northwest Order
 May 2015

		Hauling Charges (Cents per Cwt.)											Weighted Average Rate	Minimum Rate	Maximum Rate	Standard Deviation
		Less than 10	10 to 20	20 to 30	30 to 40	40 to 50	50 to 60	60 to 70	70 to 80	80 to 100	Greater than 100	Total 3/				
		----- Percent of Producers -----														
Region	Western WA	3.6	1.8	0.5	2.3	16.5	13.1	6.8	4.5	3.4	1.8	54.2	46.88	2.44	476.43	38.39
	Eastern WA 1/	0.7	-	-	-	-	7.0	8.8	3.6	3.2	4.1	27.3	65.39	1.90	143.23	20.73
	Western OR 2/	2.9	1.1	0.2	-	2.9	3.8	2.5	0.9	1.1	1.1	16.7	49.20	1.08	218.03	35.43
	Eastern OR	-	-	-	-	0.9	0.2	-	0.5	0.2	-	1.8	51.39	45.00	96.70	18.71
	Total 3/	7.2	2.9	0.7	2.3	20.3	24.2	18.1	9.5	7.9	7.0	100.0	57.49	1.08	476.43	34.50

1/ Eastern Washington region includes data for Bonner and Latah Counties, Idaho.

2/ Western Oregon region includes data for Siskiyou County, California.

3/ Total may not add due to rounding.

Table T-4
 Cross Tabulation of Number of Producers Between Milk Production and Hauling Charges
 Pacific Northwest Order
 May 2015

		Hauling Charges (Cents per Cwt.)											Total	Weighted Average Rate	Minimum Rate	Maximum Rate	Standard Deviation
		Less than 10	10 to 20	20 to 30	30 to 40	40 to 50	50 to 60	60 to 70	70 to 80	80 to 100	Greater than 100						
Milk Production (1,000 pounds)	Less than 50	-	-	-	-	2	-	-	-	-	11	13	131.64	41.36	476.43	109.44	
	50 to 100	-	1	3	1	-	-	-	1	9	4	19	75.00	18.72	117.36	34.18	
	100 to 200	1	12	-	-	-	3	14	15	13	1	59	61.21	9.42	108.39	28.63	
	200 to 300	14	-	-	-	1	12	11	3	8	-	49	49.93	6.28	95.21	29.13	
	300 to 400	5	-	-	-	1	16	-	7	-	-	29	51.44	4.92	77.85	23.16	
	400 to 500	2	-	-	-	-	9	-	2	3	-	16	55.22	3.72	80.56	22.58	
	500 to 600	1	-	-	-	2	8	6	1	-	-	18	54.79	3.25	72.05	14.91	
	600 to 700	1	-	-	-	16	2	7	-	-	1	27	51.77	2.89	101.41	15.17	
	700 to 1,000	6	-	-	2	15	11	6	3	1	1	45	48.38	1.87	107.74	22.72	
	1,000 to 3,000	2	-	-	6	48	20	25	10	-	12	123	57.67	1.08	118.54	19.83	
	More than 3,000	-	-	-	1	5	26	11	-	1	1	45	59.47	31.53	101.23	11.94	
	Total	32	13	3	10	90	107	80	42	35	31	443	57.49	1.08	476.43	34.50	

Hauling Rates by Milk Production Range
 May 2015

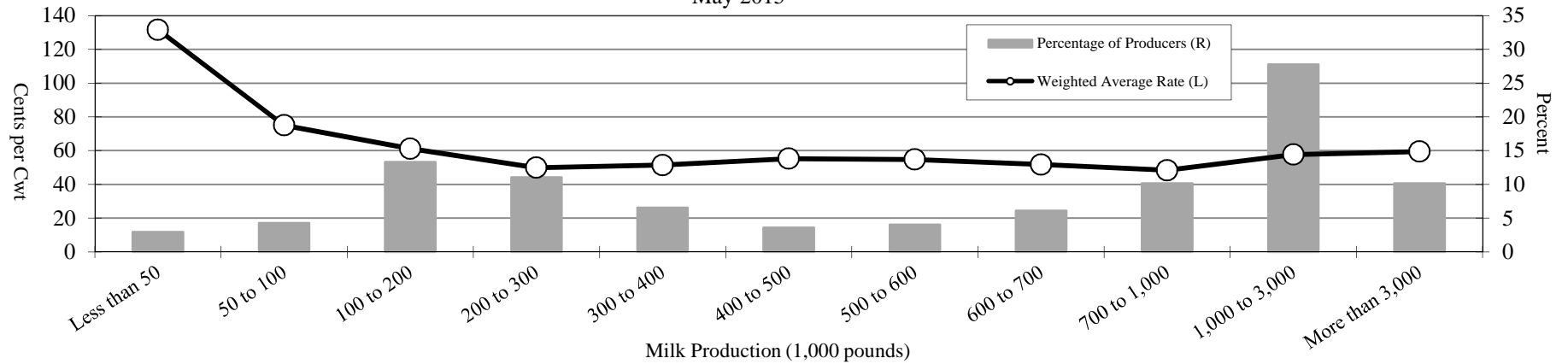


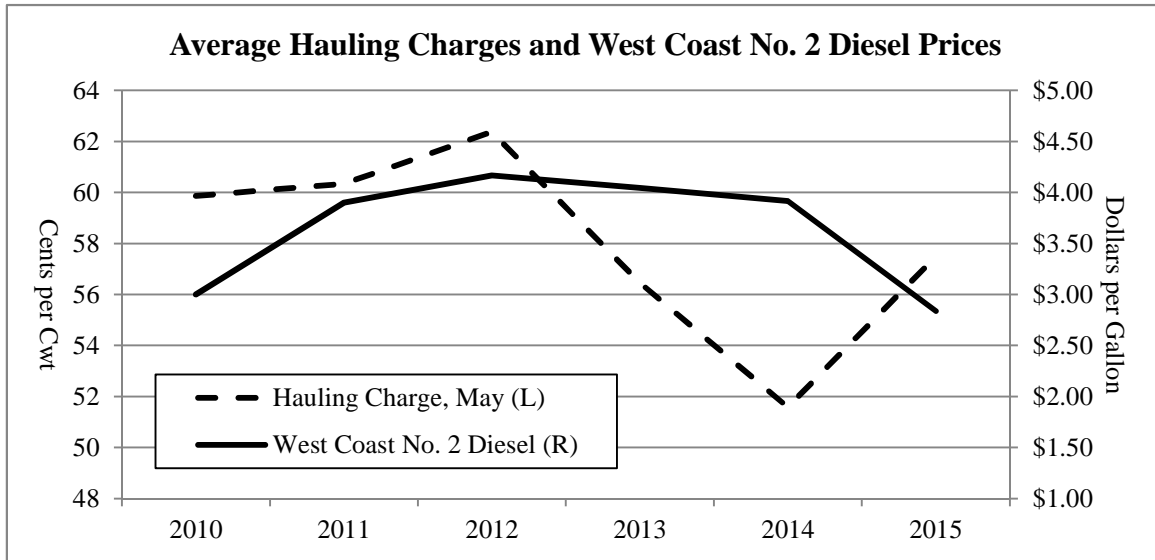
Table T-5
 Cross Tabulation of Percentage of Producers Between Milk Production and Hauling Charges
 Pacific Northwest Order
 May 2015

		Hauling Charges (Cents per Cwt.)											Weighted Average Rate	Minimum Rate	Maximum Rate	Standard Deviation
		Less than 10	10 to 20	20 to 30	30 to 40	40 to 50	50 to 60	60 to 70	70 to 80	80 to 100	Greater than 100	Total 1/				
		----- Percent of Producers -----														
Milk Production (1,000 pounds)	Less than 50	-	-	-	-	0.5	-	-	-	-	2.5	2.9	131.64	41.36	476.43	109.44
	50 to 100	-	0.2	0.7	0.2	-	-	-	0.2	2.0	0.9	4.3	75.00	18.72	117.36	34.18
	100 to 200	0.2	2.7	-	-	-	0.7	3.2	3.4	2.9	0.2	13.3	61.21	9.42	108.39	28.63
	200 to 300	3.2	-	-	-	0.2	2.7	2.5	0.7	1.8	-	11.1	49.93	6.28	95.21	29.13
	300 to 400	1.1	-	-	-	0.2	3.6	-	1.6	-	-	6.5	51.44	4.92	77.85	23.16
	400 to 500	0.5	-	-	-	-	2.0	-	0.5	0.7	-	3.6	55.22	3.72	80.56	22.58
	500 to 600	0.2	-	-	-	0.5	1.8	1.4	0.2	-	-	4.1	54.79	3.25	72.05	14.91
	600 to 700	0.2	-	-	-	3.6	0.5	1.6	-	-	0.2	6.1	51.77	2.89	101.41	15.17
	700 to 1,000	1.4	-	-	0.5	3.4	2.5	1.4	0.7	0.2	0.2	10.2	48.38	1.87	107.74	22.72
	1,000 to 3,000	0.5	-	-	1.4	10.8	4.5	5.6	2.3	-	2.7	27.8	57.67	1.08	118.54	19.83
More than 3,000	-	-	-	0.2	1.1	5.9	2.5	-	0.2	0.2	10.2	59.47	31.53	101.23	11.94	
Total 1/		7.2	2.9	0.7	2.3	20.3	24.2	18.1	9.5	7.9	7.0	100.0	57.49	1.08	476.43	34.50

1/ Total may not add due to rounding.

Table T-6
Average Hauling Charges and West Coast No. 2 Diesel Prices: 2010-2015

Year	Hauling Charge, May - Cents per Cwt -	Average, No. 2 Diesel 1/ - Dollars per Gallon -
2010	59.87	\$3.00
2011	60.34	\$3.90
2012	62.37	\$4.17
2013	56.45	\$4.04
2014	51.58	\$3.92
2015	57.49	\$2.84



1/ January through April Average, West Coast No. 2 Diesel, Retail Prices (EMD_EPD2D_PTE_R50_DPG), <http://www.eia.gov/petroleum/gasdiesel/>. California excluded beginning 2012 (EMD_EPD2D_PTE_R5XCA_DPG).